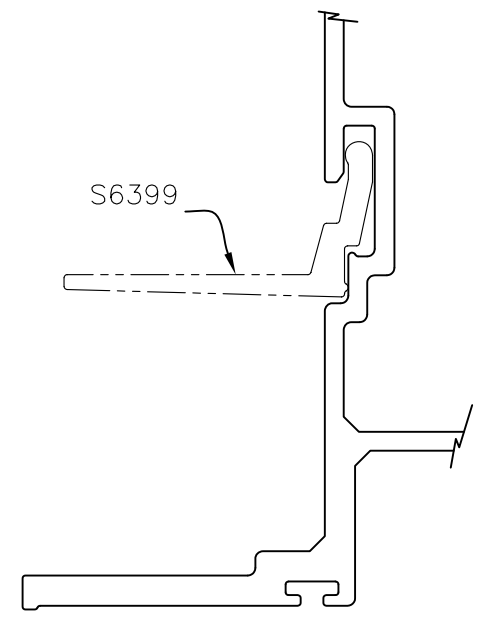
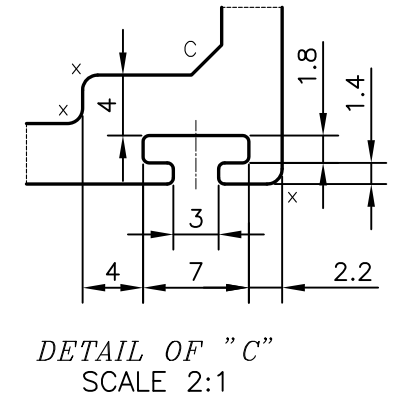
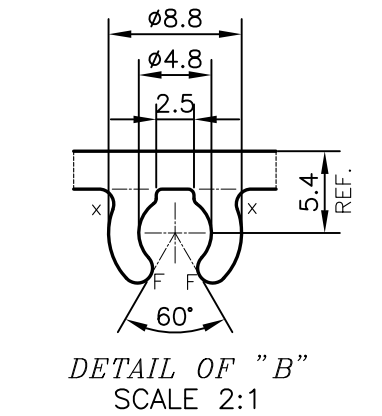
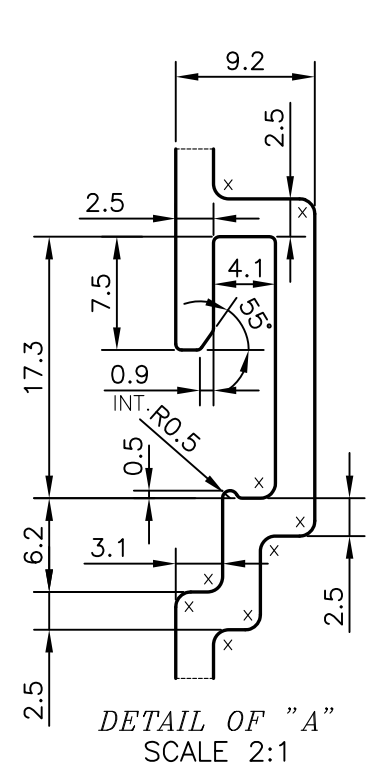
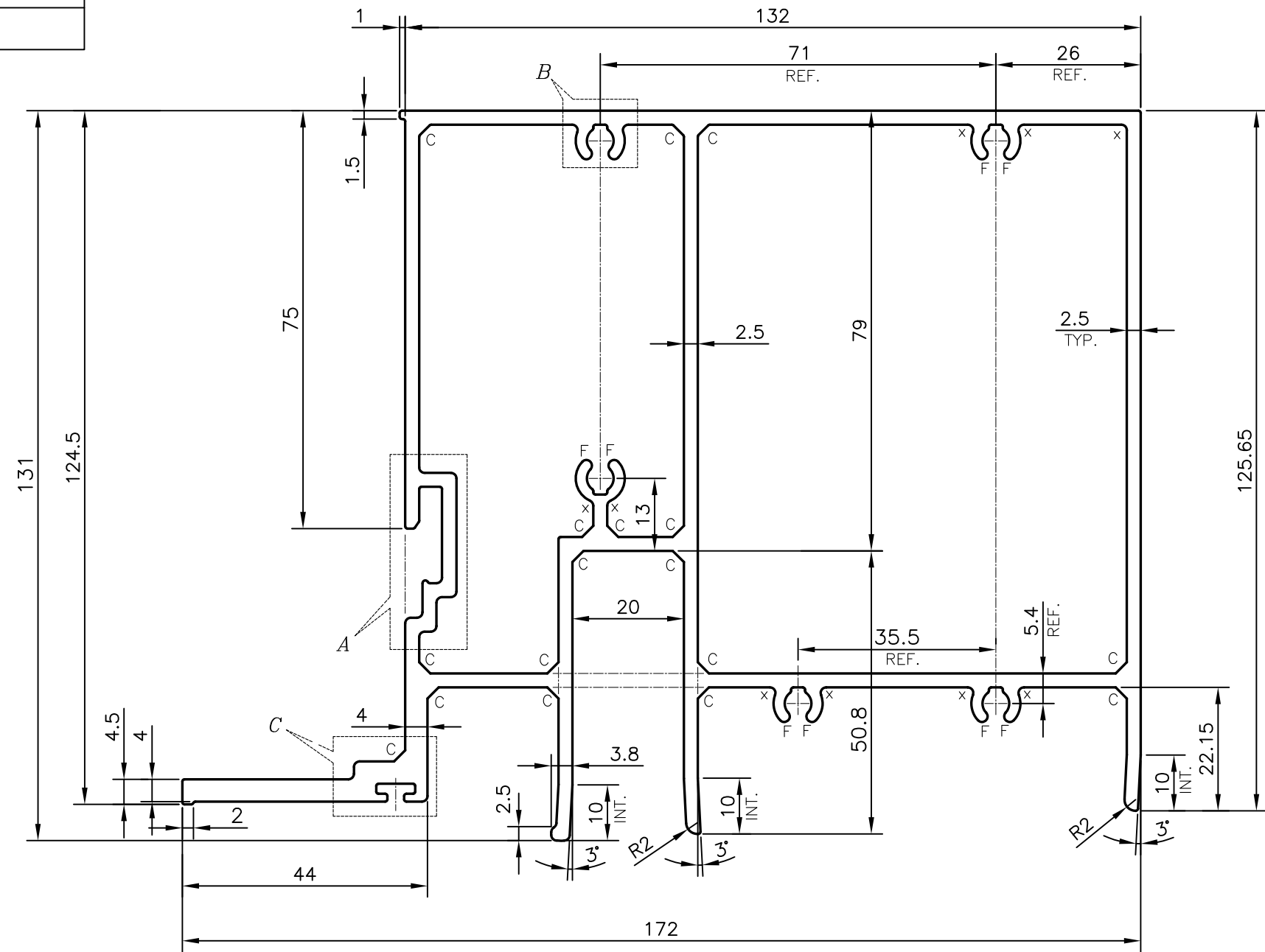


P-19759-1
S6397



TOLERANCES ON OVERALL WIDTHS & WIDTHS ACROSS FLATS OF BARS, & REGULAR SECTIONS				
UPTO 6.40mm - ±0.20	UPTO 32.0mm - ±0.38	UPTO 120.0mm - ±0.85	1. STRAIGHTNESS=1.7 mm/M 2. TWIST=1.7 mm/M 3. ANGULARITY= ±2° 4. FLATNESS =0.007xWIDTH	
UPTO 10.0mm - ±0.23	UPTO 50.0mm - ±0.46	UPTO 160.0mm - ±1.02		
UPTO 12.0mm - ±0.25	UPTO 60.0mm - ±0.53	UPTO 200.0mm - ±1.14		
UPTO 16.0mm - ±0.28	UPTO 80.0mm - ±0.69	UPTO 250.0mm - ±1.40		
UPTO 25.0mm - ±0.30	UPTO 100.0mm - ±0.75	UPTO 300.0mm - ±1.65		
 SYMBOL OF QUALITY AN ISO 9001 COMPANY	JINDAL ALUMINIUM LTD. BANGALORE-560073 (INDIA)		NAME	DATE
			DRAWN	PARVESH
		CHECKED		
		APPROVED	B.NATARAJA	07-08-2019
		SCALE	1:1	
		AREA mm ²	2153.676	
		PERIMETER mm.	866.801	
		WEIGHT kg/m	5.815	
PARTY'S NAME	ALUPLEX INDIA PVT. LTD., MUMBAI		DRAWING No.	SECTION No.
PARTY'S DRAWING No.	AS PER AUTOCAD DRAWING-AP-1936		P-19759-1	-
ALLOY & TEMPER	6063 T6		S6397	S6397
DESCRIPTION	CURTAIN WALL SECTION-AL-15			