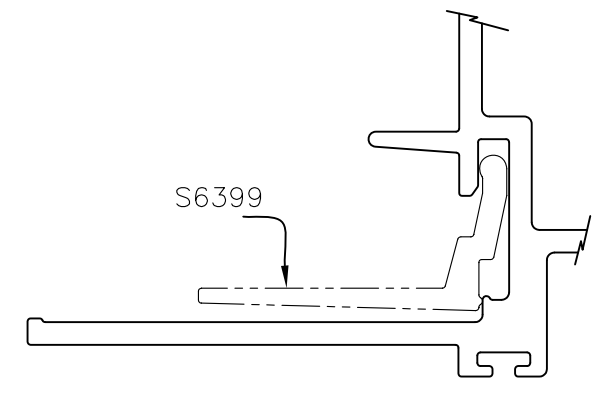
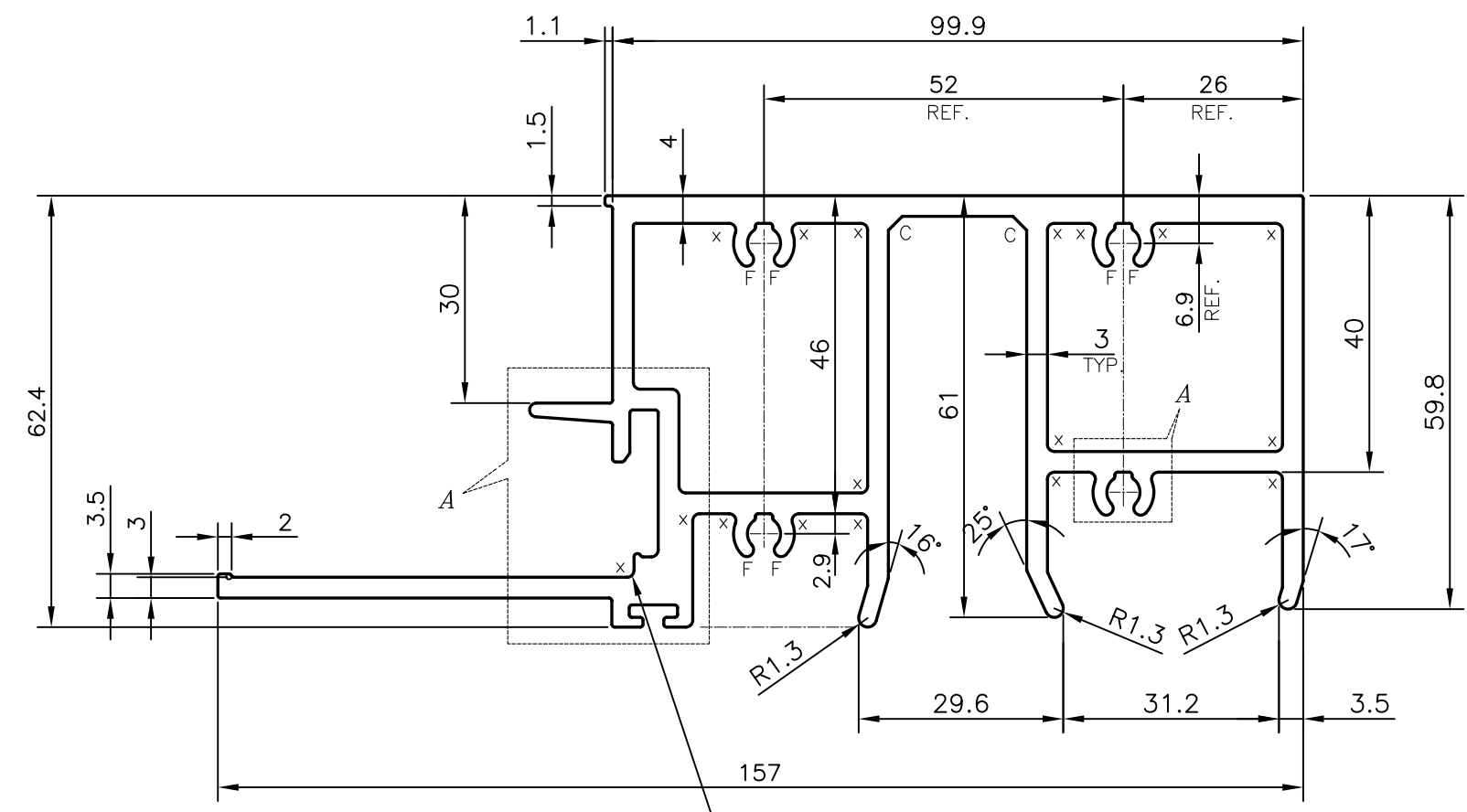
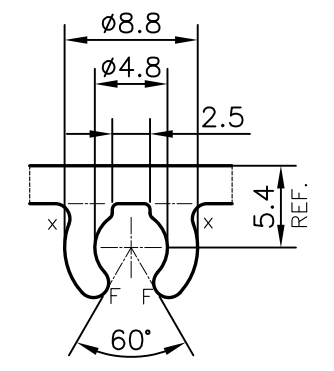
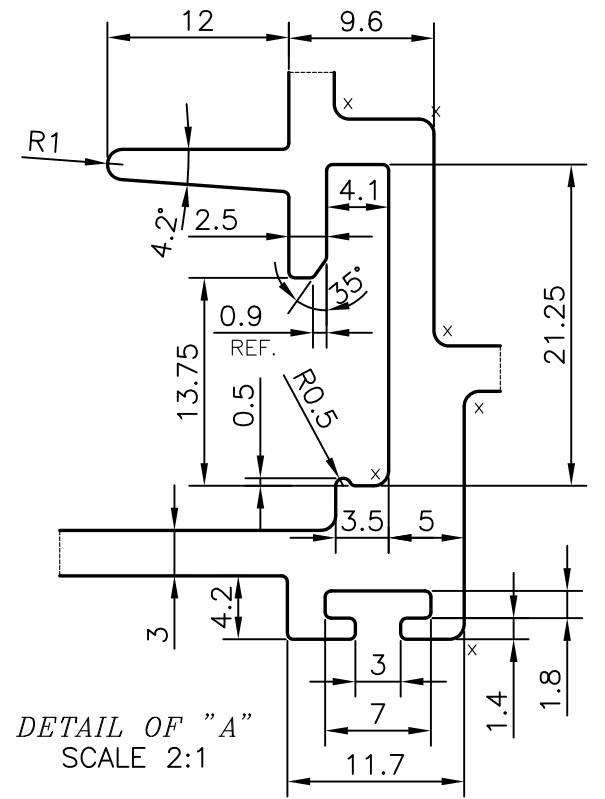


P-19760-1  
S6398



REVISED ON DATE :- 09-08-2019  
RADIUS 1 mm. INSTEAD OF CHAMFER

C = CHAMFER 2x45° (2 PLACES)  
X = RADIUS 1 mm. (17 PLACES)  
F = FULL RADIUS (8 PLACES)



DETAIL OF "B"  
SCALE 2:1

TOLERANCES ON OVERALL WIDTHS & WIDTHS ACROSS FLATS OF BARS, & REGULAR SECTIONS			
UPTO 6.40mm - ±0.20	UPTO 32.0mm - ±0.38	UPTO 120.0mm - ±0.85	1. STRAIGHTNESS=1.7 mm/M 2. TWIST=1.7 mm/M 3. ANGULARITY= ±2° 4. FLATNESS =0.007xWIDTH
UPTO 10.0mm - ±0.23	UPTO 50.0mm - ±0.46	UPTO 160.0mm - ±1.02	
UPTO 12.0mm - ±0.25	UPTO 60.0mm - ±0.53	UPTO 200.0mm - ±1.14	
UPTO 16.0mm - ±0.28	UPTO 80.0mm - ±0.69	UPTO 250.0mm - ±1.40	
UPTO 25.0mm - ±0.30	UPTO 100.0mm - ±0.75	UPTO 300.0mm - ±1.65	

JINDAL ALUMINIUM LTD.		NAME	DATE
 SYMBOL OF QUALITY AN ISO 9001 COMPANY	<b>BANGALORE-560073 (INDIA)</b>		DRAWN <i>PARVESH</i> 09-08-2019
			CHECKED
1. ALL DIMENSIONS ARE IN mm. 2. ROUND OFF ALL SHARP CORNERS WITH 0.40 mm. 3. TOLERANCES WILL BE AS PER IS:6477-1983, UNLESS OTHERWISE SPECIFIED		APPROVED <i>B.NATARAJA</i> 26-08-2019	
		SCALE	1:1
PARTY'S NAME ALUPLEX INDIA PVT. LTD., MUMBAI		AREA mm <sup>2</sup>	1677.022
		PERIMETER mm.	727.307
PARTY'S DRAWING No. AS PER AUTOCAD DRAWING-AP-1936		WEIGHT kg/m	4.528
		DRAWING No.	SECTION No.
ALLOY & TEMPER 6063 T6		P-19760-1	-
		S6398	S6398
DESCRIPTION CURTAIN WALL SECTION-AL-15			