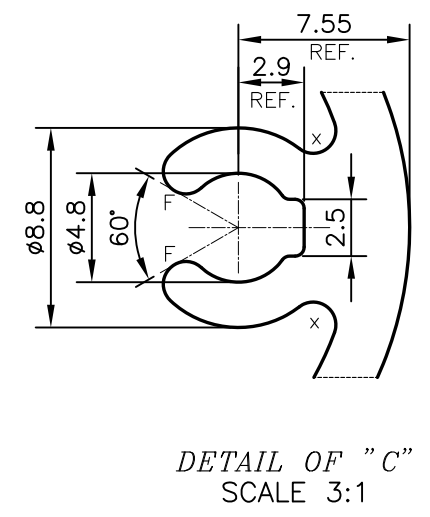
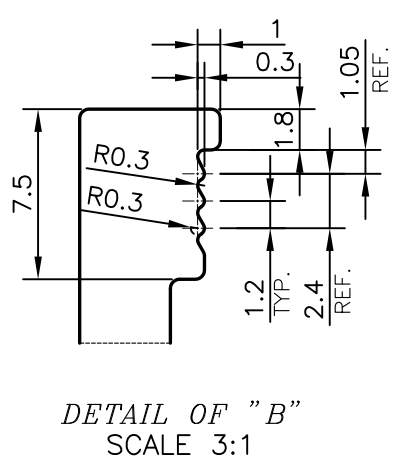
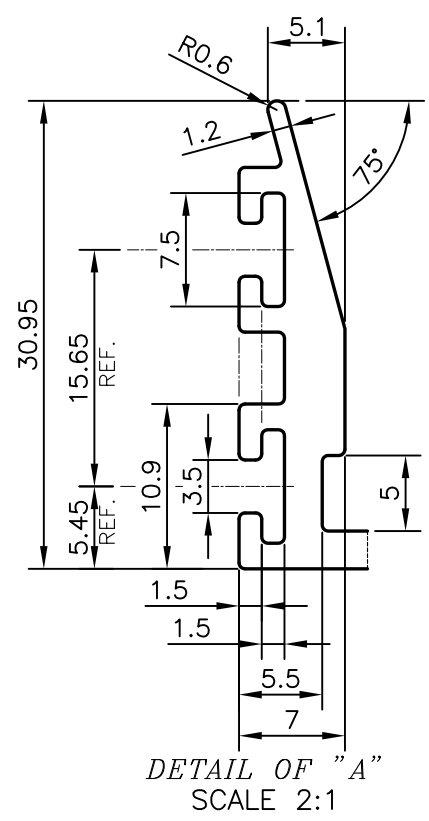
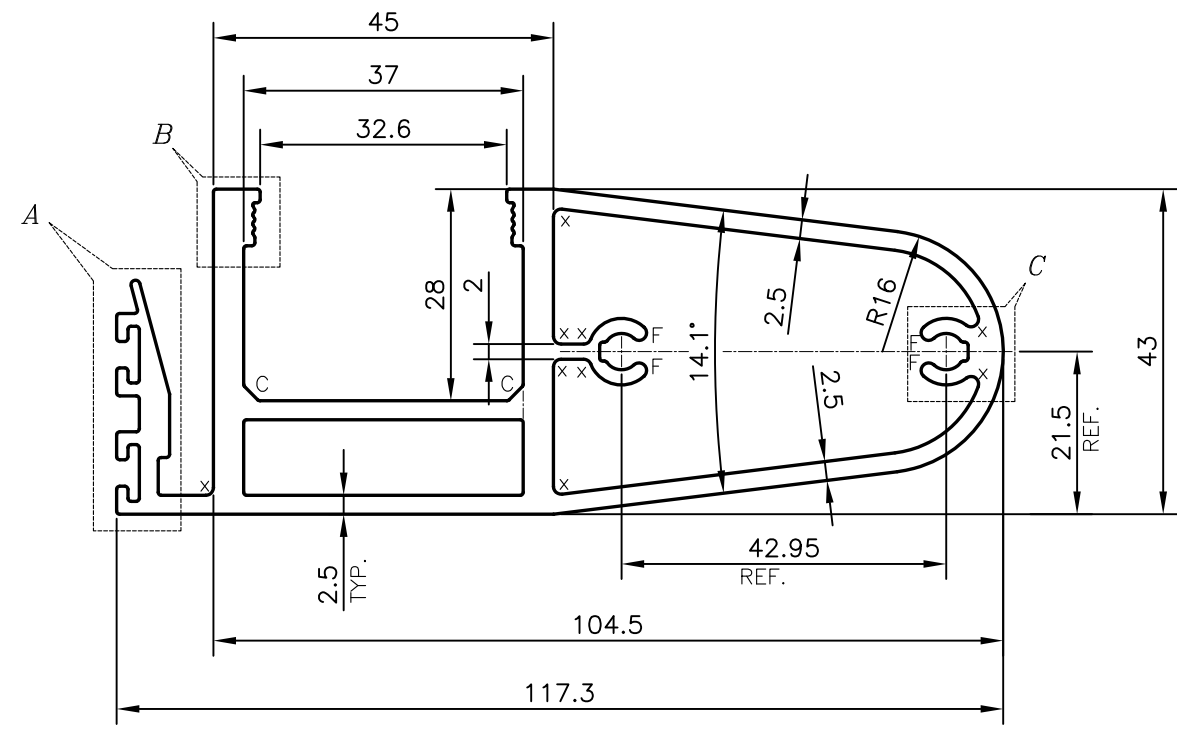


P-19881-1
S6401



C = CHAMFER 2x45° (2 PLACES)
X = RADIUS 1 mm. (9 PLACES)
F = FULL RADIUS (4 PLACES)

| TOLERANCES ON OVERALL WIDTHS & WIDTHS ACROSS FLATS OF BARS, & REGULAR SECTIONS | | | |
|--|----------------------|----------------------|---|
| UPTO 6.40mm - ±0.20 | UPTO 32.0mm - ±0.38 | UPTO 120.0mm - ±0.85 | 1. STRAIGHTNESS=1.7 mm/M 2. TWIST=1.7 mm/M 3. ANGULARITY= ±2° 4. FLATNESS =0.007xWIDTH |
| UPTO 10.0mm - ±0.23 | UPTO 50.0mm - ±0.46 | UPTO 160.0mm - ±1.02 | |
| UPTO 12.0mm - ±0.25 | UPTO 60.0mm - ±0.53 | UPTO 200.0mm - ±1.14 | |
| UPTO 16.0mm - ±0.28 | UPTO 80.0mm - ±0.69 | UPTO 250.0mm - ±1.40 | |
| UPTO 25.0mm - ±0.30 | UPTO 100.0mm - ±0.75 | UPTO 300.0mm - ±1.65 | |

| | | | |
|--|--|----------------------|-----------------------|
| <p>SYMBOL OF QUALITY AN ISO 9001 COMPANY</p> | <p>JINDAL ALUMINIUM LTD. BANGALORE-560073 (INDIA)</p> | NAME | DATE |
| | | DRAWN | PARVESH |
| | | CHECKED | |
| | | APPROVED | B.NATARAJA 07-08-2019 |
| | | SCALE | 1:1 |
| | | AREA mm ² | 1111.569 |
| | | PERIMETER mm. | 445.049 |
| | | WEIGHT kg/m | 3.001 |
| | | DRAWING No. | SECTION No. |
| | | P-19881-1 | - |
| | | S6401 | S6401 |
| PARTY'S NAME | ALUPLEX INDIA PVT. LTD., MUMBAI | | |
| PARTY'S DRAWING No. | AS PER AUTOCAD DRAWING-AP-1932 | | |
| ALLOY & TEMPER | 6063 T6 | | |
| DESCRIPTION | CURTAIN WALL SECTION-AL-09 | | |

1. ALL DIMENSIONS ARE IN mm.
2. ROUND OFF ALL SHARP CORNERS WITH 0.40 mm.
3. TOLERANCES WILL BE AS PER IS:6477-1983, UNLESS OTHERWISE SPECIFIED