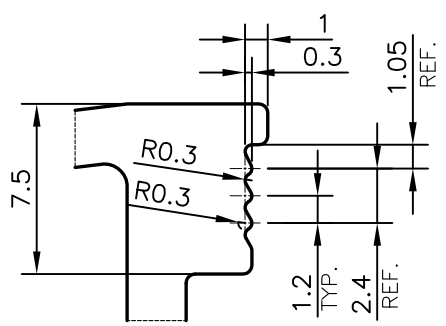
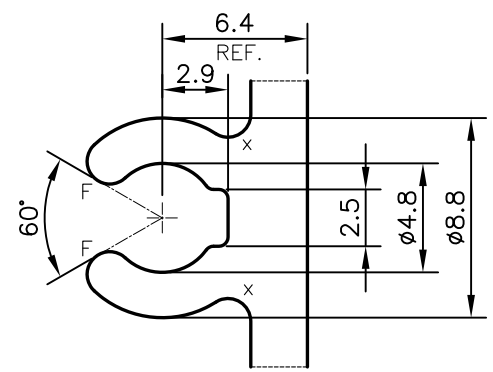


C = CHAMFER 2x45° (2 PLACES)  
X = RADIUS 1 mm. (18 PLACES)  
F = FULL RADIUS (8 PLACES)



DETAIL OF "A"  
SCALE 3:1



DETAIL OF "B"  
SCALE 3:1

TOLERANCES ON OVERALL WIDTHS & WIDTHS ACROSS FLATS OF BARS, & REGULAR SECTIONS			
UPTO 6.40mm - ±0.20	UPTO 32.0mm - ±0.38	UPTO 120.0mm - ±0.85	<b>1. STRAIGHTNESS=1.7 mm/M</b> <b>2. TWIST=1.7 mm/M</b> <b>3. ANGULARITY= ±2'</b> <b>4. FLATNESS =0.007xWIDTH</b>
UPTO 10.0mm - ±0.23	UPTO 50.0mm - ±0.46	UPTO 160.0mm - ±1.02	
UPTO 12.0mm - ±0.25	UPTO 60.0mm - ±0.53	UPTO 200.0mm - ±1.14	
UPTO 16.0mm - ±0.28	UPTO 80.0mm - ±0.69	UPTO 250.0mm - ±1.40	
UPTO 25.0mm - ±0.30	UPTO 100.0mm - ±0.75	UPTO 300.0mm - ±1.65	

<p>SYMBOL OF QUALITY AN ISO 9001 COMPANY</p>	<p><b>JINDAL ALUMINIUM LTD.</b> BANGALORE-560073 (INDIA)</p>	NAME	DATE
		DRAWN	PARVESH
		CHECKED	
		APPROVED	B.NATARAJA
			07-08-2019
		SCALE	1:1
		AREA mm <sup>2</sup>	1798.453
		PERIMETER mm.	648.468
		WEIGHT kg/m	4.856
PARTY'S NAME	ALUPLEX INDIA PVT. LTD., MUMBAI	DRAWING No.	SECTION No.
PARTY'S DRAWING No.	AS PER AUTOCAD DRAWING-AP-1934	P-19882-1	-
ALLOY & TEMPER	6063 T6	S6402	S6402
DESCRIPTION	CURTAIN WALL SECTION-AL-11		

1. ALL DIMENSIONS ARE IN mm.  
2. ROUND OFF ALL SHARP CORNERS WITH 0.40 mm.  
3. TOLERANCES WILL BE AS PER IS:6477-1983, UNLESS OTHERWISE SPECIFIED