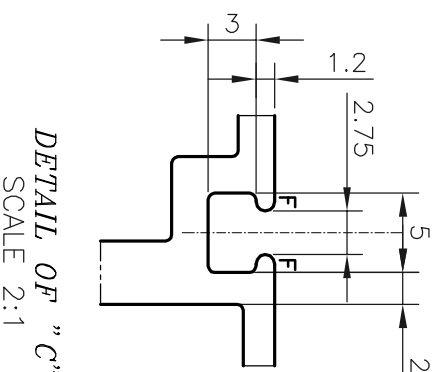
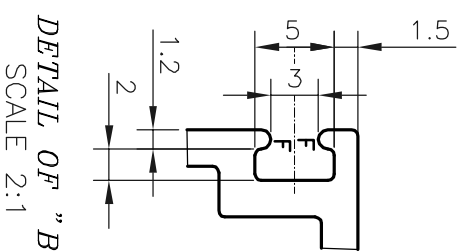
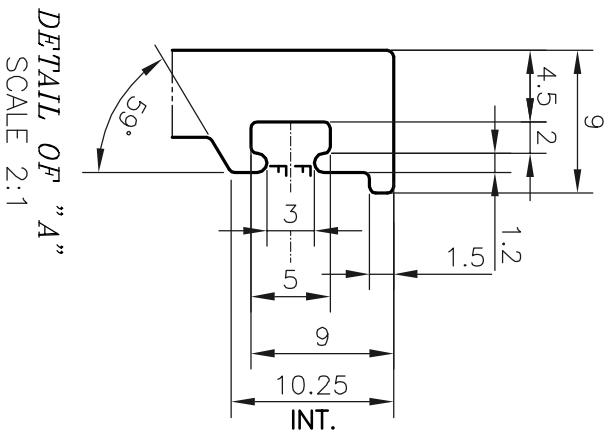


V = "V" GROOVE 0.3x90° (5 PLACES)  
 F = FULL RADIUS (7 PLACE)



TOLERANCES ON OVERALL DIMENSIONS OF HOLLOW SECTIONS

UPTO 20.0mm - ±0.30	UPTO 80.0mm - ±0.70	UPTO 180.0mm - ±1.27
UPTO 30.0mm - ±0.38	UPTO 100.0mm - ±0.80	UPTO 200.0mm - ±1.40
UPTO 40.0mm - ±0.45	UPTO 120.0mm - ±0.90	UPTO 225.0mm - ±1.52
UPTO 50.0mm - ±0.52	UPTO 140.0mm - ±1.00	
UPTO 60.0mm - ±0.60	UPTO 160.0mm - ±1.14	

1. STRAIGHTNESS=1.7mm/M
2. TWIST=1.7mm/M
3. ANGULARITY= ±1°
4. FLATNESS =0.006xWIDTH



**JINDAL ALUMINIUM LTD.**  
 BANGALORE-560073 (INDIA)

1. ALL DIMENSIONS ARE IN mm.
2. ROUND OFF ALL SHARP CORNERS WITH 0.40 mm.
3. TOLERANCES WILL BE AS PER IS:6477-1983 UNLESS OTHERWISE SPECIFIED

PARTY'S NAME		LOMA CO-DEVELOPERS 2 PRIVATE LIMITED., NAVI MUMBAI.	
PARTY'S DRAWING No.		AS PER AUTOCAD DRAWING 20010898	
ALLOY & TEMPER		6063 T6	
DESCRIPTION		CURTAIN WALL SECTION	
DRAWN	NAME	DARPAN	DATE
CHECKED			02-08-2019
APPROVED			
SCALE		1:1	
AREA mm <sup>2</sup>		1086.704	
PERIMETER mm.		637.474	
WEIGHT kg/m		2.934	
DRAWING No.		SECTION No.	
P-19907-1		-	
S6441		S6441	