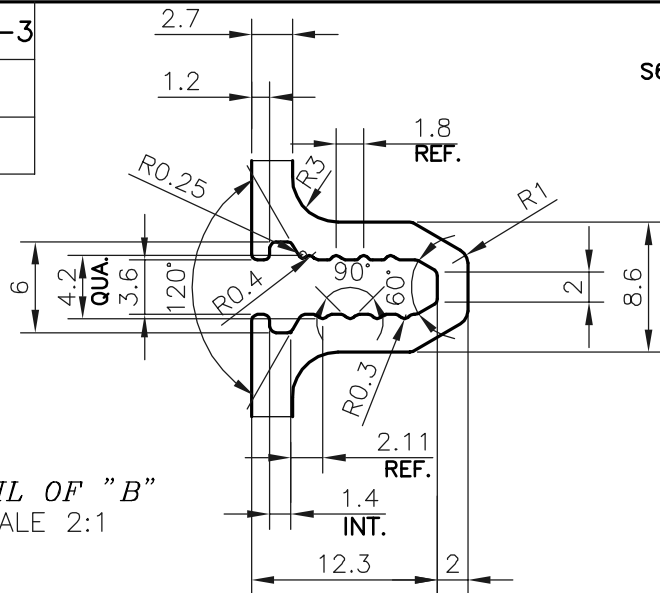
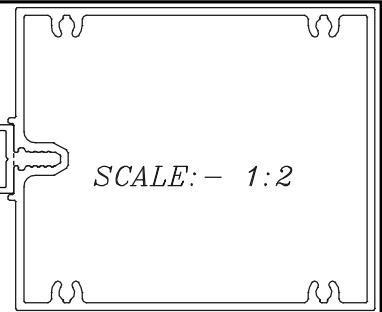


P-19920-3

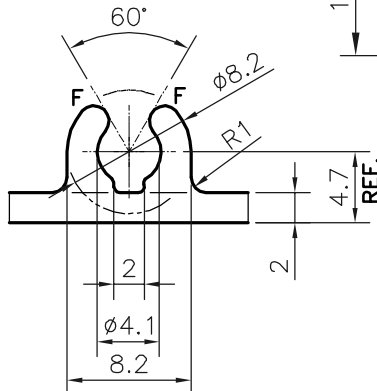
S6451



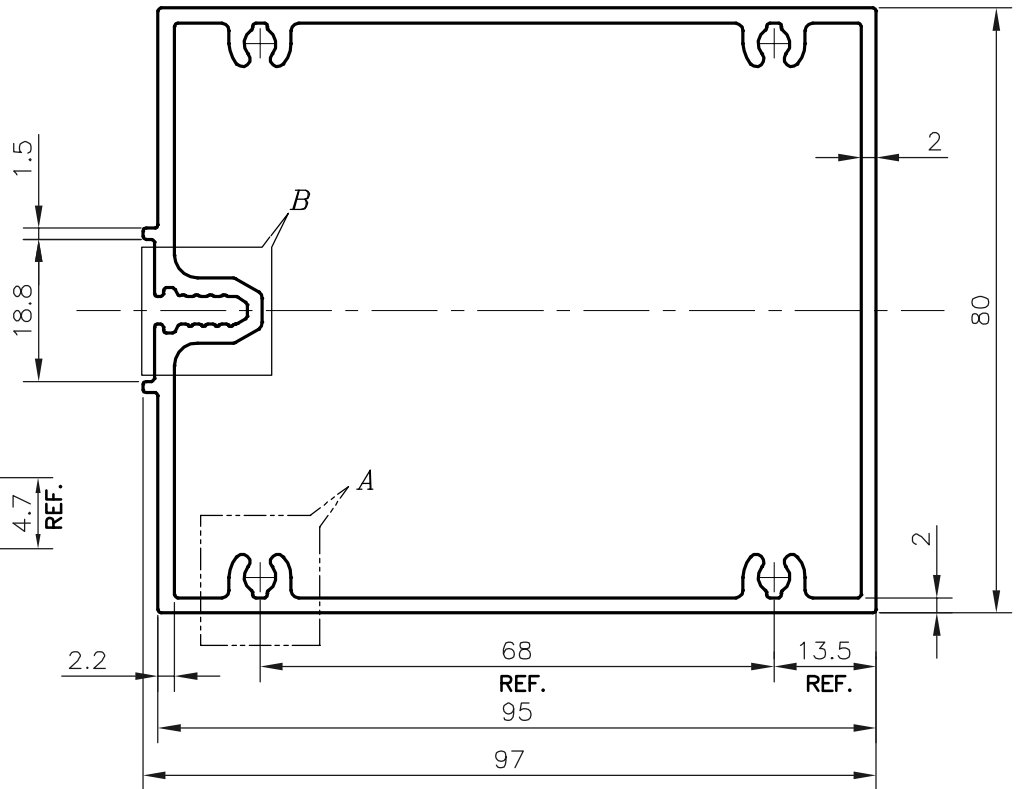
S6447



DETAIL OF "B"
SCALE 2:1



DETAIL OF "A"
SCALE 2:1



TOLERANCES ON OVERALL DIMENSIONS OF HOLLOW SECTIONS

UPTO 20.0mm - ±0.30	UPTO 80.0mm - ±0.70	UPTO 180.0mm - ±1.27	1. STRAIGHTNESS=1.7mm/M 2. TWIST=1.7mm/M 3. ANGULARITY= ±1° 4. FLATNESS =0.006xWIDTH
UPTO 30.0mm - ±0.38	UPTO 100.0mm - ±0.80	UPTO 200.0mm - ±1.40	
UPTO 40.0mm - ±0.45	UPTO 120.0mm - ±0.90	UPTO 225.0mm - ±1.52	
UPTO 50.0mm - ±0.52	UPTO 140.0mm - ±1.00		
UPTO 60.0mm - ±0.60	UPTO 160.0mm - ±1.14		



SYMBOL OF QUALITY
AN ISO 9001 COMPANY

JINDAL ALUMINIUM LTD.
BANGALORE-560073 (INDIA)

	NAME	DATE
DRAWN	DARPAN	09-08-2019
CHECKED		
APPROVED	B.NATARAJA	14-08-2019
SCALE		1:1
AREA mm ²		867.036
PERIMETER mm.		382.288
WEIGHT kg/m		2.341
DRAWING No.	SECTION No.	
P-19920-3	-	
S6451	S6451	

- ALL DIMENSIONS ARE IN mm.
- ROUND OFF ALL SHARP CORNERS WITH 0.40 mm.
- TOLERANCES WILL BE AS PER IS:6477-1983, UNLESS OTHERWISE SPECIFIED

PARTY'S NAME	LOMA CO-DEVELOPERS 2 PRIVATE LIMITED., NAVI MUMBAI.
PARTY'S DRAWING No.	AS PER AUTOCAD DRAWING 12853
ALLOY & TEMPER	6063 T6
DESCRIPTION	CURTAIN WALL SECTION