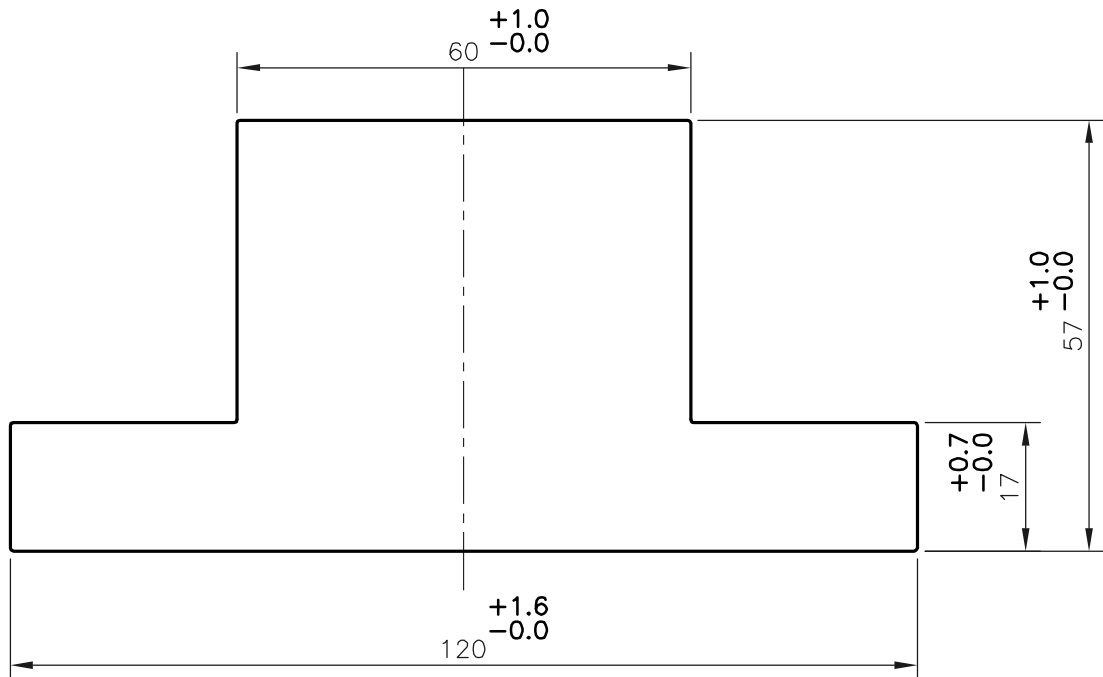


P-20242

S6515



1. STRAIGHTNESS=1.7mm/M
2. TWIST=1.7mm/M
3. ANGULARITY= $\pm 2'$
4. FLATNESS =0.007xWIDTH



SYMBOL OF QUALITY
AN ISO 9001 COMPANY

JINDAL ALUMINIUM LTD.
BANGALORE-560073 (INDIA)

	NAME	DATE
DRAWN	DARPAN	15-10-2019
CHECKED		
APPROVED	B.NATARAJA	18-10-2019
SCALE		1:1
AREA mm ²		4439.863
PERIMETER mm.		352.627
WEIGHT kg/m		11.988
DRAWING No.	SECTION No.	
P-20242	-	
S6515	S6515	

1. ALL DIMENSIONS ARE IN mm.
2. ROUND OFF ALL SHARP CORNERS WITH 0.40 mm.
3. TOLERANCES WILL BE AS PER IS:3965-1981 , UNLESS OTHERWISE SPECIFIED

PARTY'S NAME	FORWARD ENGINEERING INDUSTRIES., BHOPAL
PARTY'S DRAWING No.	AS PER DRAWING
ALLOY & TEMPER	63401 WP
DESCRIPTION	T-SECTION