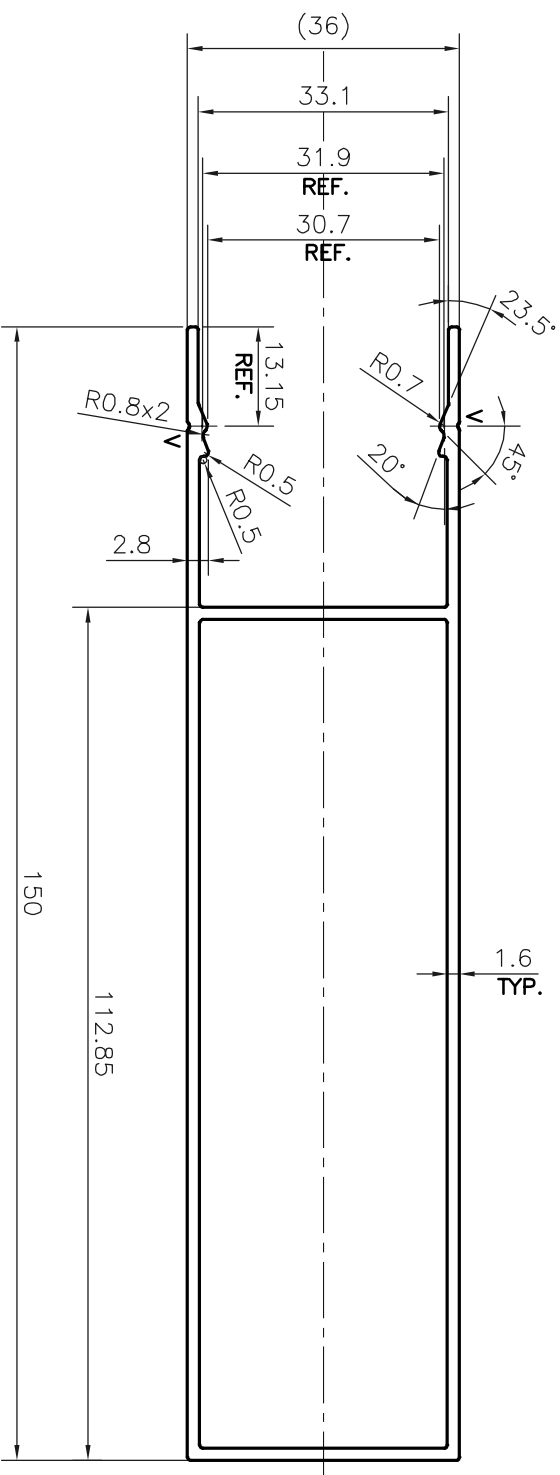
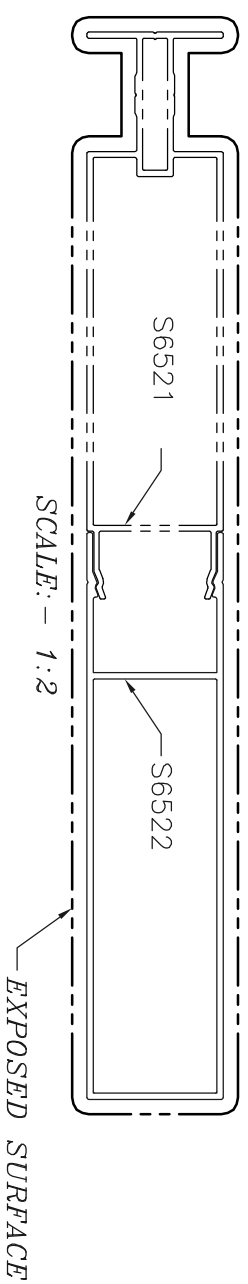


P-20282

S6522



TOLERANCES ON OVERALL DIMENSIONS OF HOLLOW SECTIONS

UPTO 20.0mm - ±0.30	UPTO 80.0mm - ±0.70	UPTO 180.0mm - ±1.27
UPTO 30.0mm - ±0.38	UPTO 100.0mm - ±0.80	UPTO 200.0mm - ±1.40
UPTO 40.0mm - ±0.45	UPTO 120.0mm - ±0.90	UPTO 225.0mm - ±1.52
UPTO 50.0mm - ±0.52	UPTO 140.0mm - ±1.00	
UPTO 60.0mm - ±0.60	UPTO 160.0mm - ±1.14	

1. STRAIGHTNESS=1.7mm/M
2. TWIST=1.7mm/M
3. ANGULARITY= ±2°
4. FLATNESS =0.006xWIDTH

<p>JINDAL ALUMINIUM LTD. BANGALORE-560073 (INDIA)</p>		<p>1. ALL DIMENSIONS ARE IN mm.</p> <p>2. ROUND OFF ALL SHARP CORNERS WITH 0.40 mm.</p> <p>3. TOLERANCES WILL BE AS PER IS:6477-1983 UNLESS OTHERWISE SPECIFIED</p>
<p>SYMBOL OF QUALITY AN ISO 9001 COMPANY</p>		
PARTY'S NAME	NIKITHA FACADE SYSTEMS., BANGALORE	
PARTY'S DRAWING No.	AS PER AUTOCAD DRAWING	
ALLOY & TEMPER	6063 T6	
DESCRIPTION	FIN-1 SECTION	
DRAWN	NAME	DATE
CHECKED	DARPAN	19-10-2019
APPROVED	B.NATARAJA	24-10-2019
SCALE 1:1		
AREA mm ² 591.071		
PERIMETER mm. 447.694		
WEIGHT kg/m 1.596		
DRAWING No.	SECTION No.	
P-20282	-	
S6522	S6522	

V="V" GROOVE 0.3x90° (2 PLACES)