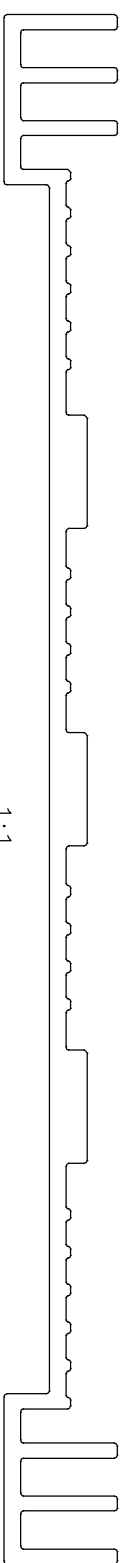
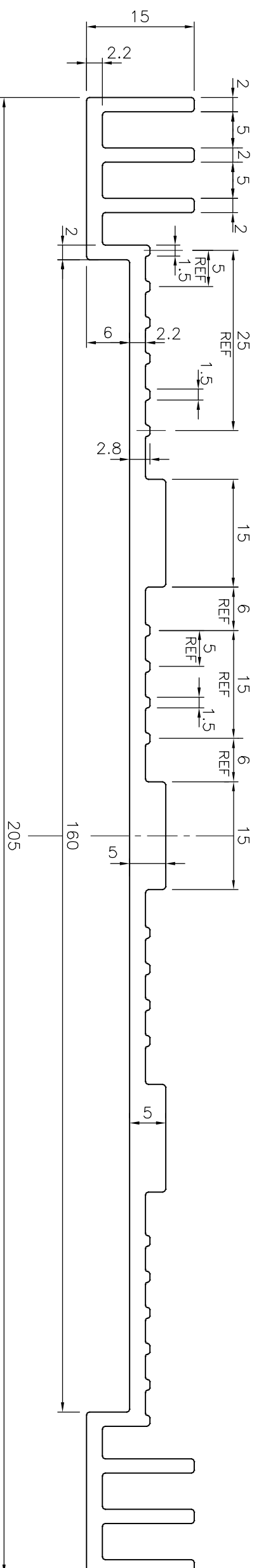


P-20353

S6534



1:1



TOLERANCES ON OVERALL WIDTHS & WIDTHS ACROSS FLATS OF BARS, & REGULAR SECTIONS

UPTO 6.40mm - ±0.20	UPTO 32.0mm - ±0.38	UPTO 120.0mm - ±0.85	UPTO 320.00mm - ±1.70
UPTO 10.0mm - ±0.23	UPTO 50.0mm - ±0.46	UPTO 160.0mm - ±1.02	
UPTO 12.0mm - ±0.25	UPTO 60.0mm - ±0.53	UPTO 200.0mm - ±1.14	
UPTO 16.0mm - ±0.28	UPTO 80.0mm - ±0.69	UPTO 250.0mm - ±1.40	
UPTO 25.0mm - ±0.30	UPTO 100.0mm - ±0.75	UPTO 300.0mm - ±1.65	



SYMBOL OF QUALITY
AN ISO 9001 COMPANY

JINDAL ALUMINIUM LTD.
BANGALORE-560073 (INDIA)

1. ALL DIMENSIONS ARE IN mm.			
2. ROUND OFF ALL SHARP CORNERS WITH 0.40 mm.			
3. TOLERANCES WILL BE AS PER IS:3965-1981 UNLESS OTHERWISE SPECIFIED			

PARTY'S NAME	ASCENTECH LIGHTENING SOLUTION, FARIDABAD		
PARTY'S DRAWING No.	AS PER DRAWING		
ALLOY & TEMPER	6063 T6		
DESCRIPTION	HEAT SINK SECTION		

DRAWN NAME J.P.KAUSHIK DATE 31-10-2019

CHECKED

APPROVED B.NATARAJA 06-11-2019

SCALE 1.5:1

AREA mm² 772.463

PERIMETER mm. 615.46

WEIGHT kg/m 2.086

DRAWING No. P-20353 SECTION No.

S6534 S6534