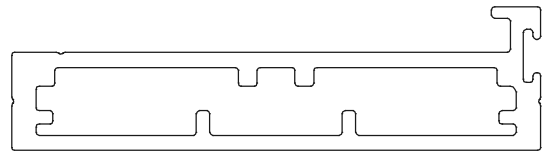
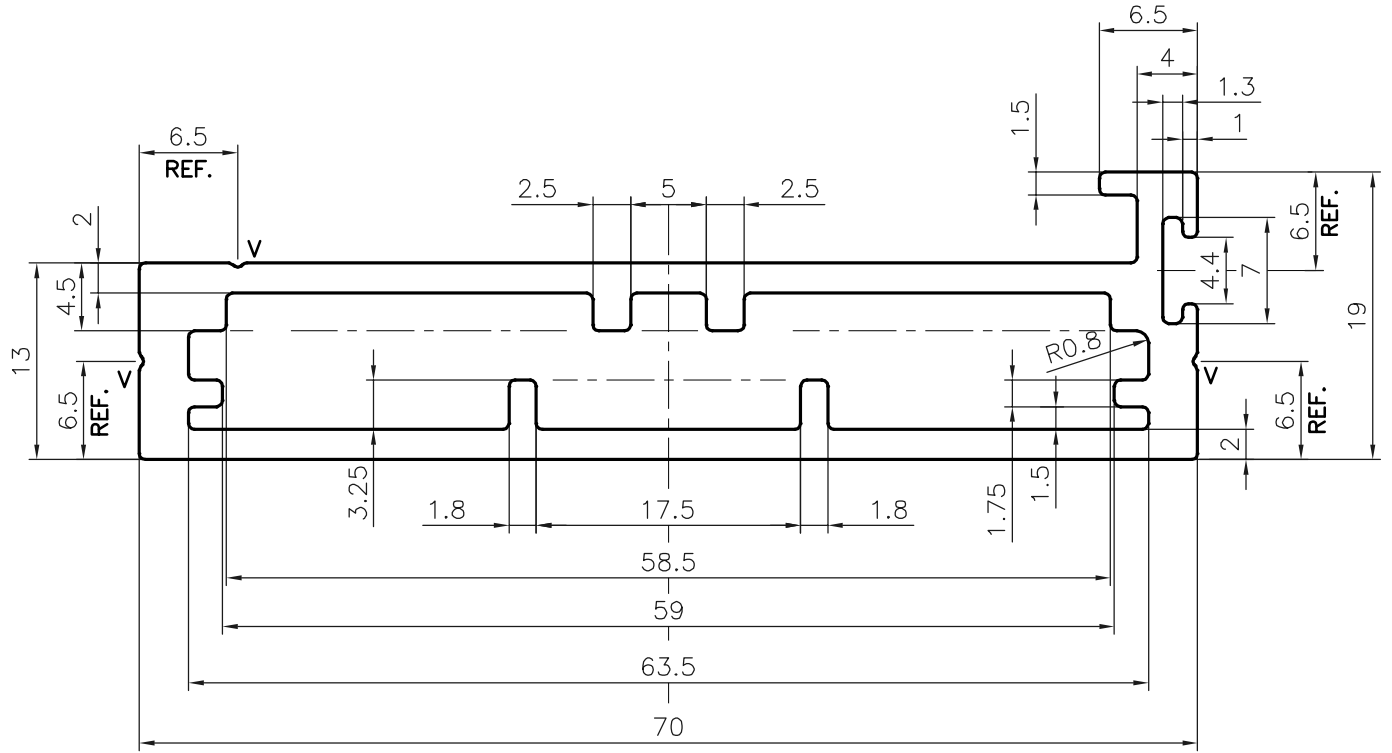


P-20193-2

S6538



1:1



V = V GROOVE 0.3x90° (3 PLACES)

TOLERANCES ON OVERALL DIMENSIONS OF HOLLOW SECTIONS

UPTO 20.0mm - ±0.30	UPTO 80.0mm - ±0.70	UPTO 180.0mm - ±1.27	1. STRAIGHTNESS=1.7mm/M 2. TWIST=1.7mm/M 3. ANGULARITY= ±2° 4. FLATNESS =0.006xWIDTH
UPTO 30.0mm - ±0.38	UPTO 100.0mm - ±0.80	UPTO 200.0mm - ±1.40	
UPTO 40.0mm - ±0.45	UPTO 120.0mm - ±0.90	UPTO 225.0mm - ±1.52	
UPTO 50.0mm - ±0.52	UPTO 140.0mm - ±1.00		
UPTO 60.0mm - ±0.60	UPTO 160.0mm - ±1.14		



SYMBOL OF QUALITY
AN ISO 9001 COMPANY

JINDAL ALUMINIUM LTD.
BANGALORE-560073 (INDIA)

	NAME	DATE
DRAWN	DARPAN	25-10-2019
CHECKED		
APPROVED	B.NATARAJA	07-11-2019
SCALE		2:1
AREA mm ²		396.925
PERIMETER mm.		190.618
WEIGHT kg/m		1.072
DRAWING No.		SECTION No.
P-20193-2		
S6538		S6538

- ALL DIMENSIONS ARE IN mm.
- ROUND OFF ALL SHARP CORNERS WITH 0.40 mm.
- TOLERANCES WILL BE AS PER **IS:6477-1983** UNLESS OTHERWISE SPECIFIED

PARTY'S NAME	SAPNA KITCHENS, GURGAON
PARTY'S DRAWING No.	AS PER DRAWING & SAMPLE
ALLOY & TEMPER	6063 T6
DESCRIPTION	MISC. SECTION