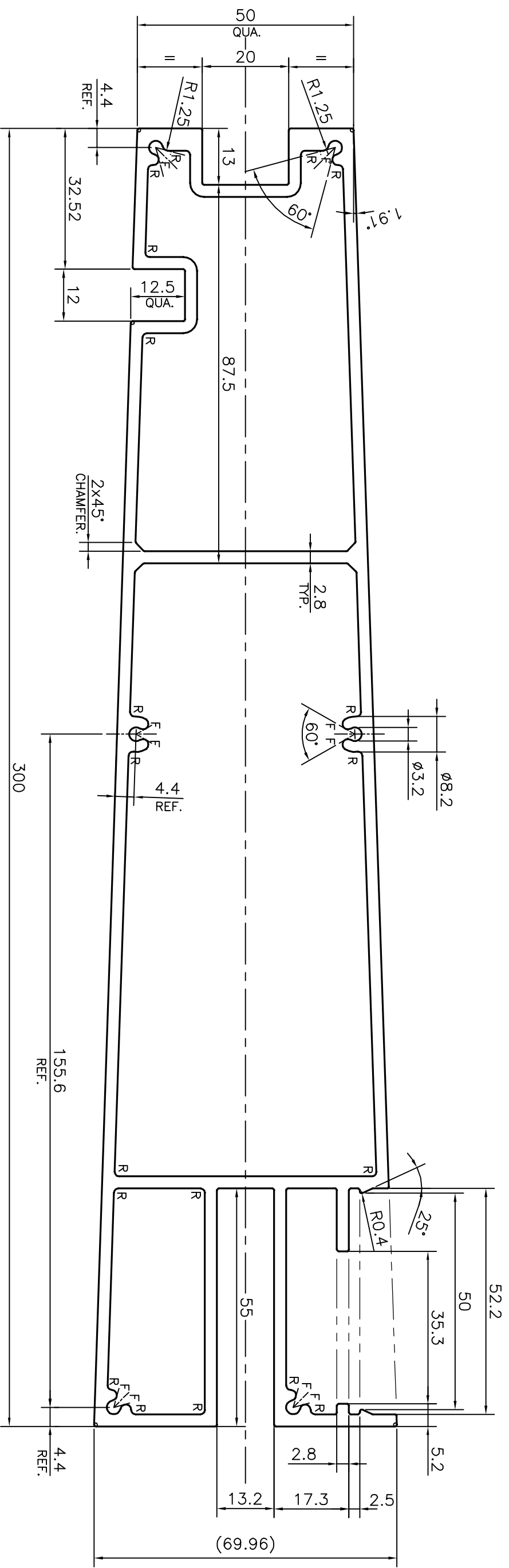


P-20335

S6573

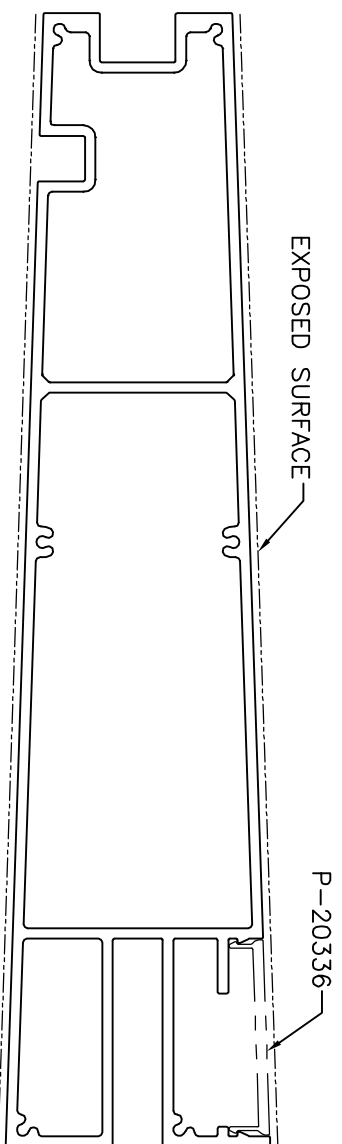


R=R1 (19 PLACES)
F=FULL RADIUS (10 PLACES)

TOLERANCES ON OVERALL DIMENSIONS OF HOLLOW SECTIONS

UPTO 20.0mm - ±0.30	UPTO 80.0mm - ±0.70	UPTO 180.0mm - ±1.27
UPTO 30.0mm - ±0.38	UPTO 100.0mm - ±0.80	UPTO 200.0mm - ±1.40
UPTO 40.0mm - ±0.45	UPTO 120.0mm - ±0.90	UPTO 225.0mm - ±1.52
UPTO 50.0mm - ±0.52	UPTO 140.0mm - ±1.00	
UPTO 60.0mm - ±0.60	UPTO 160.0mm - ±1.14	

1. STRAIGHTNESS=1.7mm/M
2. TWIST=1.7mm/M
3. ANGULARITY= ±2°
4. FLATNESS =0.006xWIDTH



SCALE: - 2:1

<p>JINDAL SYMBOL OF QUALITY AN ISO 9001 COMPANY</p>		<p>JINDAL ALUMINIUM LTD. BANGALORE-560073 (INDIA)</p>	
<p>1. ALL DIMENSIONS ARE IN mm. 2. ROUND OFF ALL SHARP CORNERS WITH 0.40 mm. 3. TOLERANCES WILL BE AS PER IS:6477-1983 UNLESS OTHERWISE SPECIFIED</p>			
PARTY'S NAME		MFAR CONSTRUCTIONS PVT. LTD., BANGALORE.	
PARTY'S DRAWING No.		AS PER DRAWING	
ALLOY & TEMPER		6063 T6	
DESCRIPTION		CURTAIN WALL SECTION	
DRAWN	NAME	DATE	
CHECKED	DARPAN	28-10-2019	
APPROVED	B.NATARAJA	27-11-2019	
SCALE		1:1	
AREA mm ²		2713.063	
PERIMETER mm.		965.491	
WEIGHT kg/m		7.325	
DRAWING No.		SECTION No.	
P-20335		-	
S6573		S6573	