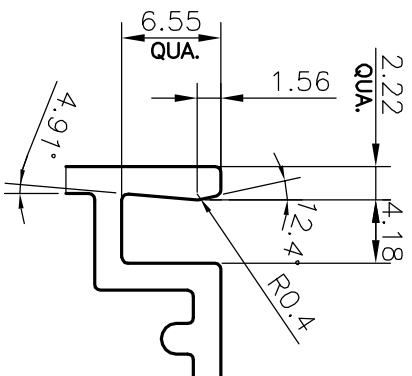
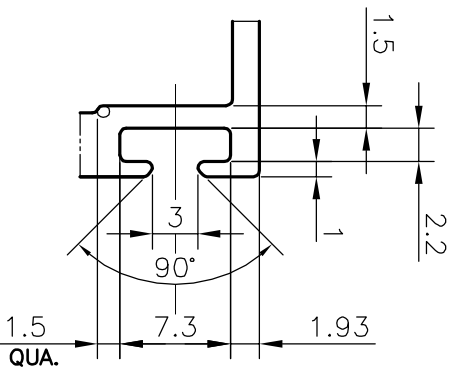


P-20411

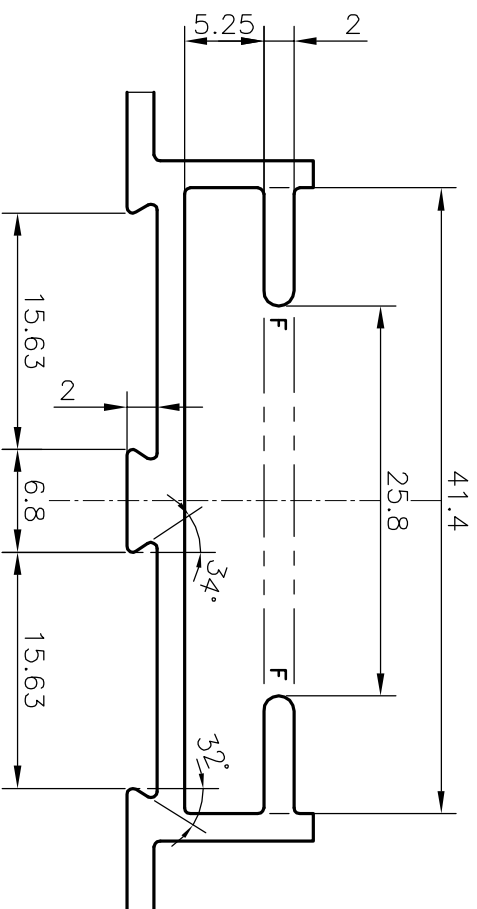
S6590



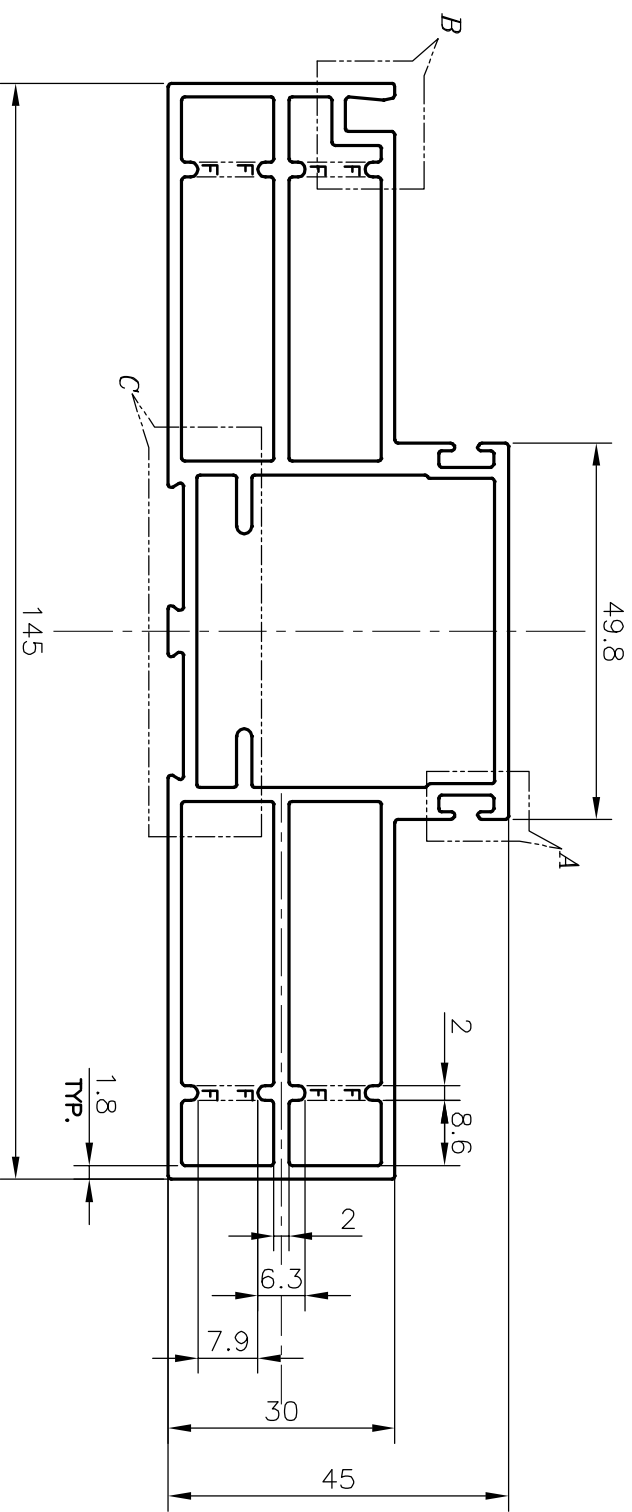
DETAIL OF "B"
SCALE 2:1



DETAIL OF "A"
SCALE 2:1



DETAIL OF "C"
SCALE 2:1




F=FULL RADIUS (10 PLACES)

TOLERANCES ON OVERALL DIMENSIONS OF HOLLOW SECTIONS

UPTO 20.0mm - ±0.30	UPTO 80.0mm - ±0.70	UPTO 180.0mm - ±1.27
UPTO 30.0mm - ±0.38	UPTO 100.0mm - ±0.80	UPTO 200.0mm - ±1.40
UPTO 40.0mm - ±0.45	UPTO 120.0mm - ±0.90	UPTO 225.0mm - ±1.52
UPTO 50.0mm - ±0.52	UPTO 140.0mm - ±1.00	
UPTO 60.0mm - ±0.60	UPTO 160.0mm - ±1.14	

1. STRAIGHTNESS=1.7mm/M
2. TWIST=1.7mm/M
3. ANGULARITY= ±2°
4. FLATNESS =0.006xWIDTH

 <p>SYMBOL OF QUALITY AN ISO 9001 COMPANY</p>		<p>JINDAL ALUMINIUM LTD. BANGALORE-560073 (INDIA)</p>		DRAWN	NAME	DATE
<p>1. ALL DIMENSIONS ARE IN mm. 2. ROUND OFF ALL SHARP CORNERS WITH 0.40 mm. 3. TOLERANCES WILL BE AS PER IS:6477-1983 UNLESS OTHERWISE SPECIFIED</p>				CHECKED	DARPAN	13-11-2019
<p>PARTY'S NAME KRISHNA BUILDER. DELHI.</p>				APPROVED	B.NATARAJA	05-12-2019
<p>PARTY'S DRAWING No. AS PER AUTOCAD DRAWING</p>				SCALE		1:1
<p>ALLOY & TEMPER 6063 T6</p>				AREA mm ²		1094.963
<p>DESCRIPTION DOUBLE PATTAM SECTION FOR DOOR OUTER</p>				PERIMETER mm.		427.822
				WEIGHT kg/m		2.956
				DRAWING No.		P-20411
				SECTION No.		-
						S6590
						S6590