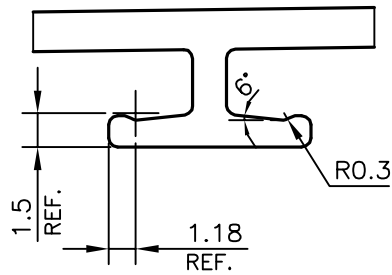


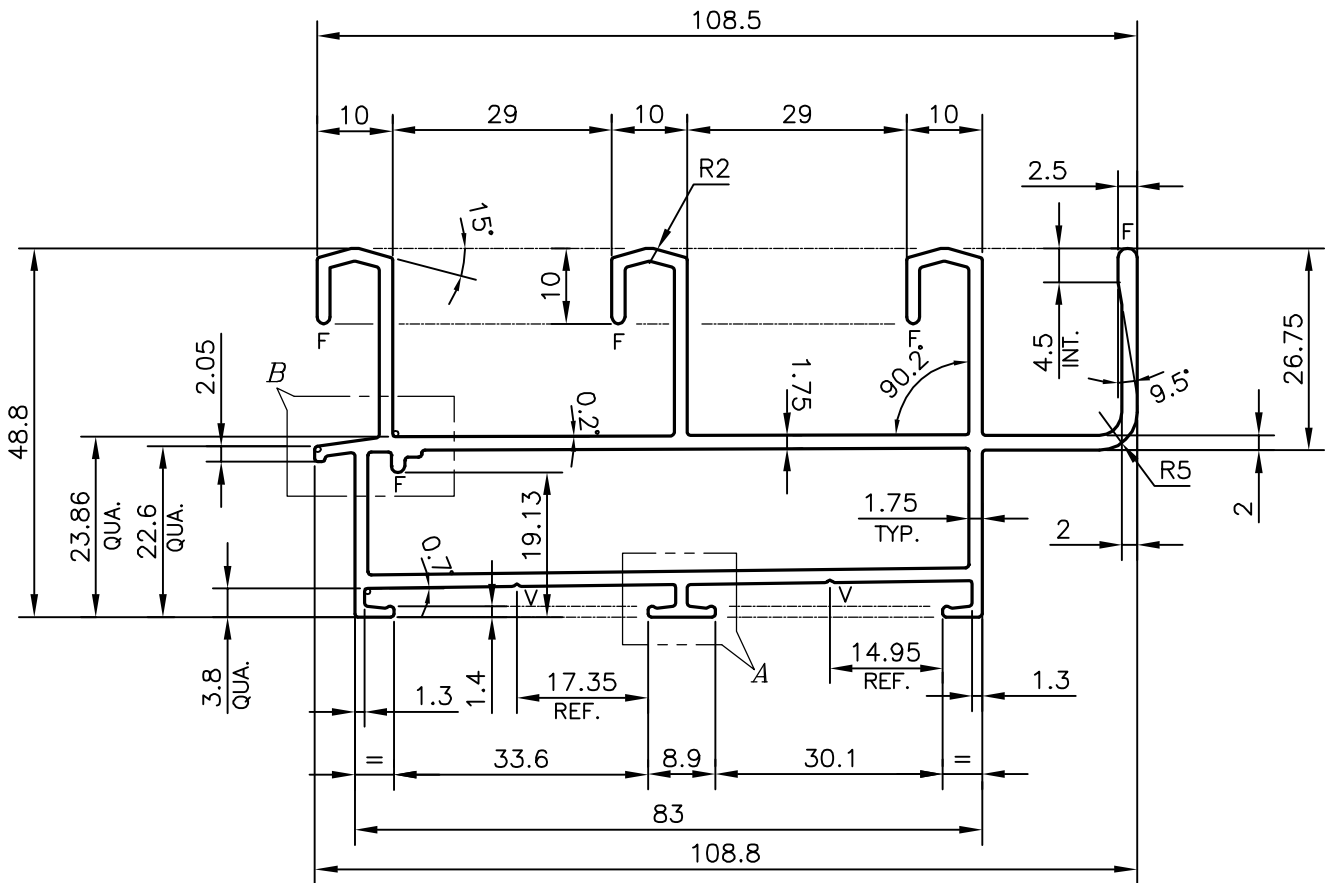
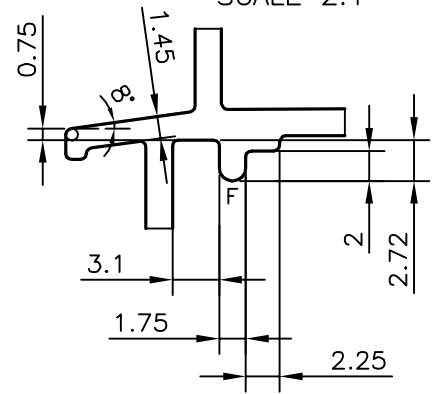
P-20504

S6620

DETAIL OF "B"
SCALE 2:1



DETAIL OF "A"
SCALE 3:1



F = FULL RADIUS(4 PLACES)

TOLERANCES ON OVERALL DIMENSIONS OF HOLLOW SECTIONS

| | | | |
|---------------------|----------------------|----------------------|---|
| UPTO 20.0mm - ±0.30 | UPTO 80.0mm - ±0.70 | UPTO 180.0mm - ±1.27 | 1. STRAIGHTNESS=1.7mm/M 2. TWIST=1.7mm/M 3. ANGULARITY= ±2° 4. FLATNESS =0.006xWIDTH |
| UPTO 30.0mm - ±0.38 | UPTO 100.0mm - ±0.80 | UPTO 200.0mm - ±1.40 | |
| UPTO 40.0mm - ±0.45 | UPTO 120.0mm - ±0.90 | UPTO 225.0mm - ±1.52 | |
| UPTO 50.0mm - ±0.52 | UPTO 140.0mm - ±1.00 | | |
| UPTO 60.0mm - ±0.60 | UPTO 160.0mm - ±1.14 | | |



SYMBOL OF QUALITY
AN ISO 9001 COMPANY

JINDAL ALUMINIUM LTD.
BANGALORE-560073 (INDIA)

| | NAME | DATE |
|----------|-------------|------------|
| DRAWN | J.P.KAUSHIK | 12-12-2019 |
| CHECKED | | |
| APPROVED | B.NATARAJA | 26-12-2019 |

- ALL DIMENSIONS ARE IN mm.
- ROUND OFF ALL SHARP CORNERS WITH 0.40 mm.
- TOLERANCES WILL BE AS PER IS:6477-1983 , UNLESS OTHERWISE SPECIFIED

| | |
|----------------------|---------|
| SCALE | 1:1 |
| AREA mm ² | 696.16 |
| PERIMETER mm. | 588.595 |
| WEIGHT kg/m | 1.880 |

| | |
|---------------------|------------------------------------|
| PARTY'S NAME | DEO LEELA FACADE SYSTEMS LLP, PUNE |
| PARTY'S DRAWING No. | DLFS-001 |
| ALLOY & TEMPER | 6063 T6 |
| DESCRIPTION | WINDOW SECTION-3 TRACK |

| | |
|-------------|-------------|
| DRAWING No. | SECTION No. |
| P-20504 | - |
| S6620 | S6620 |