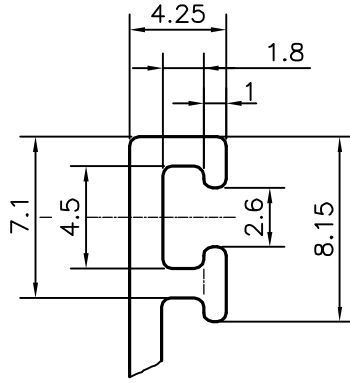
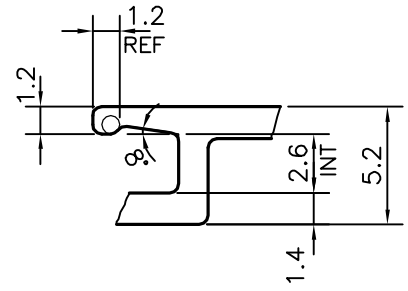


P-20512

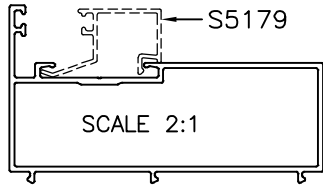
S6623



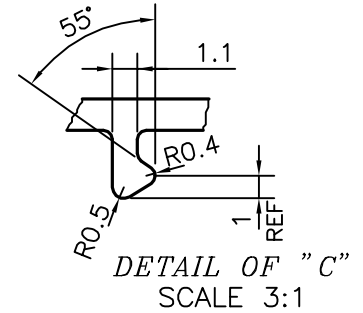
DETAIL OF "A"
SCALE 3:1



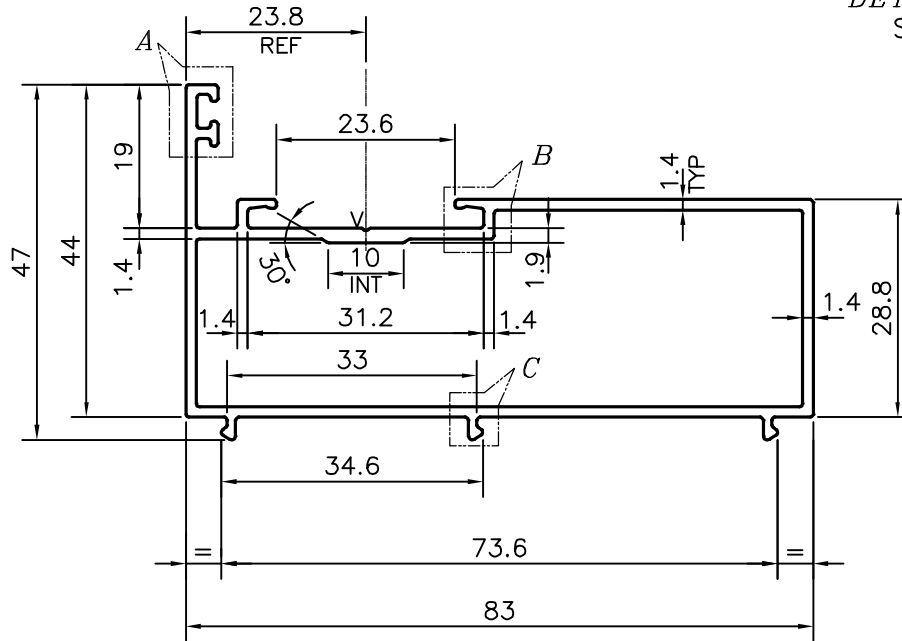
DETAIL OF "B"
SCALE 3:1



SCALE 2:1



DETAIL OF "C"
SCALE 3:1



V = V GROOVE 0.3x90°(1 PLACE)

TOLERANCES ON OVERALL DIMENSIONS OF HOLLOW SECTIONS

UPTO 20.0mm - ±0.30	UPTO 80.0mm - ±0.70	UPTO 180.0mm - ±1.27	1. STRAIGHTNESS=1.7mm/M 2. TWIST=1.7mm/M 3. ANGULARITY= ±2° 4. FLATNESS =0.006xWIDTH
UPTO 30.0mm - ±0.38	UPTO 100.0mm - ±0.80	UPTO 200.0mm - ±1.40	
UPTO 40.0mm - ±0.45	UPTO 120.0mm - ±0.90	UPTO 225.0mm - ±1.52	
UPTO 50.0mm - ±0.52	UPTO 140.0mm - ±1.00		
UPTO 60.0mm - ±0.60	UPTO 160.0mm - ±1.14		



SYMBOL OF QUALITY
AN ISO 9001 COMPANY

JINDAL ALUMINIUM LTD.
BANGALORE-560073 (INDIA)

	NAME	DATE
DRAWN	J.P.KAUSHIK	18-12-2019
CHECKED		
APPROVED	B.NATARAJA	26-12-2019
SCALE		1:1
AREA mm ²		373.103
PERIMETER mm.		315.307
WEIGHT kg/m		1.007
DRAWING No.	SECTION No.	
P-20512	-	
S6623	S6623	

1. ALL DIMENSIONS ARE IN mm.
2. ROUND OFF ALL SHARP CORNERS WITH 0.40 mm.
3. TOLERANCES WILL BE AS PER IS:6477-1983 , UNLESS OTHERWISE SPECIFIED

PARTY'S NAME DEO LEELA FACADE SYSTEMS LLP, PUNE

PARTY'S DRAWING No. DLFS-010

ALLOY & TEMPER 6063 T6

DESCRIPTION WINDOW SECTION-OUTER FRAME