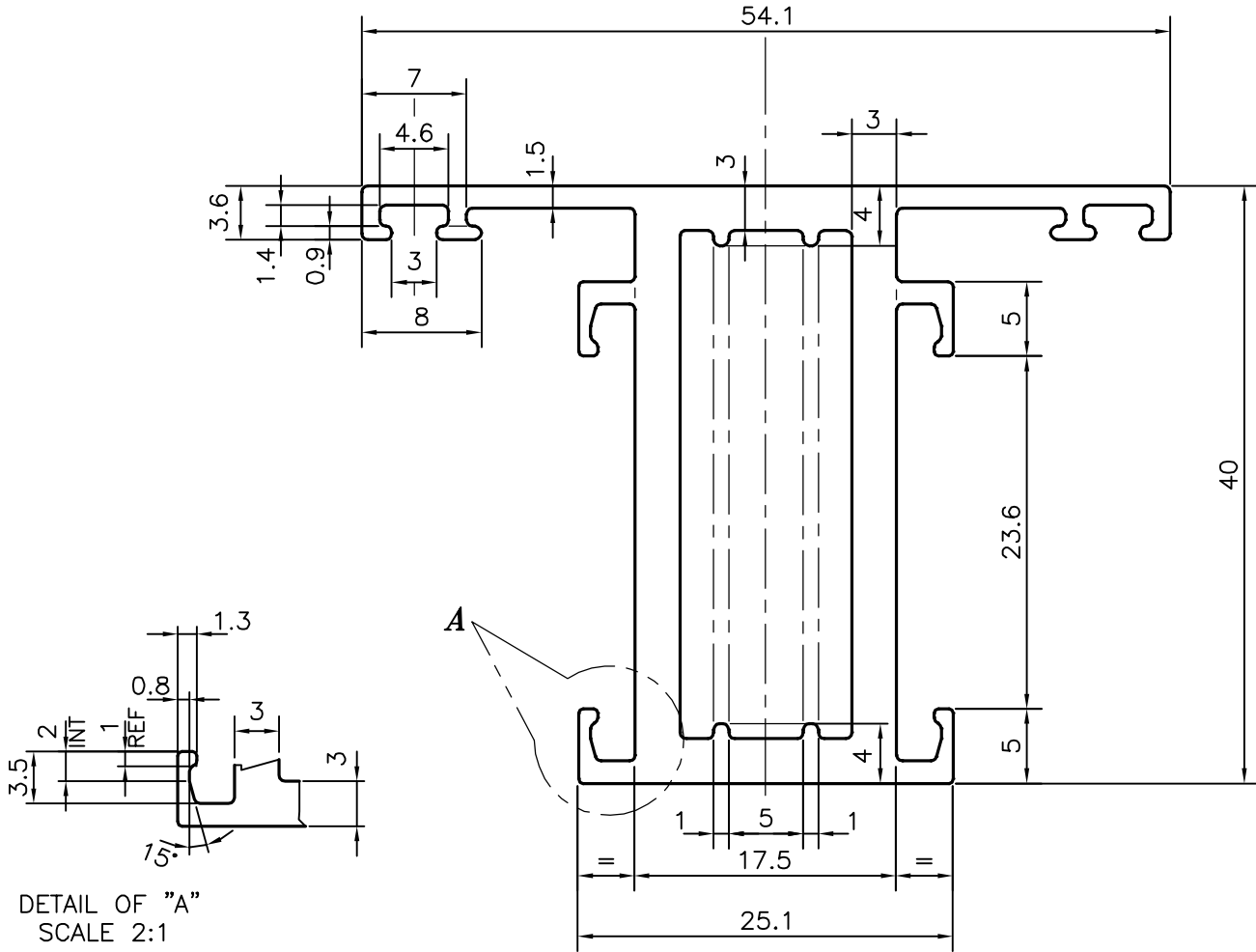
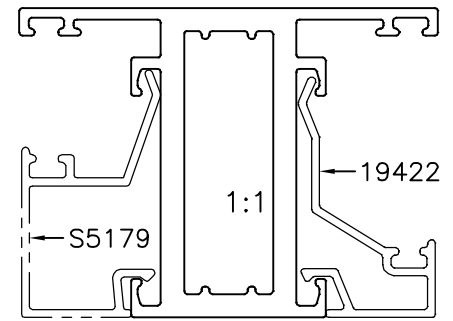


P-20474

S6630



TOLERANCES ON OVERALL DIMENSIONS OF HOLLOW SECTIONS

UPTO 20.0mm	- ±0.30
UPTO 30.0mm	- ±0.38
UPTO 40.0mm	- ±0.45
UPTO 50.0mm	- ±0.52
UPTO 60.0mm	- ±0.60

UPTO 80.0mm	- ±0.70
UPTO 100.0mm	- ±0.80
UPTO 120.0mm	- ±0.90
UPTO 140.0mm	- ±1.00
UPTO 160.0mm	- ±1.14

UPTO 180.0mm	- ±1.27
UPTO 200.0mm	- ±1.40
UPTO 225.0mm	- ±1.52

1. STRAIGHTNESS=1.7mm/M
2. TWIST=1.7mm/M
3. ANGULARITY= ±2°
4. FLATNESS =0.006xWIDTH



JINDAL ALUMINIUM LTD.
BANGALORE-560073 (INDIA)

	NAME	DATE
DRAWN	J.P.KAUSHIK	30-11-2019
CHECKED		
APPROVED	B.NATARAJA	26-12-2019
SCALE	2:1	
AREA mm ²	417.98	
PERIMETER mm.	267.905	
WEIGHT kg/m	1.129	
DRAWING No.	SECTION No.	
P-20474	-	
S6630	S6630	

1. ALL DIMENSIONS ARE IN mm.
2. ROUND OFF ALL SHARP CORNERS WITH 0.40 mm.
3. TOLERANCES WILL BE AS PER IS:6477-1983 UNLESS OTHERWISE SPECIFIED

PARTY'S NAME	FACADE CLADDING SYSTEMS, MUMBAI
PARTY'S DRAWING No.	HEAVIER OF 21845
ALLOY & TEMPER	6063 T6
DESCRIPTION	WINDOW SECTION