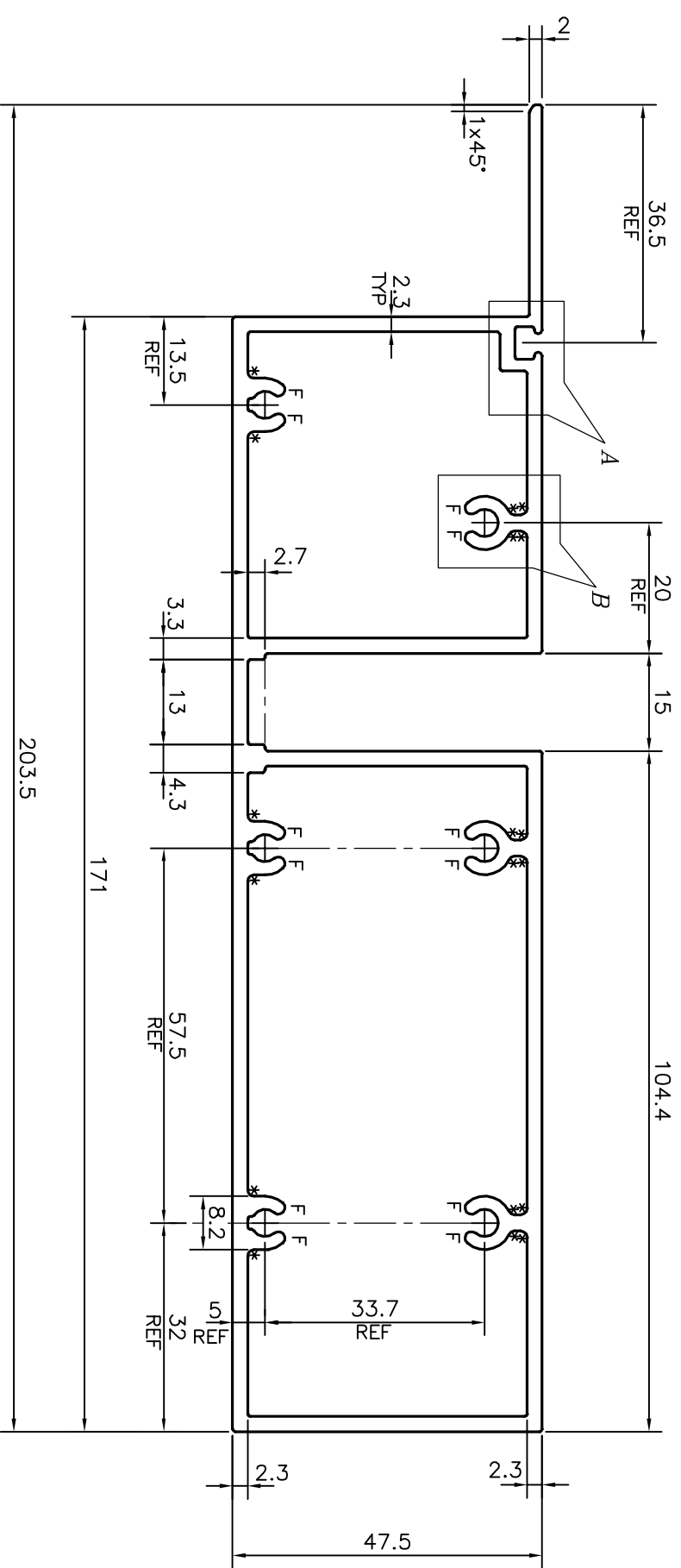


DETAIL OF "B"
SCALE :- 3:1

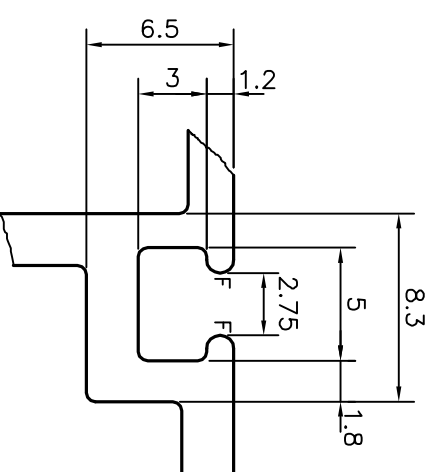


*= 1.0 RADIUS (18 PLACES)
F= FULL RADIUS (14 PLACES)

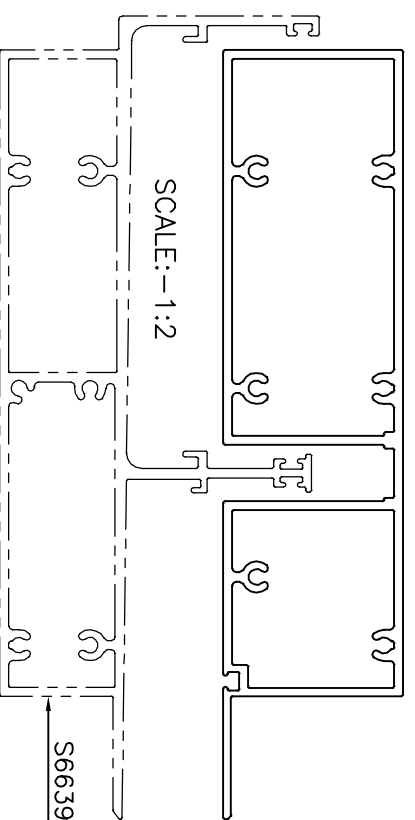
TOLERANCES ON OVERALL DIMENSIONS OF HOLLOW SECTIONS

| | | |
|---------------------|----------------------|----------------------|
| UPTO 20.0mm - ±0.30 | UPTO 80.0mm - ±0.70 | UPTO 180.0mm - ±1.27 |
| UPTO 30.0mm - ±0.38 | UPTO 100.0mm - ±0.80 | UPTO 200.0mm - ±1.40 |
| UPTO 40.0mm - ±0.45 | UPTO 120.0mm - ±0.90 | UPTO 225.0mm - ±1.52 |
| UPTO 50.0mm - ±0.52 | UPTO 140.0mm - ±1.00 | |
| UPTO 60.0mm - ±0.60 | UPTO 160.0mm - ±1.14 | |

1. STRAIGHTNESS=1.7mm/M
2. TWIST=1.7mm/M
3. ANGULARITY= ±2°
4. FLATNESS =0.006xWIDTH



DETAIL OF "A"
SCALE :- 3:1



| | | |
|--|---|--|
| <p>SYMBOL OF QUALITY AN ISO 9001 COMPANY</p> | <p>JINDAL ALUMINIUM LTD. BANGALORE-560073 (INDIA)</p> | |
| | <p>1. ALL DIMENSIONS ARE IN mm. 2. ROUND OFF ALL SHARP CORNERS WITH 0.40 mm. 3. TOLERANCES WILL BE AS PER IS:6477-1983 UNLESS OTHERWISE SPECIFIED</p> | |

| | | | | | |
|---------------------|---------------------------------|----------------------|--------------|------|------------|
| PARTY'S NAME | GLAZIUM FACADES PVT. LTD., PUNE | DRAWN | J.P. KAUSHIK | DATE | 22-11-2019 |
| PARTY'S DRAWING No. | AS PER DRAWING | CHECKED | | | |
| ALLOY & TEMPER | 6063 T6 | APPROVED | B. NATARAJA | | 04-01-2020 |
| DESCRIPTION | SILL TRANSOM SECTION | SCALE | 1:1 | | |
| | | AREA mm ² | 1420.38 | | |
| | | PERIMETER mm. | 600.813 | | |
| | | WEIGHT kg/m | 3.835 | | |
| | | DRAWING No. | P-20243-1 | | |
| | | SECTION No. | S6638 | | |