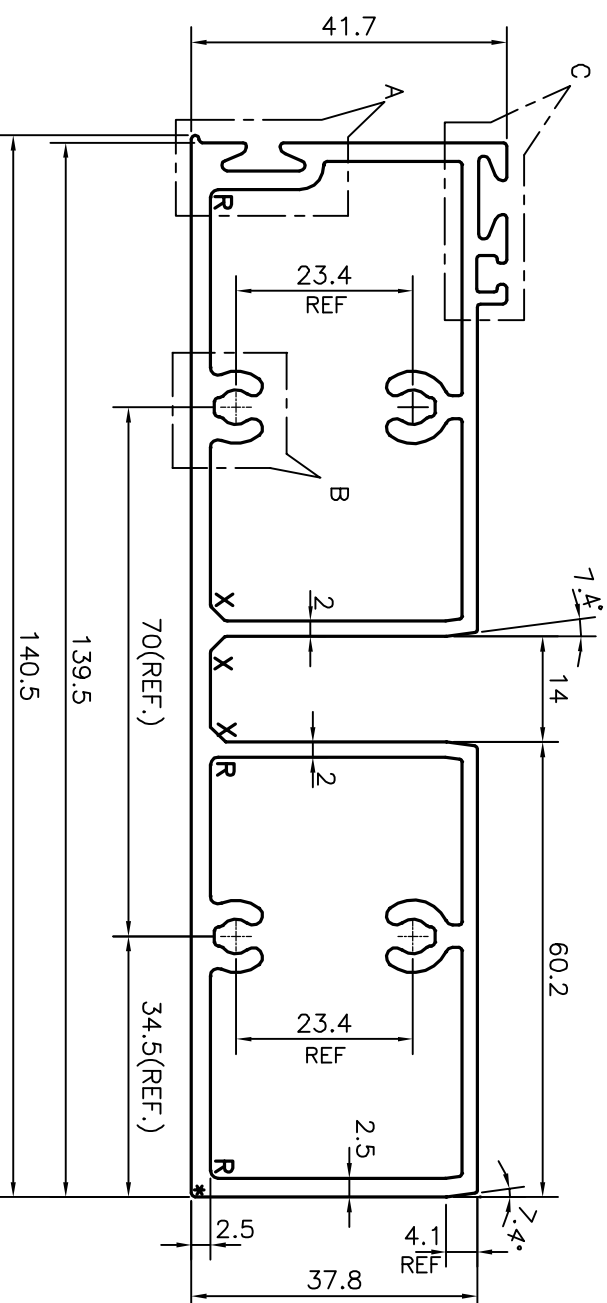
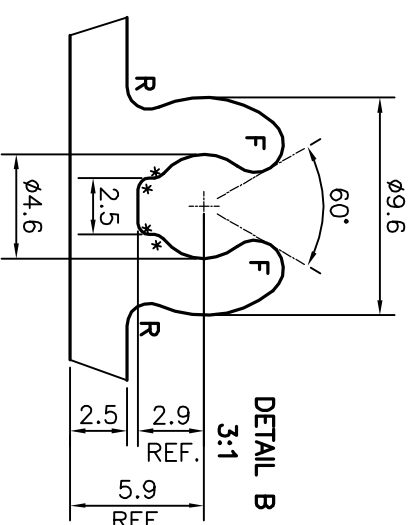
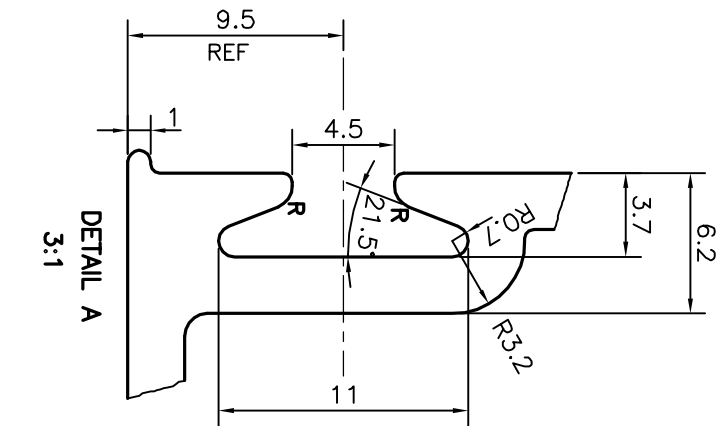
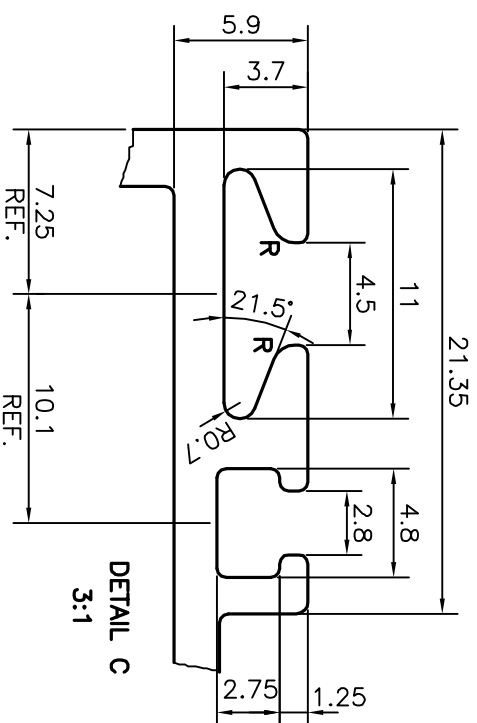
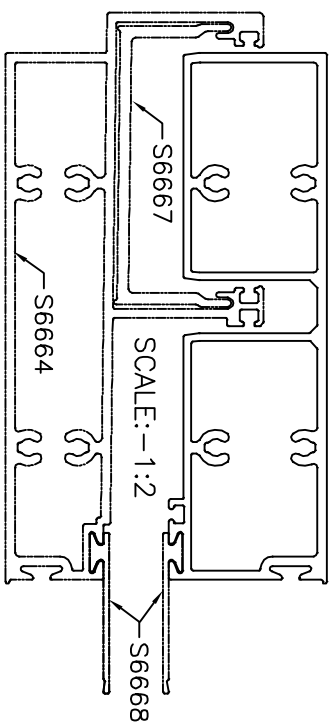


P-20472-1

S6663



TOLERANCES ON OVERALL DIMENSIONS OF HOLLOW SECTIONS

UPTO 20.0mm - ±0.30	UPTO 80.0mm - ±0.70	UPTO 180.0mm - ±1.27
UPTO 30.0mm - ±0.38	UPTO 100.0mm - ±0.80	UPTO 200.0mm - ±1.40
UPTO 40.0mm - ±0.45	UPTO 120.0mm - ±0.90	UPTO 225.0mm - ±1.52
UPTO 50.0mm - ±0.52	UPTO 140.0mm - ±1.00	
UPTO 60.0mm - ±0.60	UPTO 160.0mm - ±1.14	

F = FULL RADIUS (6 PLACES)
R = R1 mm (15 PLACES)
* = R0.5 mm (17 PLACES)
X = CHAMFER 2x45° (3 PLACES)

<p>SYMBOL OF QUALITY AN ISO 9001 COMPANY</p>		<p>JINDAL ALUMINIUM LTD. BANGALORE-560073 (INDIA)</p>	
<p>1. ALL DIMENSIONS ARE IN mm. 2. ROUND OFF ALL SHARP CORNERS WITH 0.40 mm. 3. TOLERANCES WILL BE AS PER IS:6477-1983 , UNLESS OTHERWISE SPECIFIED</p>		<p>1. STRAIGHTNESS=1.7mm/M 2. TWIST=1.7mm/M 3. ANGULARITY= ±2° 4. FLATNESS =0.006xWIDTH</p>	
PARTY'S NAME	HARDWARE SYNDICATE, BANGALORE	NAME	DATE
PARTY'S DRAWING No.	AS PER DRAWING	DRAWN	J.P.KAUSHIK 07-01-2020
ALLOY & TEMPER	6063 T6	CHECKED	
DESCRIPTION	SILL TRANSOM SECTION	APPROVED	B.NATARAJA 24-01-2020
		SCALE	1:1
		AREA mm ²	1141.761
		PERIMETER mm.	473.635
		WEIGHT kg/m	3.083
		DRAWING No.	P-20472-1
		SECTION No.	S6663