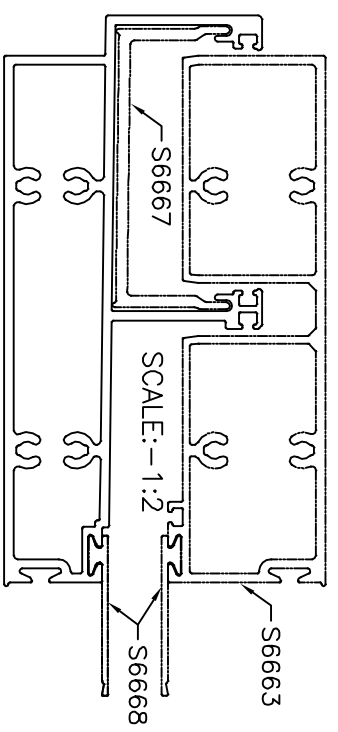
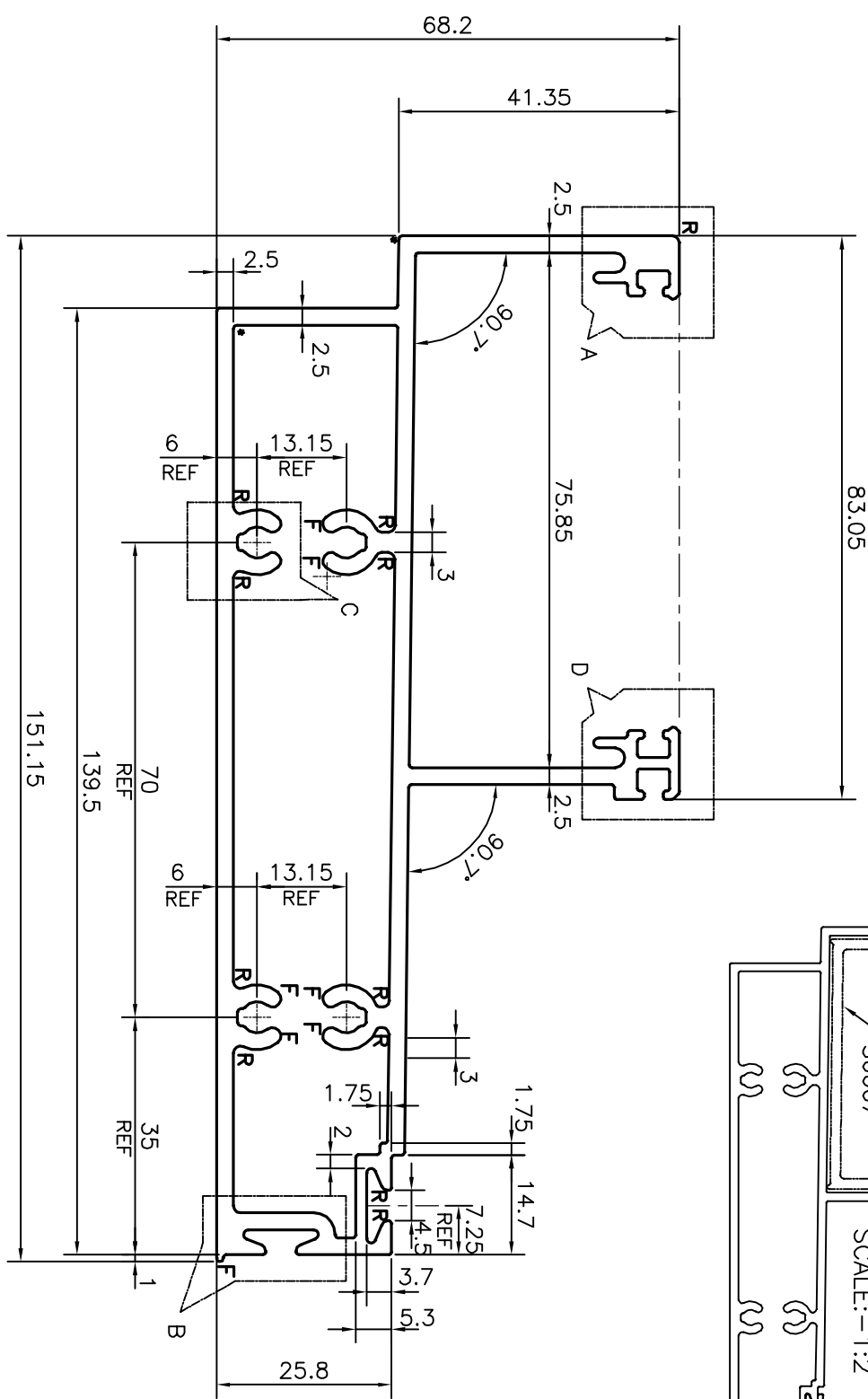
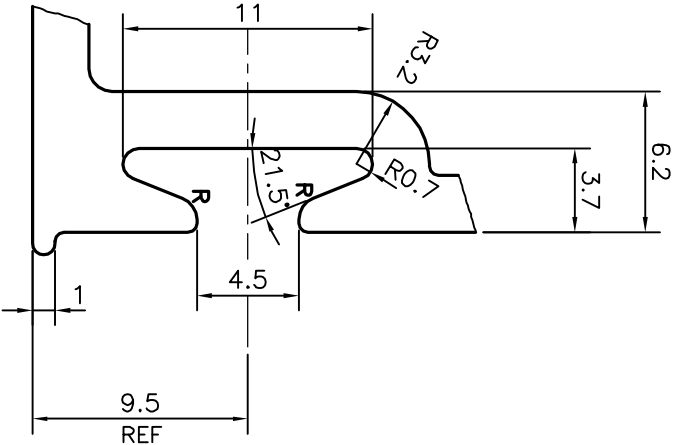
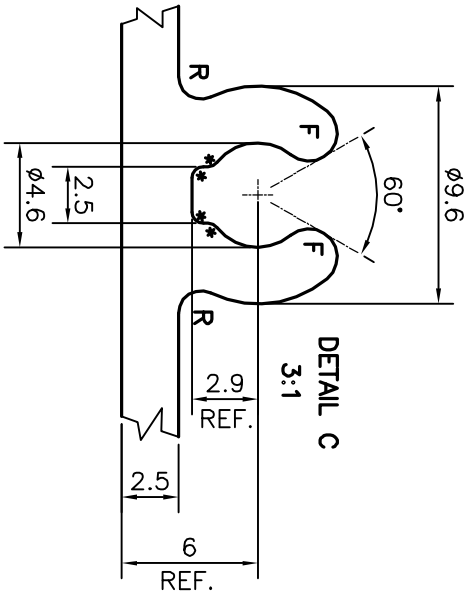
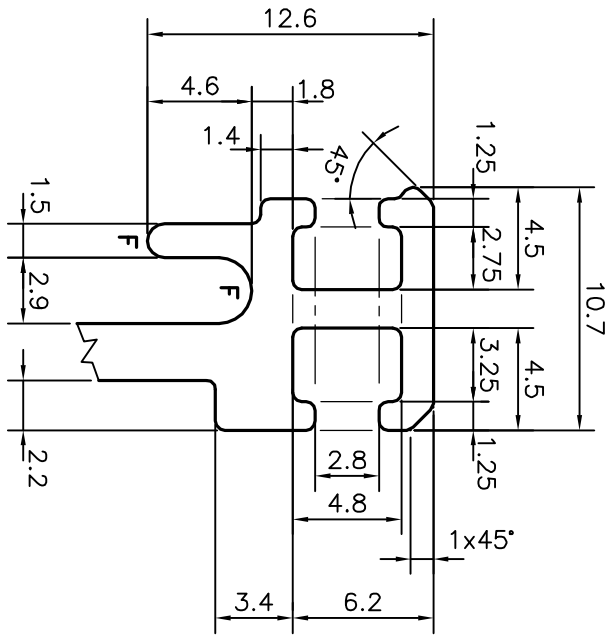
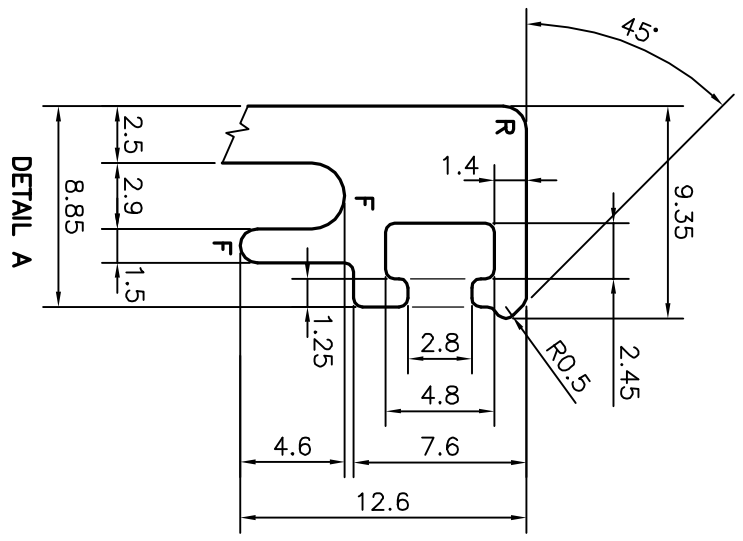


P-20486-1

S6664

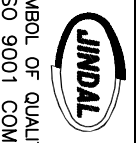


F = FULL RADIUS (13 PLACES)
R = R1 mm (13 PLACES)
* = R0.5 mm (14 PLACES)

TOLERANCES ON OVERALL DIMENSIONS OF HOLLOW SECTIONS

UPTO 20.0mm - ±0.30	UPTO 80.0mm - ±0.70	UPTO 180.0mm - ±1.27
UPTO 30.0mm - ±0.38	UPTO 100.0mm - ±0.80	UPTO 200.0mm - ±1.40
UPTO 40.0mm - ±0.45	UPTO 120.0mm - ±0.90	UPTO 225.0mm - ±1.52
UPTO 50.0mm - ±0.52	UPTO 140.0mm - ±1.00	
UPTO 60.0mm - ±0.60	UPTO 160.0mm - ±1.14	

1. STRAIGHTNESS=1.7mm/M
2. TWIST=1.7mm/M
3. ANGULARITY = ±2°
4. FLATNESS = 0.006xWIDTH



JINDAL ALUMINIUM LTD.
BANGALORE-560073 (INDIA)

1. ALL DIMENSIONS ARE IN mm.
2. ROUND OFF ALL SHARP CORNERS WITH 0.40 mm.
3. TOLERANCES WILL BE AS PER IS:6477-1983, UNLESS OTHERWISE SPECIFIED

SYMBOL OF QUALITY AN ISO 9001 COMPANY		DRAWN NAME DATE J.P.KAUSHIK 07-01-2020	
PARTY'S NAME HARDWARE SYNDICATE, BANGALORE		CHECKED	
PARTY'S DRAWING No. AS PER DRAWING		APPROVED B.NATARAJA 24-01-2020	
ALLOY & TEMPER 6063 T6		SCALE 1:1	
DESCRIPTION HEAD TRANSOM SECTION		AREA mm ² 1323.859	
		PERIMETER mm. 621.473	
		WEIGHT kg/m 3.574	
		DRAWING No. P-20486-1	
		SECTION No. S6664	