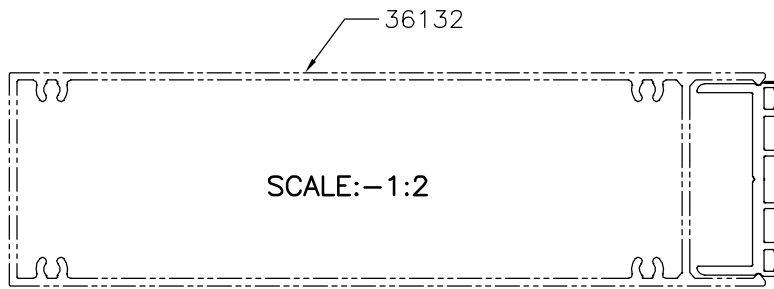
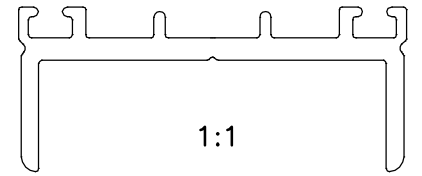
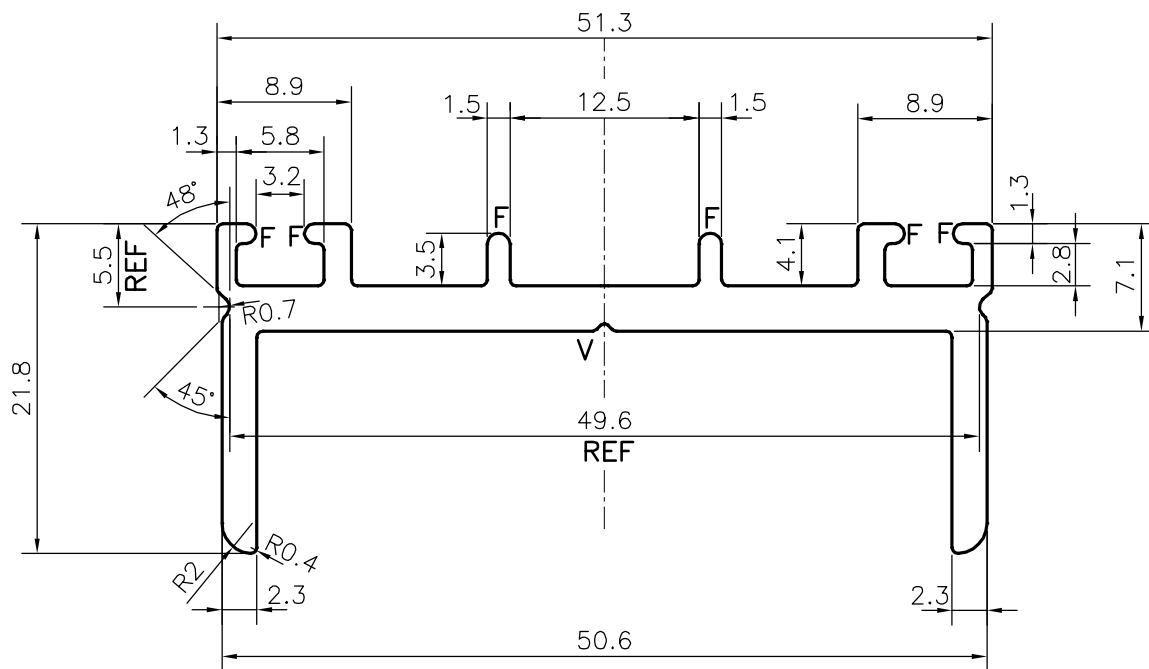


P-20627

S6698




**THERE IS NO GUARANTEE OF FITMENT
AS PER CUSTOMER'S DRAWING**



F = FULL RADIUS (6 PLACES)
V = V GROOVE 0.5x90° (1 PLACE)

TOLERANCES ON OVERALL WIDTHS & WIDTHS ACROSS FLATS OF BARS, & REGULAR SECTIONS			
UPTO 6.40mm - ±0.20	UPTO 32.0mm - ±0.38	UPTO 120.0mm - ±0.85	UPTO 320.00mm - ±1.70
UPTO 10.0mm - ±0.23	UPTO 50.0mm - ±0.46	UPTO 160.0mm - ±1.02	
UPTO 12.0mm - ±0.25	UPTO 60.0mm - ±0.53	UPTO 200.0mm - ±1.14	
UPTO 16.0mm - ±0.28	UPTO 80.0mm - ±0.69	UPTO 250.0mm - ±1.40	
UPTO 25.0mm - ±0.30	UPTO 100.0mm - ±0.75	UPTO 300.0mm - ±1.65	

 SYMBOL OF QUALITY AN ISO 9001 COMPANY	JINDAL ALUMINIUM LTD. BANGALORE-560073 (INDIA)	NAME		DATE
		DRAWN	J.P.KAUSHIK	18-01-2020
1. ALL DIMENSIONS ARE IN mm. 2. ROUND OFF ALL SHARP CORNERS WITH 0.40 mm. 3. TOLERANCES WILL BE AS PER IS:3965-1981, UNLESS OTHERWISE SPECIFIED		CHECKED		
		APPROVED	B.NATARAJA	28-01-2020
PARTY'S NAME		SCALE		2:1
		AREA mm ²		258.445
PARTY'S DRAWING No.		PERIMETER mm.		216.208
		WEIGHT kg/m		0.698
ALLOY & TEMPER		DRAWING No.		P-20627
		SECTION No.		-
DESCRIPTION		S6698		S6698
PRESSURE PLATE SECTION				