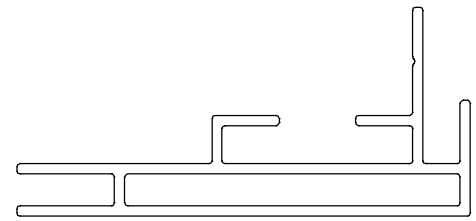
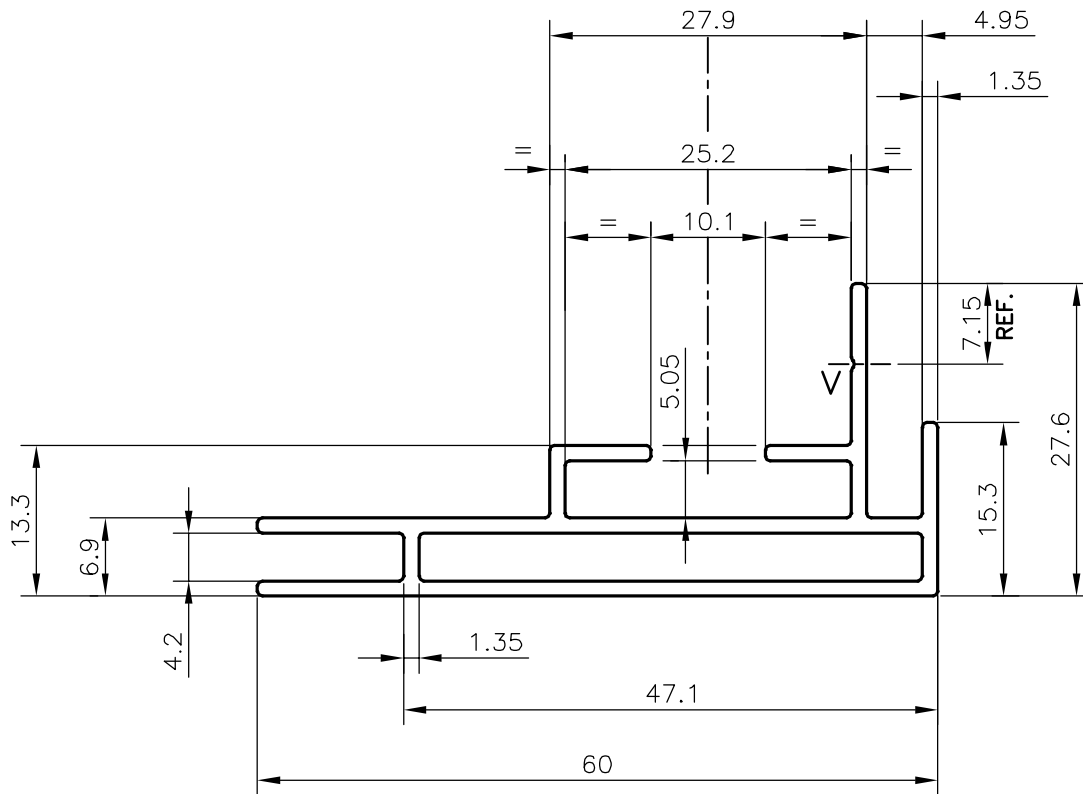


P-20655

S6722



SCALE: - 1:1



SCALE: - 1.5:1

V="V" GROOVE 0.3x90° (PLACES)

TOLERANCES ON OVERALL WIDTHS & WIDTHS ACROSS FLATS OF BARS, & REGULAR SECTIONS

UPTO 6.40mm - ±0.20
 UPTO 10.0mm - ±0.23
 UPTO 12.0mm - ±0.25
 UPTO 16.0mm - ±0.28
 UPTO 25.0mm - ±0.30

UPTO 32.0mm - ±0.38
 UPTO 50.0mm - ±0.46
 UPTO 60.0mm - ±0.53
 UPTO 80.0mm - ±0.69
 UPTO 100.0mm - ±0.75

UPTO 120.0mm - ±0.85
 UPTO 160.0mm - ±1.02
 UPTO 200.0mm - ±1.14
 UPTO 250.0mm - ±1.40
 UPTO 300.0mm - ±1.65

1. STRAIGHTNESS=1.7mm/M
 2. TWIST=1.7mm/M
 3. ANGULARITY= ±2°
 4. FLATNESS =0.007xWIDTH



SYMBOL OF QUALITY
 AN ISO 9001 COMPANY

JINDAL ALUMINIUM LTD.
 BANGALORE-560073 (INDIA)

	NAME	DATE
DRAWN	DARPAN	30-01-2020
CHECKED		
APPROVED	B.NATARAJA	18-02-2020

1. ALL DIMENSIONS ARE IN mm.
 2. ROUND OFF ALL SHARP CORNERS WITH 0.40 mm.
 3. TOLERANCES WILL BE AS PER IS:6477-1983 , UNLESS OTHERWISE SPECIFIED

SCALE	1.5:1
AREA mm ²	241.461
PERIMETER mm.	256.859
WEIGHT kg/m	0.652

PARTY'S NAME ELCARE SYSTEMS (P) LTD., COCHIN

DRAWING No.	SECTION No.
P-20655	-
S6722	S6722

PARTY'S DRAWING No. AS PER SAMPLE & DRAWING

ALLOY & TEMPER 6063 T6

DESCRIPTION MISC. SECTION