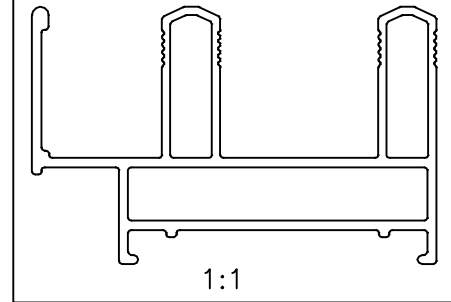
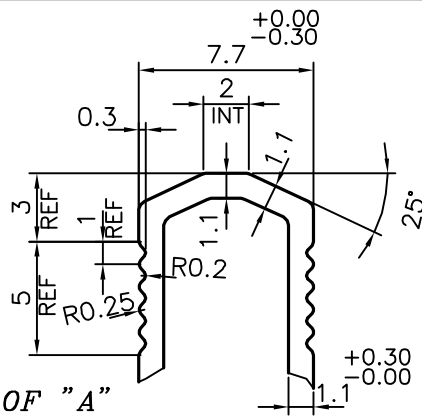
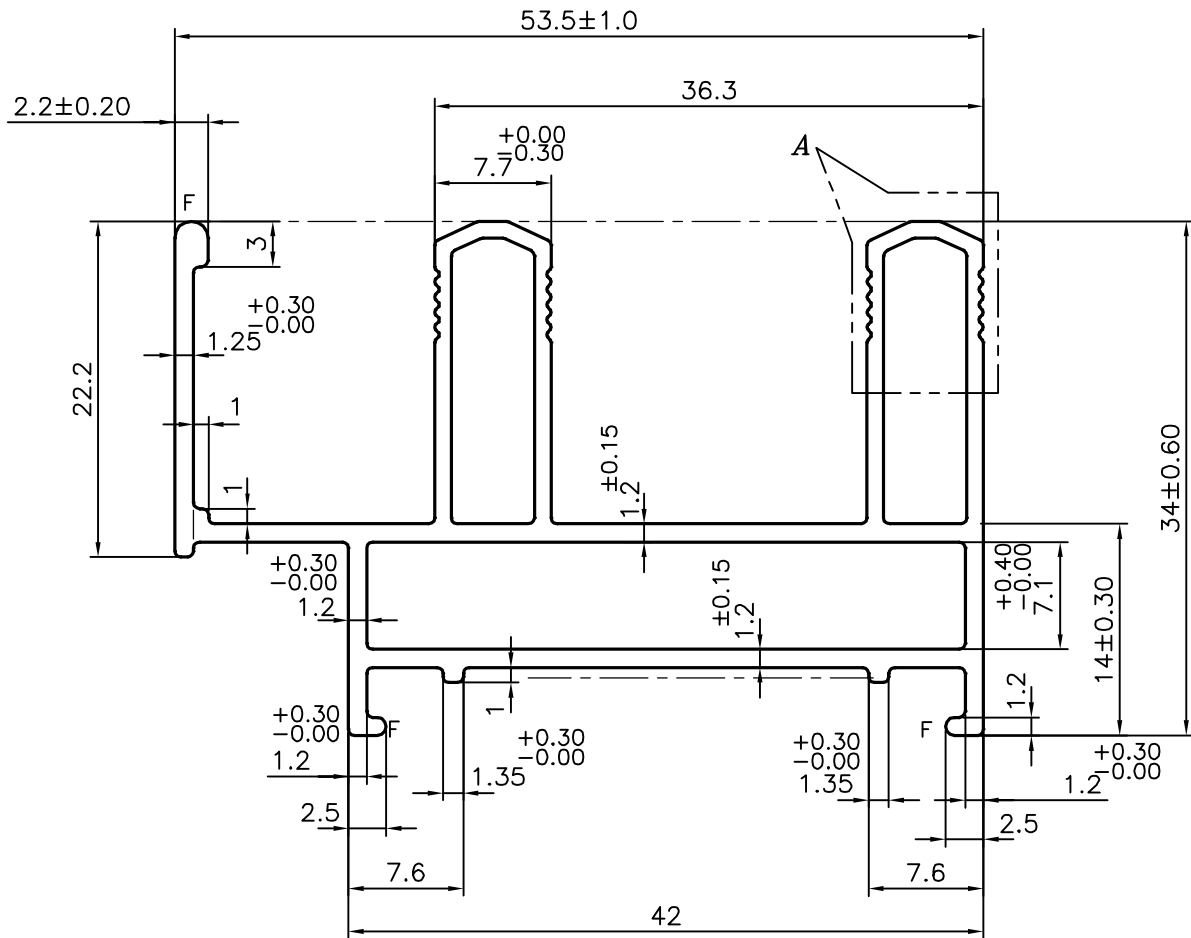


P-20517-3

S6726



DETAIL OF "A"  
SCALE 3:1



F = FULL RADIUS (3 PLACES)

TOLERANCES ON OVERALL DIMENSIONS OF HOLLOW SECTIONS

UPTO 20.0mm - ±0.30	UPTO 80.0mm - ±0.70	UPTO 180.0mm - ±1.27	1. STRAIGHTNESS=1.7mm/M 2. TWIST=1.7mm/M 3. ANGULARITY= ±2° 4. FLATNESS =0.006xWIDTH
UPTO 30.0mm - ±0.38	UPTO 100.0mm - ±0.80	UPTO 200.0mm - ±1.40	
UPTO 40.0mm - ±0.45	UPTO 120.0mm - ±0.90	UPTO 225.0mm - ±1.52	
UPTO 50.0mm - ±0.52	UPTO 140.0mm - ±1.00		
UPTO 60.0mm - ±0.60	UPTO 160.0mm - ±1.14		

	<b>JINDAL ALUMINIUM LTD.</b> BANGALORE-560073 (INDIA)	DRAWN	J.P.KAUSHIK	DATE	08-02-2020
		CHECKED			
		APPROVED	B.NATARAJA		20-02-2020
1. ALL DIMENSIONS ARE IN mm. 2. ROUND OFF ALL SHARP CORNERS WITH 0.40 mm. 3. TOLERANCES WILL BE AS PER IS:6477-1983 UNLESS OTHERWISE SPECIFIED		SCALE		2:1	
		AREA mm <sup>2</sup>		271.346	
		PERIMETER mm.		270.334	
		WEIGHT kg/m		0.733	
		DRAWING No.	SECTION No.		
PARTY'S NAME	PARAMOUNT INDUSTRIES, BANGALORE	P-20517-3	-		
PARTY'S DRAWING No.	1724-43L	S6726	S6726		
ALLOY & TEMPER	6063 T6				
DESCRIPTION	WINDOW SECTION-3TRACK(SCH)				