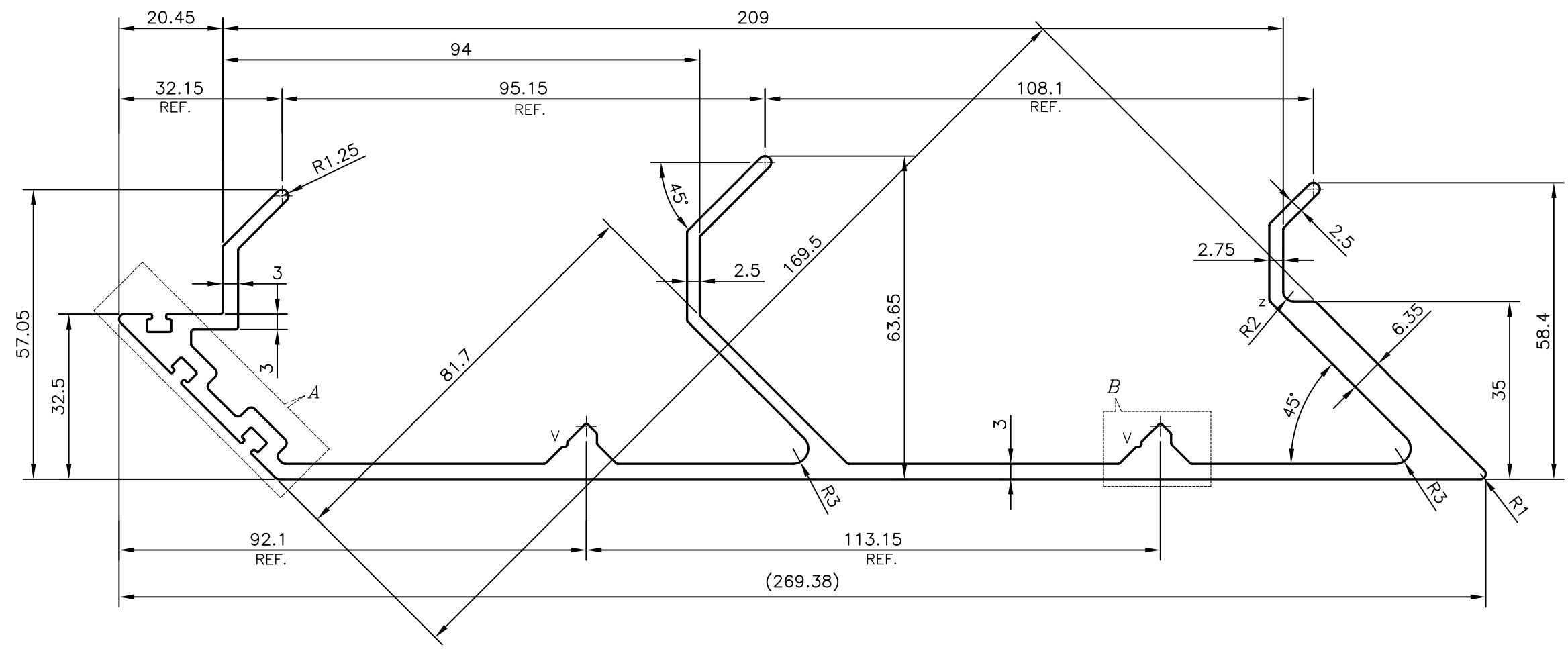
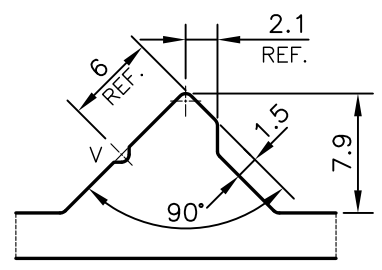
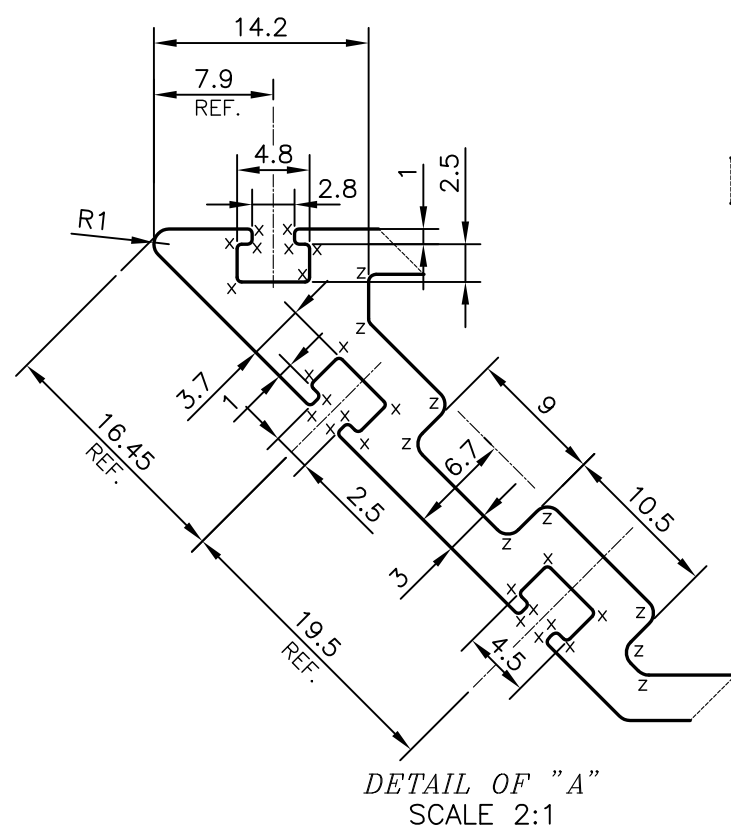


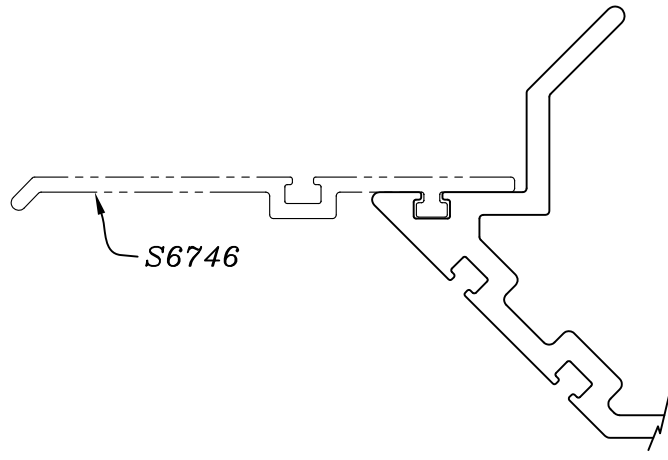
P-20661  
S6744



V = VEE GROOVE 0.5x90° (2 PLACES)  
X = RADIUS 0.3 mm. (16 PLACES)  
Z = RADIUS 1 mm. (10 PLACES)




DETAIL OF "B"  
SCALE 2:1



ROUND OFF ALL SHARP CORNERS WITH 0.50 mm.

TOLERANCES ON OVERALL WIDTHS & WIDTHS ACROSS FLATS OF BARS, & REGULAR SECTIONS			
UPTO 6.40mm - ±0.20	UPTO 32.0mm - ±0.38	UPTO 120.0mm - ±0.85	1. STRAIGHTNESS=1.7mm/M 2. TWIST=1.7mm/M 3. ANGULARITY= ±2° 4. FLATNESS =0.007xWIDTH
UPTO 10.0mm - ±0.23	UPTO 50.0mm - ±0.46	UPTO 160.0mm - ±1.02	
UPTO 12.0mm - ±0.25	UPTO 60.0mm - ±0.53	UPTO 200.0mm - ±1.14	
UPTO 16.0mm - ±0.28	UPTO 80.0mm - ±0.69	UPTO 250.0mm - ±1.40	
UPTO 25.0mm - ±0.30	UPTO 100.0mm - ±0.75	UPTO 300.0mm - ±1.65	

 SYMBOL OF QUALITY AN ISO 9001 COMPANY	<b>JINDAL ALUMINIUM LTD.</b> BANGALORE-560073 (INDIA)	NAME	DATE
		DRAWN	PARVESH 31-01-2020
		CHECKED	
		APPROVED	B.NATARAJA 25-02-2020
		SCALE	1:1
		AREA mm <sup>2</sup>	1712.883
		PERIMETER mm.	981.405
		WEIGHT kg/m	4.625
PARTY'S NAME	HARDWARE SYNDICATE, BANGALORE	DRAWING No.	SECTION No.
PARTY'S DRAWING No.	AS PER AUTOCAD DRAWING-GAPL/SKP/S4/0331	P-20661	-
ALLOY & TEMPER	6063 T6	S6744	S6744
DESCRIPTION	CURTAIN WALL SECTION-OUTWARD CORNER MALE MULLION		