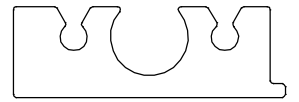
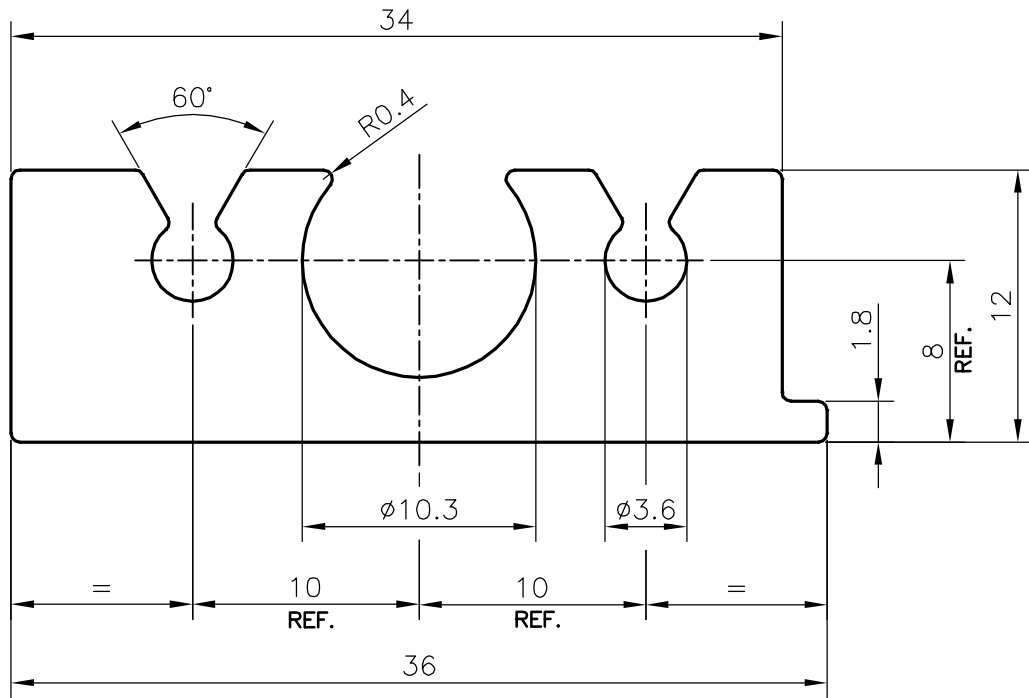


P-20648

S6758



SCALE 1:1



## TOLERANCES ON OVERALL WIDTHS &amp; WIDTHS ACROSS FLATS OF BARS, &amp; REGULAR SECTIONS

UPTO 6.40mm -  $\pm 0.20$   
 UPTO 10.0mm -  $\pm 0.23$   
 UPTO 12.0mm -  $\pm 0.25$   
 UPTO 16.0mm -  $\pm 0.28$   
 UPTO 25.0mm -  $\pm 0.30$

UPTO 32.0mm -  $\pm 0.38$   
 UPTO 50.0mm -  $\pm 0.46$   
 UPTO 60.0mm -  $\pm 0.53$   
 UPTO 80.0mm -  $\pm 0.69$   
 UPTO 100.0mm -  $\pm 0.75$

UPTO 120.0mm -  $\pm 0.85$   
 UPTO 160.0mm -  $\pm 1.02$   
 UPTO 200.0mm -  $\pm 1.14$   
 UPTO 250.0mm -  $\pm 1.40$   
 UPTO 300.0mm -  $\pm 1.65$

1. STRAIGHTNESS=1.7mm/M  
 2. TWIST=1.7mm/M  
 3. ANGULARITY=  $\pm 2^\circ$   
 4. FLATNESS =0.007xWIDTH



SYMBOL OF QUALITY  
 AN ISO 9001 COMPANY

**JINDAL ALUMINIUM LTD.**  
 BANGALORE-560073 (INDIA)

	NAME	DATE
DRAWN	DARPAN	28-01-2020
CHECKED		
APPROVED	B.NATARAJA	11-03-2020

- ALL DIMENSIONS ARE IN mm.
- ROUND OFF ALL SHARP CORNERS WITH 0.40 mm.
- TOLERANCES WILL BE AS PER IS:3965-1981, UNLESS OTHERWISE SPECIFIED

SCALE	3:1
AREA mm <sup>2</sup>	297.284
PERIMETER mm.	131.958
WEIGHT kg/m	0.803

PARTY'S NAME FARADAY'S MICRO SYSTEMS, CHENNAI

PARTY'S DRAWING No. AS PER DRAWING 27725

ALLOY & TEMPER HE9 WP

DESCRIPTION MISC. SECTION

DRAWING No.	SECTION No.
P-20648	-
S6758	S6758