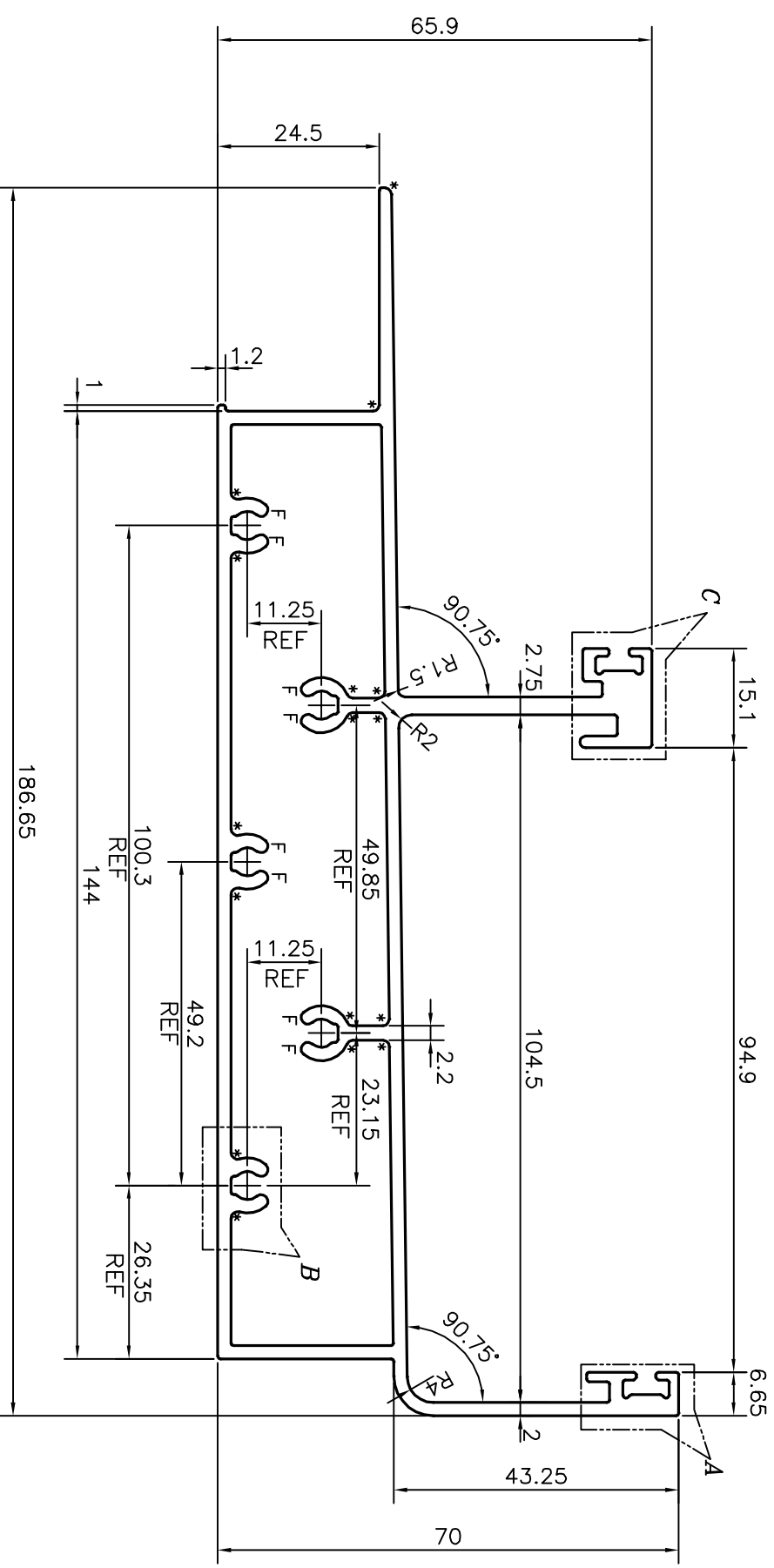
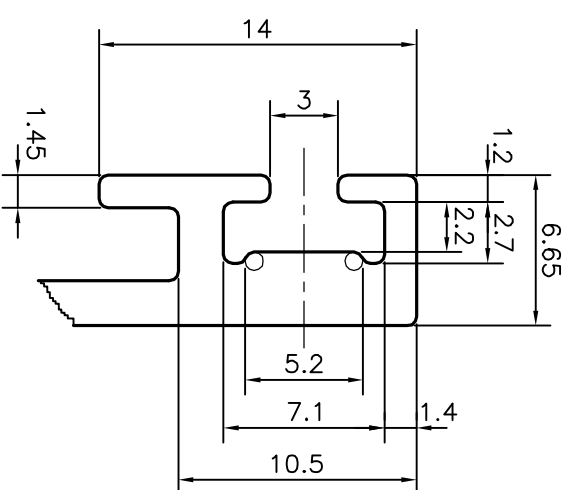
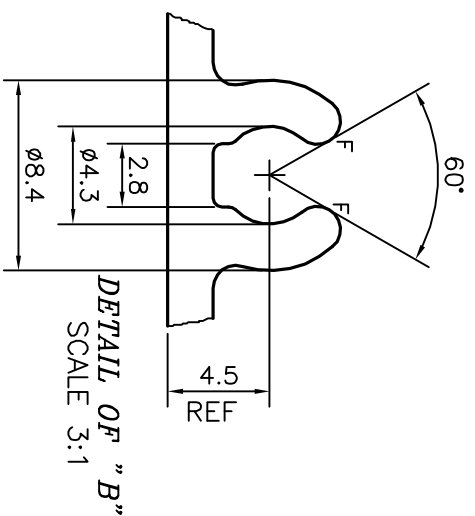
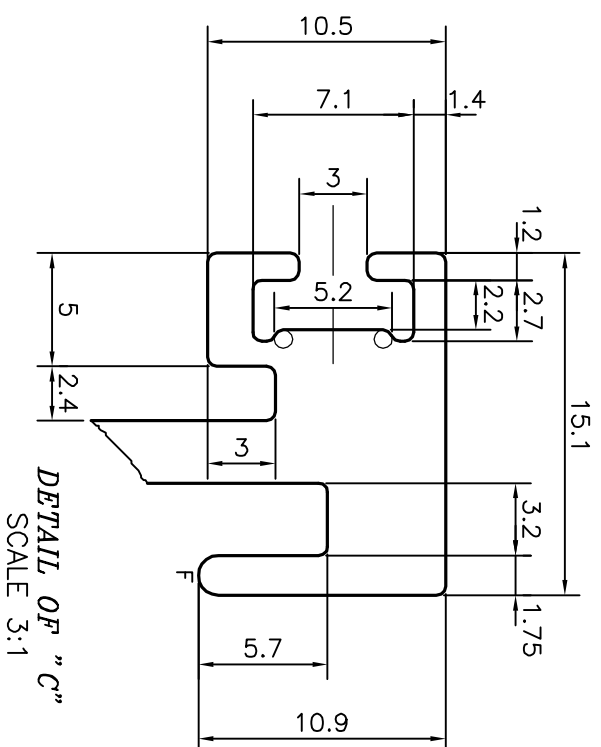
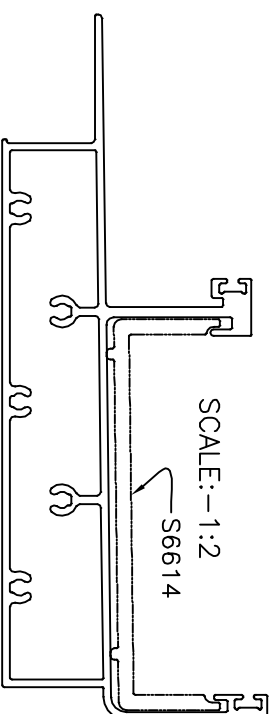


P-20738

S6790



F = FULL RADIUS (11 PLACES)
* = 1.0 RADIUS (16 PLACES)

TOLERANCES ON OVERALL DIMENSIONS OF HOLLOW SECTIONS

UPTO 20.0mm - ±0.30	UPTO 80.0mm - ±0.70	UPTO 180.0mm - ±1.27
UPTO 30.0mm - ±0.38	UPTO 100.0mm - ±0.80	UPTO 200.0mm - ±1.40
UPTO 40.0mm - ±0.45	UPTO 120.0mm - ±0.90	UPTO 225.0mm - ±1.52
UPTO 50.0mm - ±0.52	UPTO 140.0mm - ±1.00	
UPTO 60.0mm - ±0.60	UPTO 160.0mm - ±1.14	

<p>JINDAL SYMBOL OF QUALITY AN ISO 9001 COMPANY</p>		<p>JINDAL ALUMINIUM LTD. BANGALORE-560073 (INDIA)</p>	
<p>1. ALL DIMENSIONS ARE IN mm. 2. ROUND OFF ALL SHARP CORNERS WITH 0.40 mm. 3. TOLERANCES WILL BE AS PER IS:6477-1983, UNLESS OTHERWISE SPECIFIED</p>		<p>1. STRAIGHTNESS=1.7mm/M 2. TWIST=1.7mm/M 3. ANGULARITY= ±2° 4. FLATNESS =0.006xWIDTH</p>	
PARTY'S NAME	MARVEL TOUCH ALUMINIUM PVT. LTD., NAVI MUMBAI	DRAWN	I.P.KAUSHIK
PARTY'S DRAWING No.	MODIFIED OF S6613	CHECKED	
ALLOY & TEMPER	6063 T6	APPROVED	B.NATARAJA
DESCRIPTION	HEAD GUTTER SECTION	SCALE	1:1
		AREA	mm ² 1230.303
		PERIMETER	mm. 667.778
		WEIGHT	kg/m 3.322
		DRAWING No.	P-20738
		SECTION No.	S6790