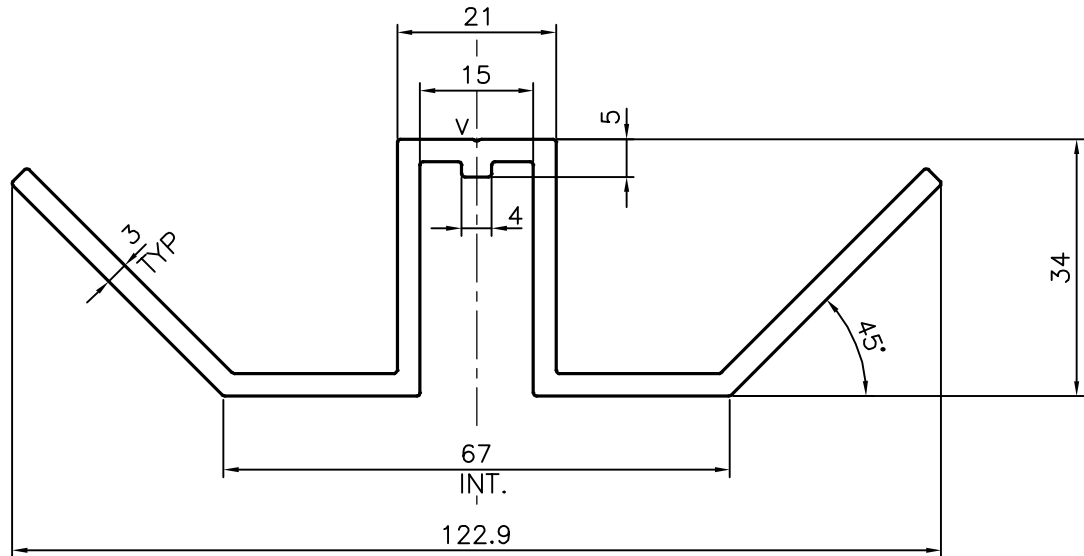


P-20798

S6811


 $V = V \text{ GROOVE } 0.3 \times 90^\circ \text{ (1 PLACE)}$

TOLERANCES ON OVERALL WIDTHS & WIDTHS ACROSS FLATS OF BARS, & REGULAR SECTIONS

UPTO 6.40mm - ± 0.20	UPTO 32.0mm - ± 0.38	UPTO 120.0mm - ± 0.85	UPTO 320.00mm - ± 1.70
UPTO 10.0mm - ± 0.23	UPTO 50.0mm - ± 0.46	UPTO 160.0mm - ± 1.02	
UPTO 12.0mm - ± 0.25	UPTO 60.0mm - ± 0.53	UPTO 200.0mm - ± 1.14	
UPTO 16.0mm - ± 0.28	UPTO 80.0mm - ± 0.69	UPTO 250.0mm - ± 1.40	
UPTO 25.0mm - ± 0.30	UPTO 100.0mm - ± 0.75	UPTO 300.0mm - ± 1.65	


 SYMBOL OF QUALITY
AN ISO 9001 COMPANY

JINDAL ALUMINIUM LTD.
BANGALORE-560073 (INDIA)

	NAME	DATE
DRAWN	J.P.KAUSHIK	20-02-2020
CHECKED		
APPROVED	B.NATARAJA	29-04-2020

- ALL DIMENSIONS ARE IN mm.
- ROUND OFF ALL SHARP CORNERS WITH 0.40 mm.
- TOLERANCES WILL BE AS PER, IS:3965-1981 UNLESS OTHERWISE SPECIFIED

SCALE	1:1
AREA mm ²	625.809
PERIMETER mm.	419.448
WEIGHT kg/m	1.690

PARTY'S NAME	AHLUWALIA CONTRACTS (INDIA) LTD., KOLKATA	DRAWING No.	P-20798	SECTION No.	-
PARTY'S DRAWING No.	AS PER DRAWING		S6811		S6811
ALLOY & TEMPER	6063 T6				
DESCRIPTION	CORNER MULLION SECTION				