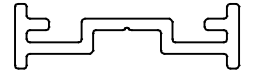
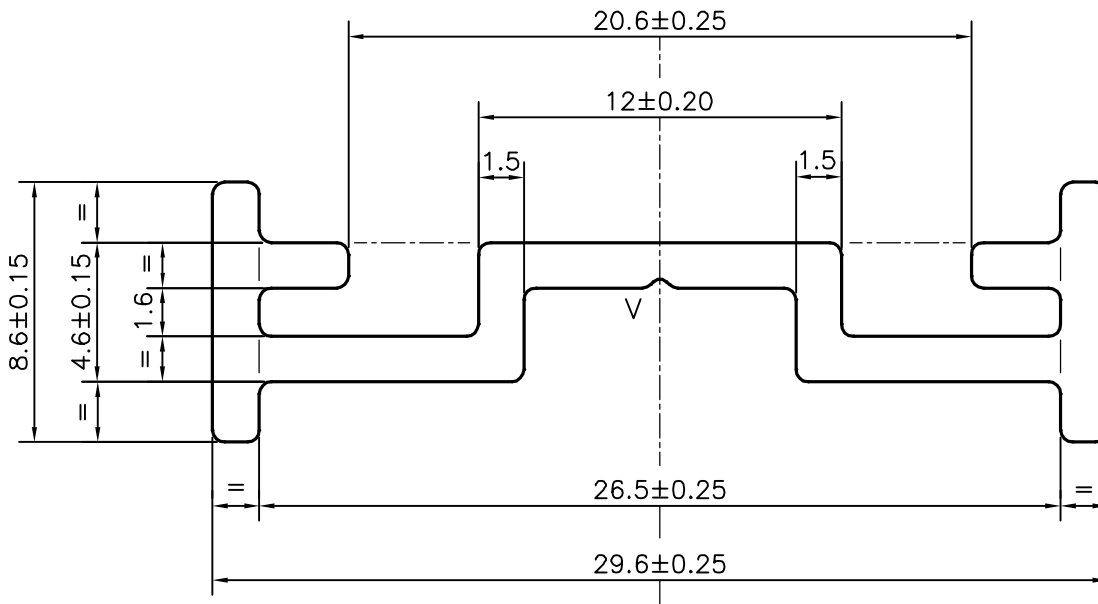


P-20859-1

S6819



1:1



V = V GROOVE 0.3x90° (1 PLACE)

TOLERANCES ON OVERALL DIMENSIONS OF HOLLOW SECTIONS

UPTO 20.0mm - ±0.30
 UPTO 30.0mm - ±0.38
 UPTO 40.0mm - ±0.45
 UPTO 50.0mm - ±0.52
 UPTO 60.0mm - ±0.60

UPTO 80.0mm - ±0.70
 UPTO 100.0mm - ±0.80
 UPTO 120.0mm - ±0.90
 UPTO 140.0mm - ±1.00
 UPTO 160.0mm - ±1.14

UPTO 180.0mm - ±1.27
 UPTO 200.0mm - ±1.40
 UPTO 225.0mm - ±1.52

1. STRAIGHTNESS=1.7mm/M
 2. TWIST=1.7mm/M
 3. ANGULARITY= ±2°
 4. FLATNESS =0.006xWIDTH



SYMBOL OF QUALITY
 AN ISO 9001 COMPANY

JINDAL ALUMINIUM LTD.
 BANGALORE-560073 (INDIA)

NAME DATE

DRAWN J.P.KAUSHIK 23-05-2020

CHECKED

APPROVED B.NATARAJA 02/06/2020

1. ALL DIMENSIONS ARE IN mm.
 2. ROUND OFF ALL SHARP CORNERS WITH 0.40 mm.
 3. TOLERANCES WILL BE AS PER IS:3965-1981 , UNLESS OTHERWISE SPECIFIED

SCALE 4:1

AREA mm² 84.255

PERIMETER mm. 110.181

WEIGHT kg/m 0.227

PARTY'S NAME LUMENS AIRCON PVT. LTD., BANGALORE

DRAWING No. SECTION No.

PARTY'S DRAWING No. AS PER SAMPLE

P-20859-1

-

ALLOY & TEMPER 6063 T6

S6819

S6819

DESCRIPTION AIR GRILL SECTION