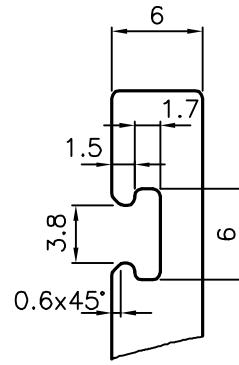
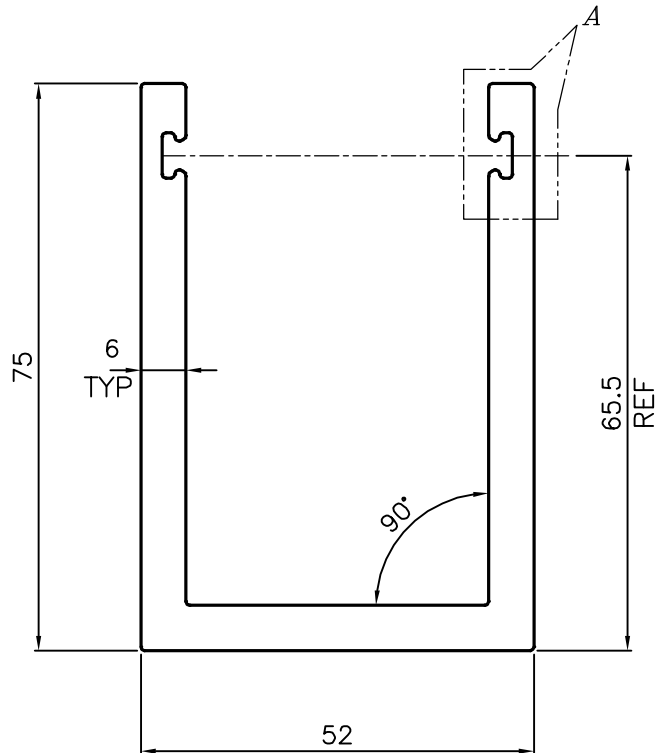


P-20913

S6820



DETAIL OF "A"
SCALE 2:1



TOLERANCES ON OVERALL WIDTHS & WIDTHS ACROSS FLATS OF BARS, & REGULAR SECTIONS

UPTO 6.40mm - ±0.20	UPTO 32.0mm - ±0.38	UPTO 120.0mm - ±0.85	UPTO 320.00mm - ±1.70
UPTO 10.0mm - ±0.23	UPTO 50.0mm - ±0.46	UPTO 160.0mm - ±1.02	
UPTO 12.0mm - ±0.25	UPTO 60.0mm - ±0.53	UPTO 200.0mm - ±1.14	
UPTO 16.0mm - ±0.28	UPTO 80.0mm - ±0.69	UPTO 250.0mm - ±1.40	
UPTO 25.0mm - ±0.30	UPTO 100.0mm - ±0.75	UPTO 300.0mm - ±1.65	



SYMBOL OF QUALITY
AN ISO 9001 COMPANY

JINDAL ALUMINIUM LTD.
BANGALORE-560073 (INDIA)

	NAME	DATE
DRAWN	J.P.KAUSHIK	02-04-2020
CHECKED		
APPROVED	B.NATARAJA	02/06/2020
SCALE		1:1
AREA mm ²		1107.437
PERIMETER mm.		407.73
WEIGHT kg/m		2.990
DRAWING No.	SECTION No.	
P-20913	-	
S6820	S6820	

1. ALL DIMENSIONS ARE IN mm.
2. ROUND OFF ALL SHARP CORNERS WITH 0.40 mm.
3. TOLERANCES WILL BE AS PER IS:3965-1981 , UNLESS OTHERWISE SPECIFIED

PARTY'S NAME: DHIPL PROJECTS PVT. LTD., JAMNAGAR

PARTY'S DRAWING No.: AS PER DRAWING-AP02

ALLOY & TEMPER: 6063 T6

DESCRIPTION: CHANNEL-MISC.