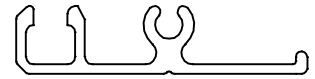


P-1613

S123

9165

X024

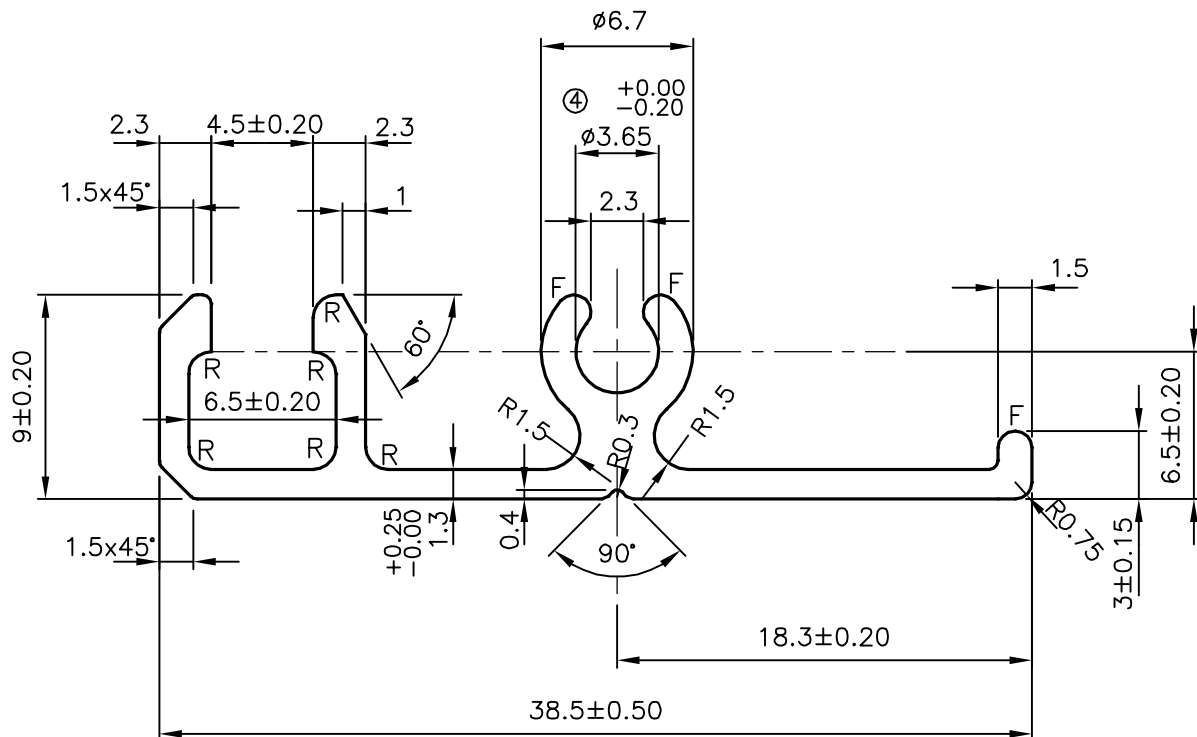


1:1

ISSUE-2 :- TOLERANCE CHANGED FROM 3.65 ± 0.15 TO $3.65^{+0.00}_{-0.25}$

ISSUE-3 :- DIMENSION CHANGED FROM $3.65^{+0.00}_{-0.25}$ TO $3.50^{+0.00}_{-0.25}$
WEIGHT INCREASED FROM 0.277 kg/m TO 0.278 kg/m.

ISSUE-4 :- DIMENSION CHANGED FROM $\phi 3.50^{+0.00}_{-0.25}$ TO $\phi 3.65^{+0.00}_{-0.20}$
WEIGHT CHANGED FROM 0.278 kg/m TO 0.277 kg/m.



ALL UNSPECIFIED WALL THICKNESS :- $1.3^{+0.25}_{-0.00}$

F = FULL RADIUS (3)

R = 1.0 RADIUS (6)



SYMBOL OF QUALITY
AN ISO 9001 COMPANY

JINDAL ALUMINIUM LTD.
BANGALORE-560073 (INDIA)

	NAME	DATE
DRAWN	PARVESH	15-05-2015
CHECKED		
APPROVED	S.S.GARG	15-05-2015
SCALE		3:1
AREA mm ²		102.414
PERIMETER mm.		136.663
WEIGHT kg/m		0.277
DRAWING No.	SECTION No.	
P-1613	-	
S123	S123	
9165	9165	
X024	X024(ISSUE-4)	

- ALL DIMENSIONS ARE IN mm.
- ROUND OFF ALL SHARP CORNERS WITH 0.40 mm.
- TOLERANCES WILL BE AS PER IS:3965-1981 UNLESS OTHERWISE SPECIFIED

PARTY'S NAME TATA B P SOLAR INDIA LTD., BANGALORE

PARTY'S DRAWING No. T001467

ALLOY & TEMPER HE9 'P'

DESCRIPTION SOLAR SECTION