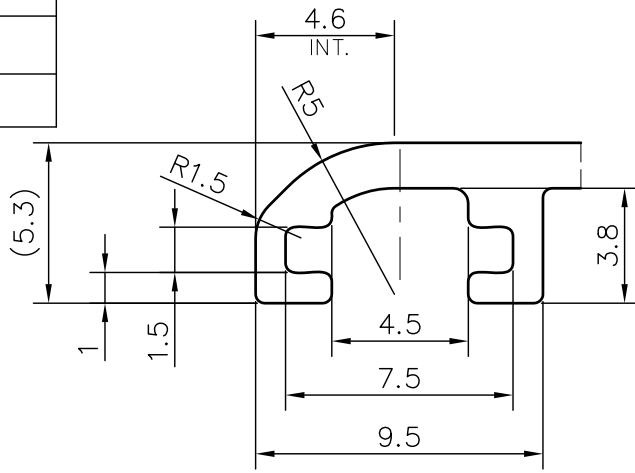
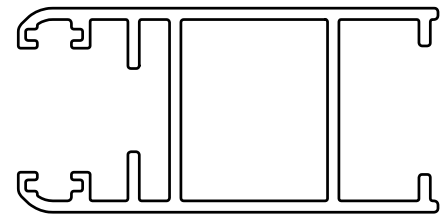


P-JAL-B-227-2

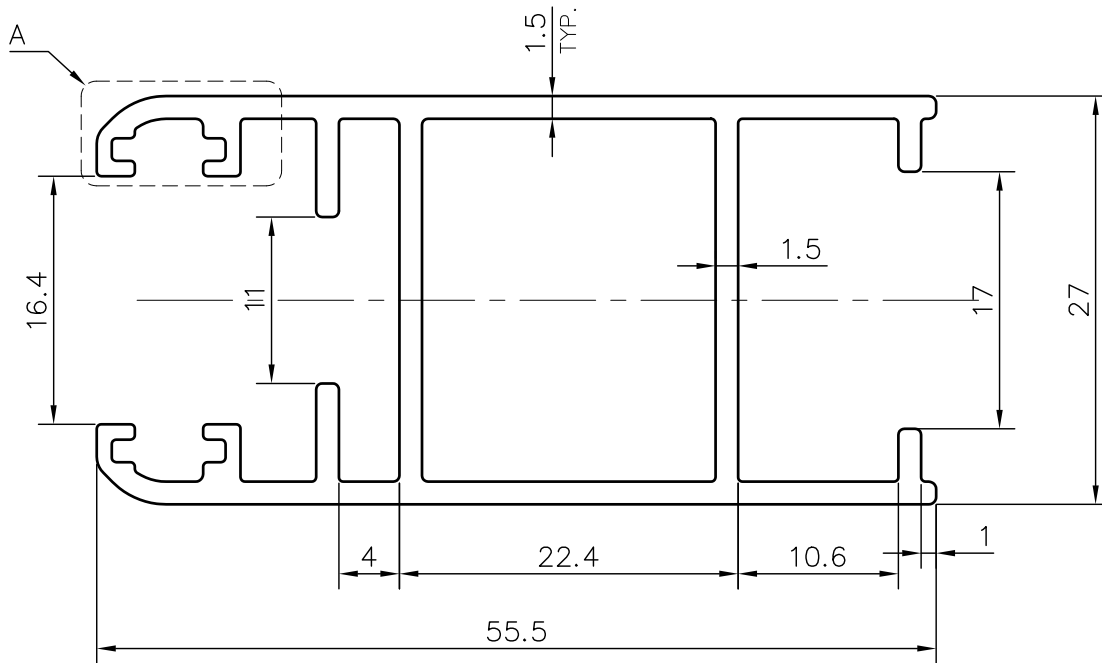
X101335



DETAIL A
SCALE 4:1



SCALE 1:1



1. STRAIGHTNESS= 1.7mm/M
2. TWIST= 1.7mm/M
3. ANGULARITY= $\pm 2^\circ$
4. FLATNESS= 0.007xWIDTH

(Q00698)



SYMBOL OF QUALITY
AN ISO 9001 COMPANY

JINDAL ALUMINIUM LTD.
BHIWADI-301019 (INDIA)

	NAME	DATE
DRAWN	ASHUTOSH	23-06-2023
CHECKED	PARVESH	11-08-2023
APPROVED	J.N. RAI	11-08-2023
SCALE		2:1
AREA mm ²		290.81
PERIMETER mm.		301.32
WEIGHT kg/m		0.785
DRAWING No.		SECTION No.
P-JAL-B-227-2		7000001478
X101335		X101335

1. ALL DIMENSIONS ARE IN mm.
2. ROUND OFF ALL SHARP CORNERS WITH 0.40 mm.
3. TOLERANCES WILL BE AS PER BS:EN-755-9 , UNLESS OTHERWISE SPECIFIED

PARTY'S NAME	M/s. RG FACADE SOLUTIONS, GHAZIABAD	
PARTY'S DRAWING No.	AS PER DRAWING	
ALLOY & TEMPER	6063 T6	PRODUCT CODE: -048
		HSN CODE: - 76042100
DESCRIPTION	WINDOW SECTION	