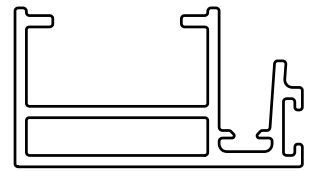
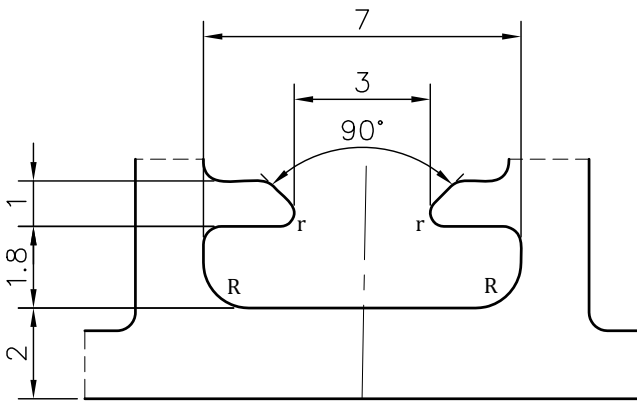
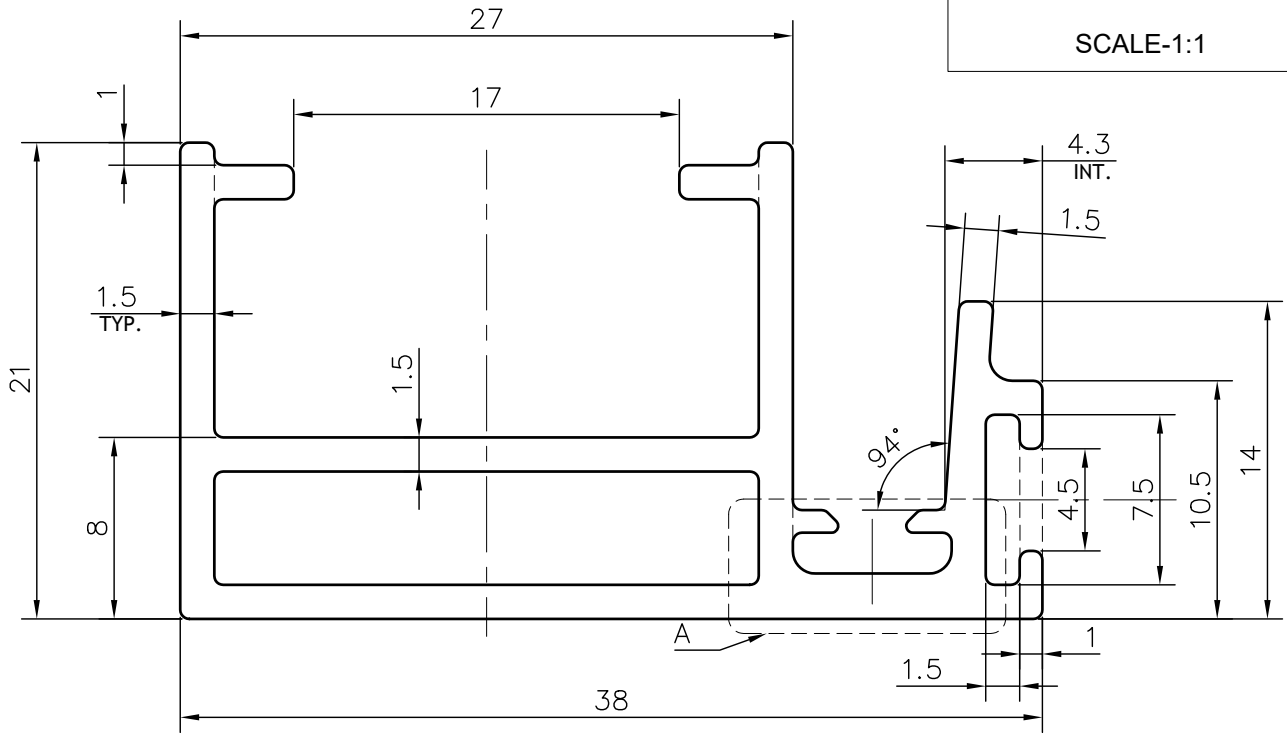


P-JAL-B-249

X101337



SCALE-1:1



DETAIL-A  
SCALE 6:1

**NOTE:-**

**r= 0.30 RADIUS (2 PLACES)**

**R= 1.0 RADIUS (2 PLACES)**

1. STRAIGHTNESS= 1.7mm/M
2. TWIST= 1.7mm/M
3. ANGULARITY= ±2°
4. FLATNESS= 0.007xWIDTH

(Q00719)



SYMBOL OF QUALITY  
AN ISO 9001 COMPANY

**JINDAL ALUMINIUM LTD.**  
BHIWADI-301019 (INDIA)

	NAME	DATE
DRAWN	ASHUTOSH	13-06-2023
CHECKED	PARVESH	11-09-2023
APPROVED	J.N. RAI	11-09-2023
SCALE		3:1
AREA mm <sup>2</sup>		195.92
PERIMETER mm.		192.98
WEIGHT kg/m		0.530
DRAWING No.	SECTION No.	
P-JAL-B-249	7000001480	
X101337	X101337	

1. ALL DIMENSIONS ARE IN mm.
2. ROUND OFF ALL SHARP CORNERS WITH 0.40 mm.
3. TOLERANCES WILL BE AS PER BS:EN-755-9 , UNLESS OTHERWISE SPECIFIED

PARTY'S NAME	RG FACADE SOLUTIONS	
PARTY'S DRAWING No.	AS PER DRAWING	
ALLOY & TEMPER	6063-T6	PRODUCT CODE: -048
		HSN CODE: - 76042100
DESCRIPTION	WINDOW SECTION	