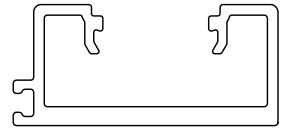
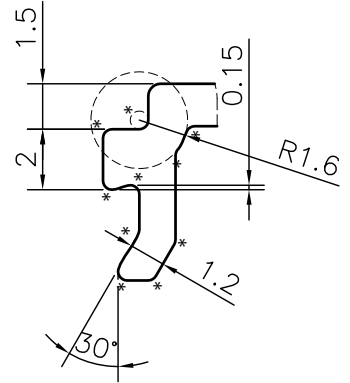
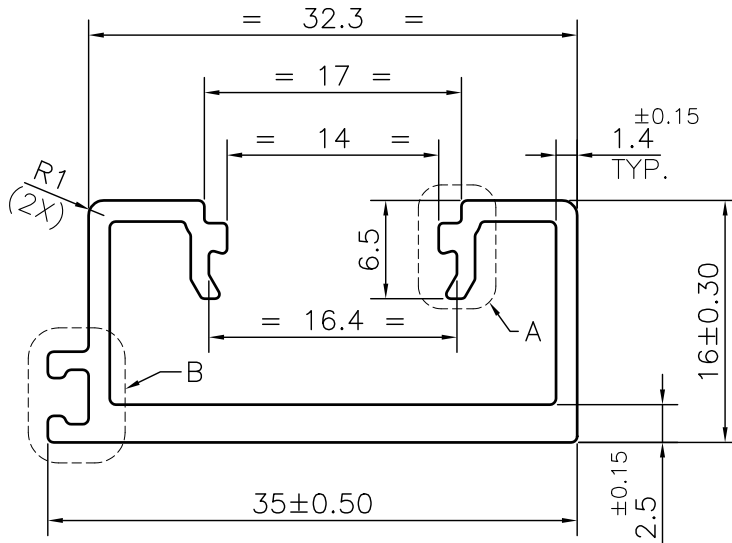


P-JAL-B-360

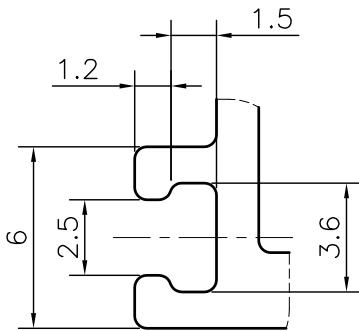
X101694



SCALE 1:1



DETAIL A
SCALE 4:1



DETAIL B
SCALE 4:1

NOTE:-

***= 0.30 RADIUS (20 PLACES)**

1. STRAIGHTNESS= 1.7mm/M
2. TWIST= 1.7mm/M
3. ANGULARITY= ±2°
4. FLATNESS= 0.007xWIDTH

Q00999

CONTROLLED COPY



SYMBOL OF QUALITY
AN ISO 9001 COMPANY

JINDAL ALUMINIUM LTD.
BHIWADI-301019 (INDIA)

	NAME	DATE
DRAWN	ASHUTOSH	02-11-2023
CHECKED	PARVESH	12-12-2023
APPROVED	J.N.RAI	12-12-2023
SCALE		2:1
AREA	mm ²	161.044
PERIMETER	mm.	183.03
WEIGHT	kg/m	0.435
DRAWING No.		SECTION No.
P-JAL-B-360		7000001840
X101694		X101694

1. ALL DIMENSIONS ARE IN mm.
2. ROUND OFF ALL SHARP CORNERS WITH 0.40 mm.
3. TOLERANCES WILL BE AS PER BS:EN-755-9, UNLESS OTHERWISE SPECIFIED

PARTY'S NAME	INTERIOR OPTIONS, NEW DELHI	
PARTY'S DRAWING No.	AS PER PROPOSAL	
ALLOY & TEMPER	6063 T6	PRODUCT CODE:-048
		HSN CODE:- 76042990
DESCRIPTION	WINDOW SECTION	