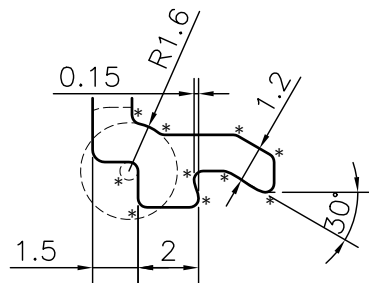
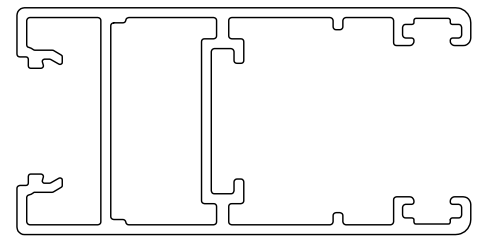


P-JAL-B-359-2

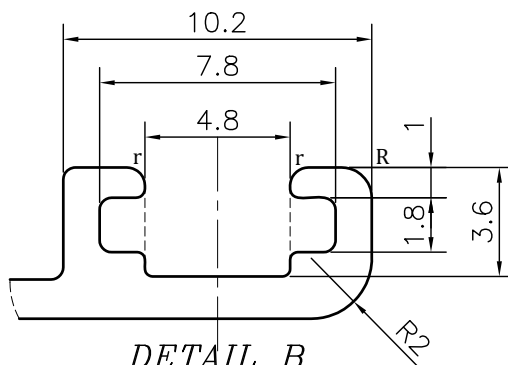
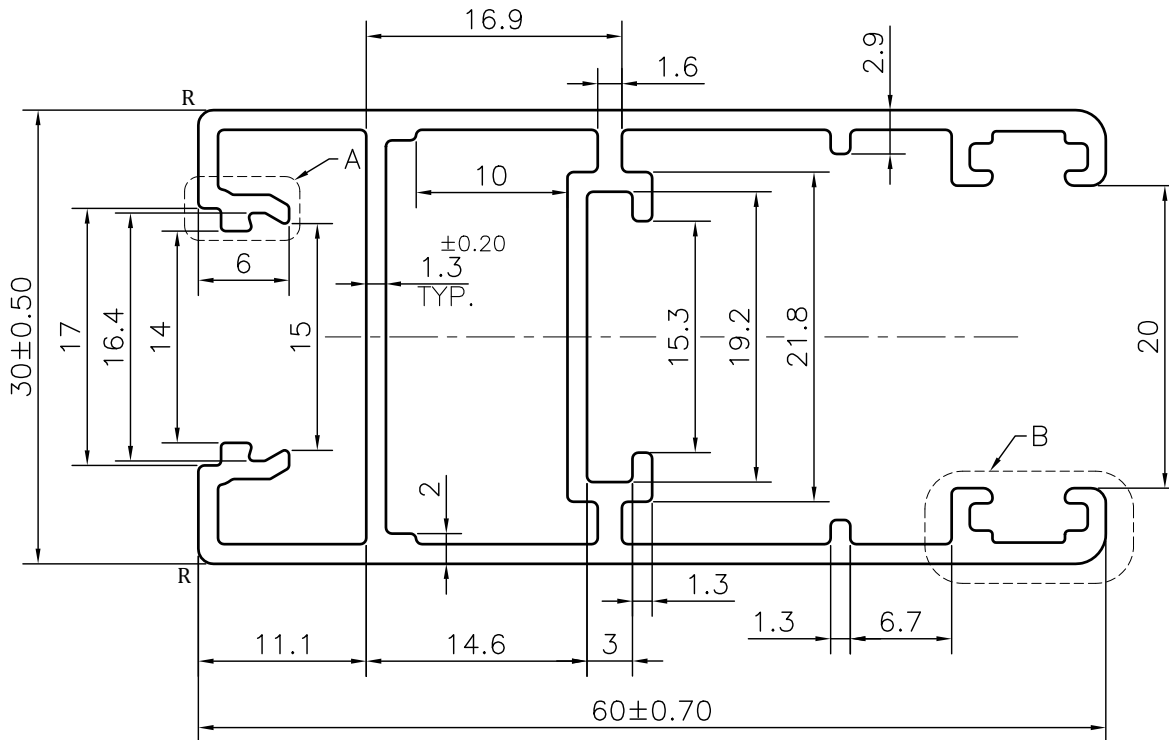
X101696



DETAIL A  
SCALE 4:1



SCALE 1:1



DETAIL B  
SCALE 4:1

**NOTE:-**

- \*= 0.30 RADIUS (20 PLACES)
- r= 0.60 RADIUS (4 PLACES)
- R= 1.0 RADIUS (4 PLACES)

1. STRAIGHTNESS= 1.7mm/M
2. TWIST= 1.7mm/M
3. ANGULARITY= ±2°
4. FLATNESS= 0.007xWIDTH

Q00998

CONTROLLED COPY



SYMBOL OF QUALITY  
AN ISO 9001 COMPANY

**JINDAL ALUMINIUM LTD.**  
BHIWADI-301019 (INDIA)

	NAME	DATE
DRAWN	ASHUTOSH	28-11-2023
CHECKED	PARVESH	12-12-2023
APPROVED	J.N.RAI	12-12-2023
SCALE		2:1
AREA mm <sup>2</sup>		312.463
PERIMETER mm.		365.206
WEIGHT kg/m		0.844
DRAWING No.	SECTION No.	
P-JAL-B-359-2	7000001862	
X101696	X101696	

1. ALL DIMENSIONS ARE IN mm.
2. ROUND OFF ALL SHARP CORNERS WITH 0.40 mm.
3. TOLERANCES WILL BE AS PER BS:EN-755-9 , UNLESS OTHERWISE SPECIFIED

PARTY'S NAME	INTERIOR OPTIONS, NEW DELHI	
PARTY'S DRAWING No.	AS PER PROPOSAL	
ALLOY & TEMPER	6063 T6	PRODUCT CODE:-048
		HSN CODE:- 76042100
DESCRIPTION	WINDOW SECTION	