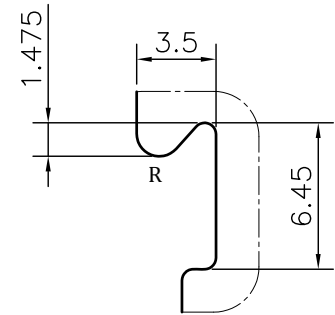
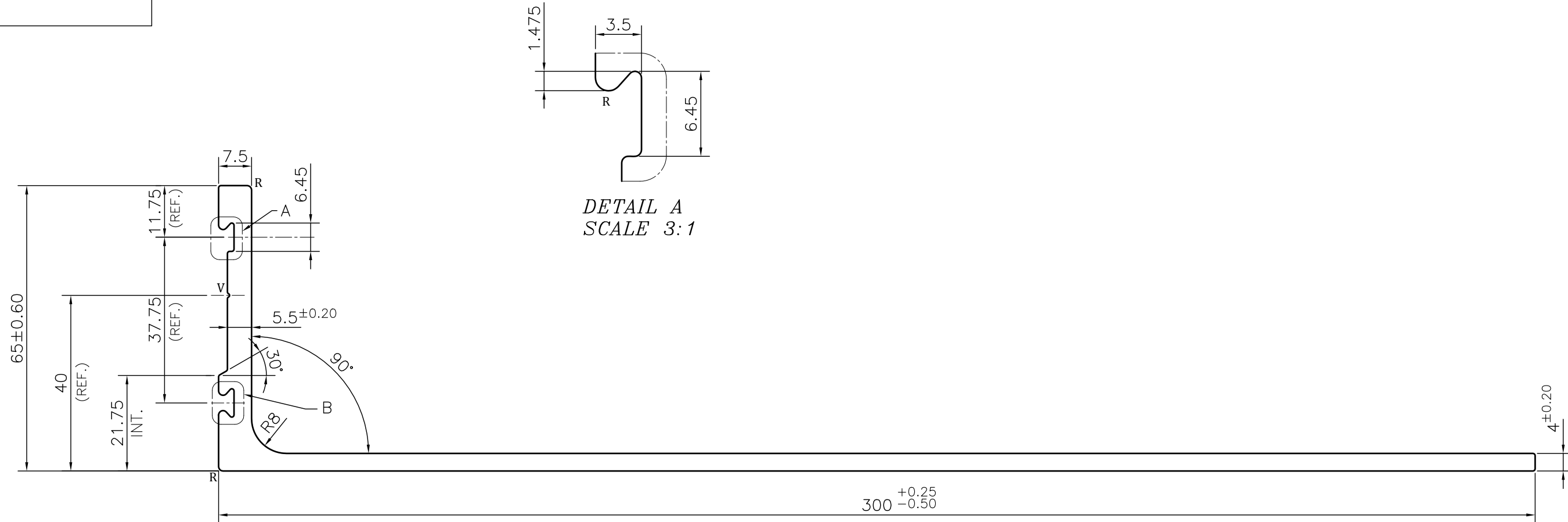
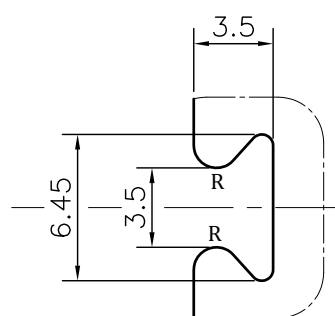


P-JAL-B-556-1

X102370



DETAIL A
SCALE 3:1



DETAIL B
SCALE 3:1

NOTE:-

- ☞ ROUND OFF ALL SHARP CORNERS WITH 0.50 mm.
- ☞ FE:- NOT MORE THAN 0.4%, MG:- 0.8 TO 1.2%
- ☞ HARDNESS :- 56HRB
- ☞ UTS :- 280 TO 300 MIN MPA

NOTE:-

- R= 1.0 RADIUS (5 PLACES)**
- V= 0.5x60° V-GROOVE (1 PLACE)**

1. STRAIGHTNESS= 1.0mm/M
2. TWIST= 1.0mm/M
3. ANGULARITY= ±1°
4. FLATNESS= ±0.50mm

Q01937

CONTROLLED COPY

 SYMBOL OF QUALITY AN ISO 9001 COMPANY	JINDAL ALUMINIUM LTD. BHIWADI-301019 (INDIA)	NAME	DATE
		DRAWN	ASHUTOSH 01-06-2024
1. ALL DIMENSIONS ARE IN mm. 2. ROUND OFF ALL SHARP CORNERS WITH 0.50 mm. 3. TOLERANCES WILL BE AS PER EN 12020-2, UNLESS OTHERWISE SPECIFIED		CHECKED	PARVESH 15-06-2024
		APPROVED	N.K.HOLEY 15-06-2024
PARTY'S NAME KNEST MANUFACTURERS LLP, PUNE		SCALE	1:1
		AREA mm ²	1578.513
PARTY'S DRAWING No. AS PER DRAWING		PERIMETER mm.	742.29
		WEIGHT kg/m	4.262
ALLOY & TEMPER 6061 T6		DRAWING No.	SECTION No.
		P-JAL-B-556-1	7000002537
DESCRIPTION FORM WORK SECTION- 300 L PROFILE		X102370	X102370
		PRODUCT CODE:-029	
		HSN CODE:- 76042990	