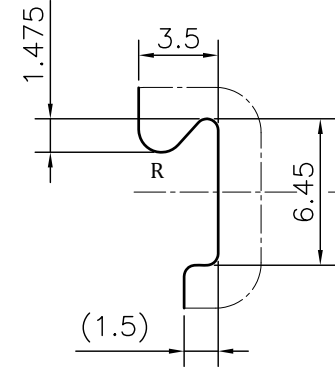
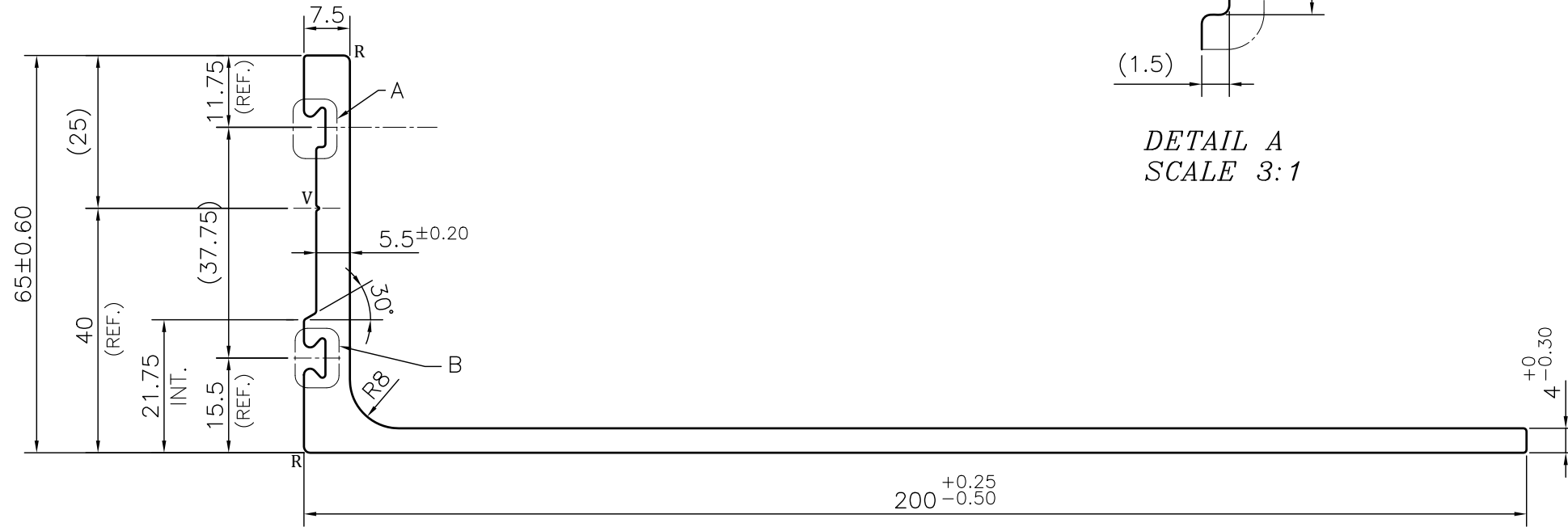
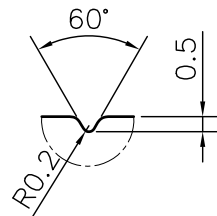


P-JAL-B-583-2

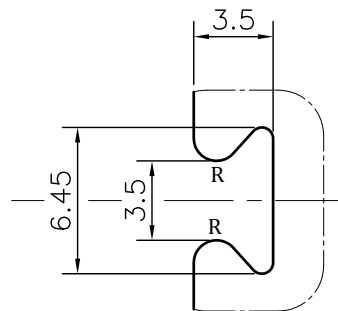
X102451



DETAIL A
SCALE 3:1



DETAIL V
SCALE 4:1



DETAIL B
SCALE 3:1

NOTE:-

- ☞ ROUND OFF ALL SHARP CORNERS WITH 0.50 mm.
- ☞ FE:- NOT MORE THAN 0.4%, MG:- 0.8 TO 1.2%
- ☞ HARDNESS :- 56HRB
- ☞ UTS :- 280 TO 300 MIN MPA

NOTE:-

- R= 1.0 RADIUS (5 PLACES)**
- V= 0.5x60° V-GROOVE (1 PLACE)**

1. STRAIGHTNESS= 1.0mm/M
2. TWIST= 1.0mm/M
3. ANGULARITY= ±1°
4. FLATNESS= ±0.50mm

Q01985

CONTROLLED COPY

 SYMBOL OF QUALITY AN ISO 9001 COMPANY	JINDAL ALUMINIUM LTD. BHIWADI-301019 (INDIA)	NAME	DATE
		DRAWN	ASHUTOSH 13-06-2024
1. ALL DIMENSIONS ARE IN mm. 2. ROUND OFF ALL SHARP CORNERS WITH 0.50 mm. 3. TOLERANCES WILL BE AS PER EN 12020-2, UNLESS OTHERWISE SPECIFIED		CHECKED	PARVESH 04-07-2024
		APPROVED	N.K.HOLEY 04-07-2024
PARTY'S NAME		KNEST MANUFACTURERS LLP, PUNE	
PARTY'S DRAWING No.		AS PER DRAWING	
ALLOY & TEMPER		6061 T6	PRODUCT CODE:-029 HSN CODE:- 76042990
DESCRIPTION		FORM WORK SECTION- 200 L PROFILE	
SCALE		1:1	
AREA mm ²		1178.626	
PERIMETER mm.		542.35	
WEIGHT kg/m		3.182	
DRAWING No.		SECTION No.	
P-JAL-B-583-2		7000002619	
X102451		X102451	