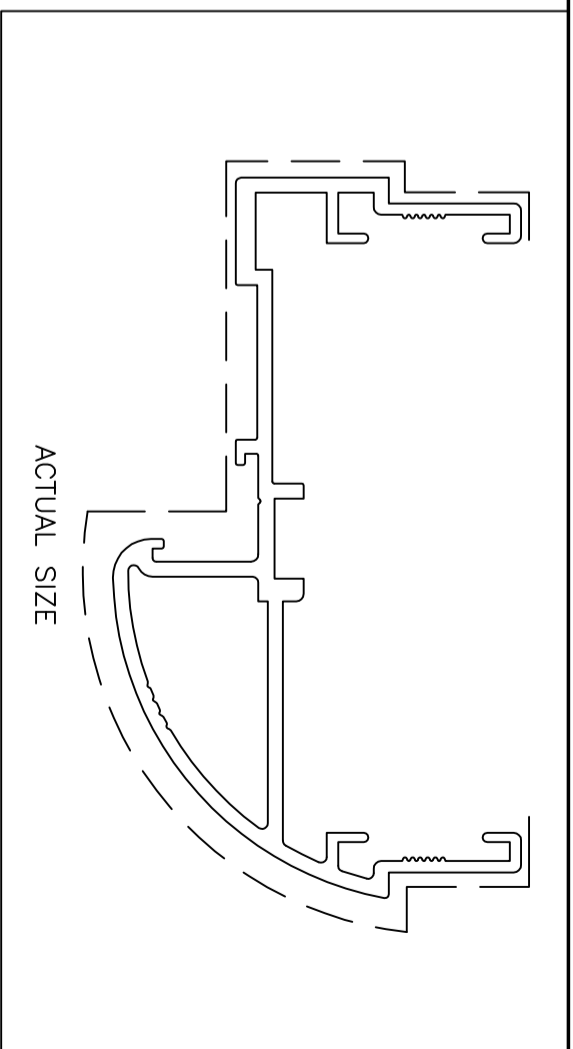
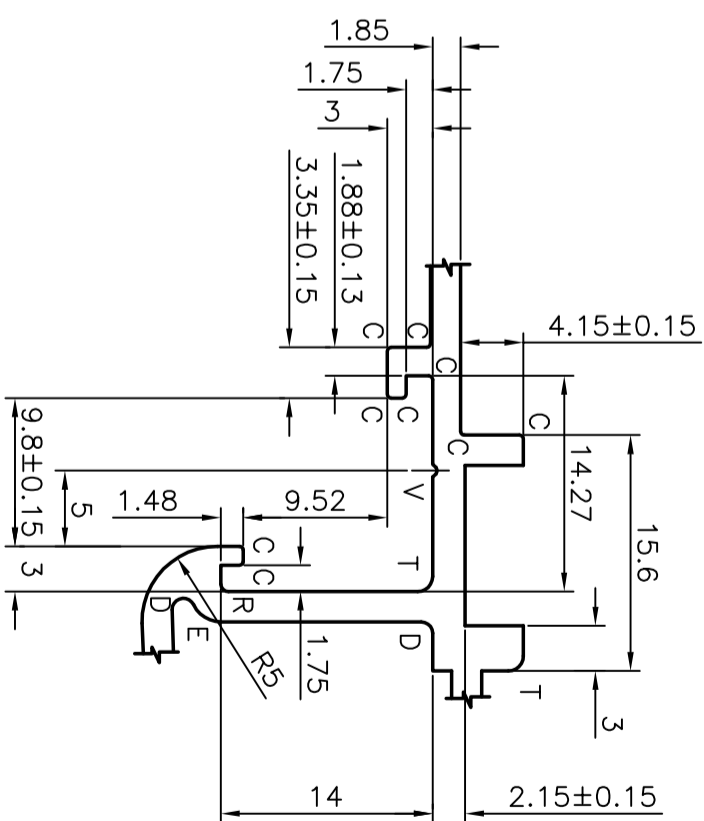
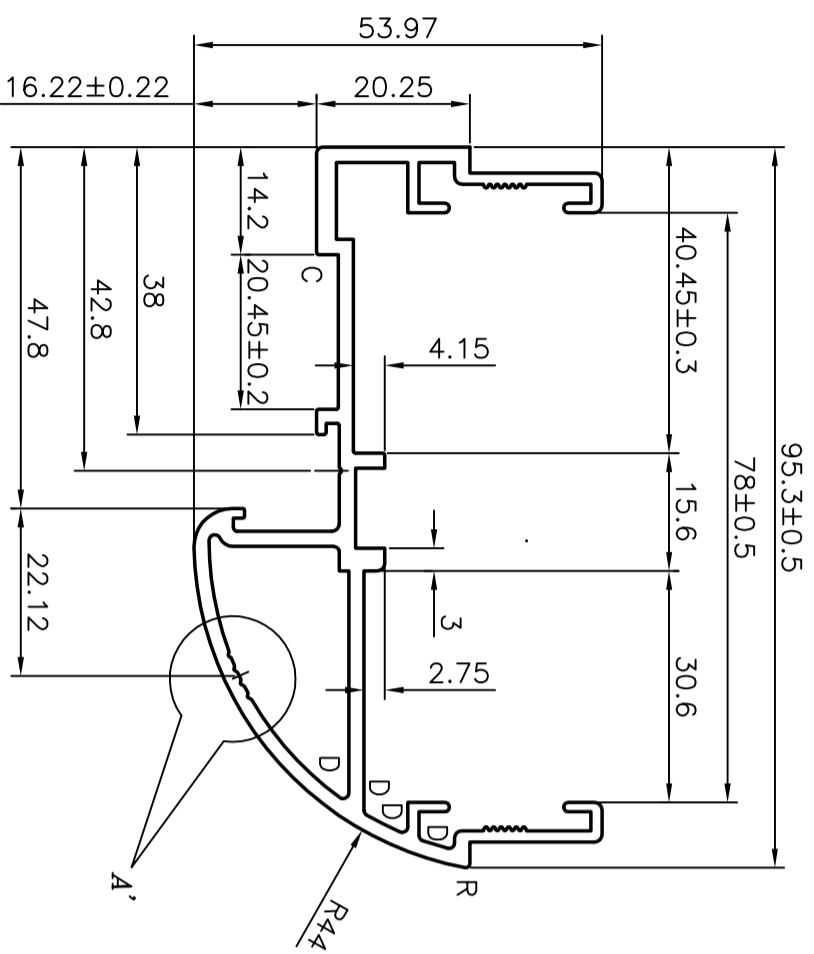
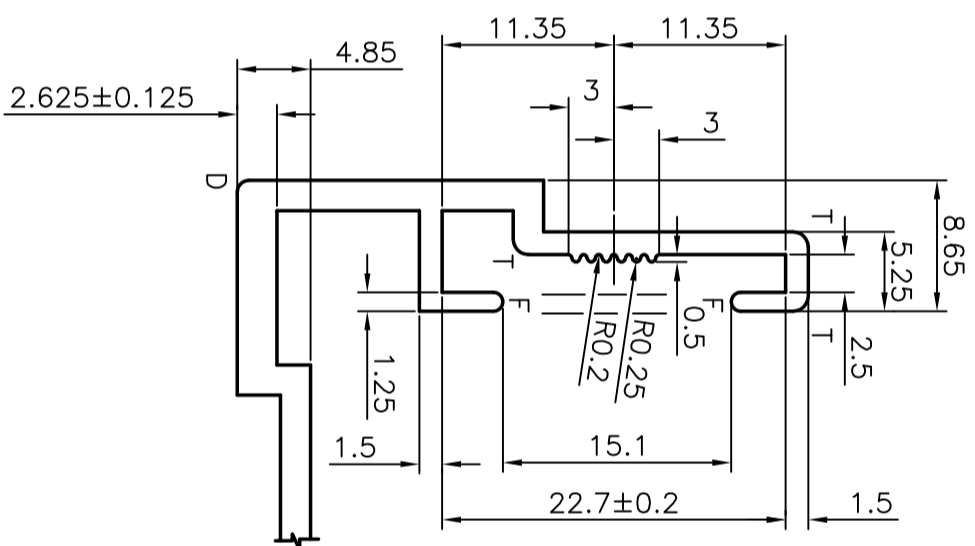
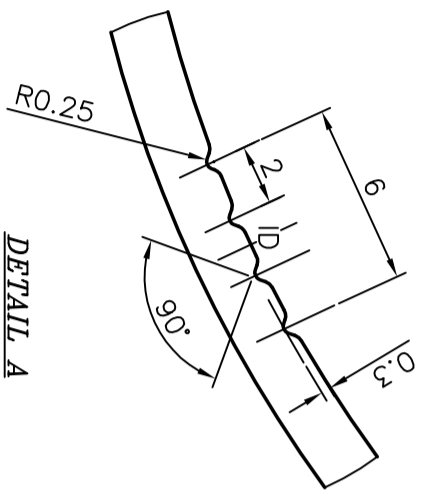


P-4337-1
19010
21020
X1114

C	0.25 RAD
D	0.75 RAD
E	2.0 RAD
F	FULL RAD
R	0.5 RAD
T	1.0 RAD



V = VEE GROOVE 0.5 DEEP x90°
 UNSTATED THICKNESS 2.0MM
 --- VISIBLE FACES

 SYMBOL OF QUALITY AN ISO 9002 COMPANY	JINDAL ALUMINIUM LTD. BANGALORE-560073 (INDIA)		NAME	DATE
	1. ALL DIMENSIONS ARE IN mm. 2. ROUND OFF ALL SHARP CORNERS WITH 0.40 mm. 3. TOLERANCES WILL BE AS PER BS: 1474-1987 UNLESS OTHERWISE SPECIFIED		DRAWN	MALINGAPPA 01.12.2003
PARTY'S NAME	KOMFORT OFFICE ENVIRONMENTS PLC		CHECKED	
PARTY'S DRAWING No.	D4/CPDF6		APPROVED	
ALLOY & TEMPER	6063-T6		SCALE	1:1/2:1
DESCRIPTION	RADIUS DOOR FRAME		AREA mm ²	531.67
			PERIMETER mm.	458.61
			WEIGHT kg/m	1.435
			DRAWING No.	SECTION No.
			P-4337-1	
			19010	19010
			21020	21020
			X1114	X1114