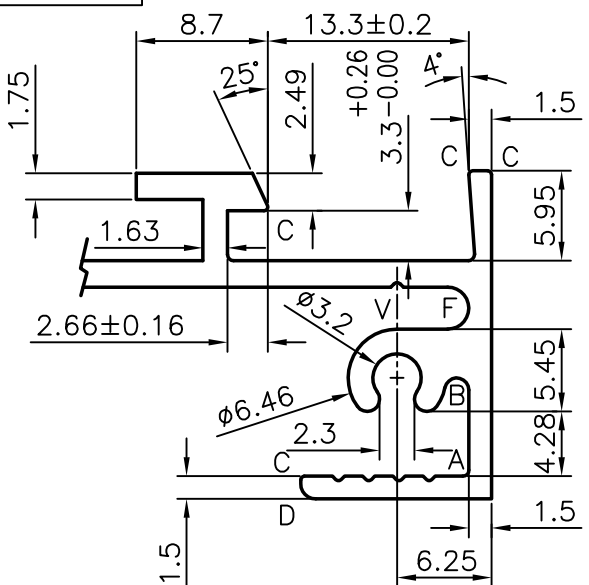
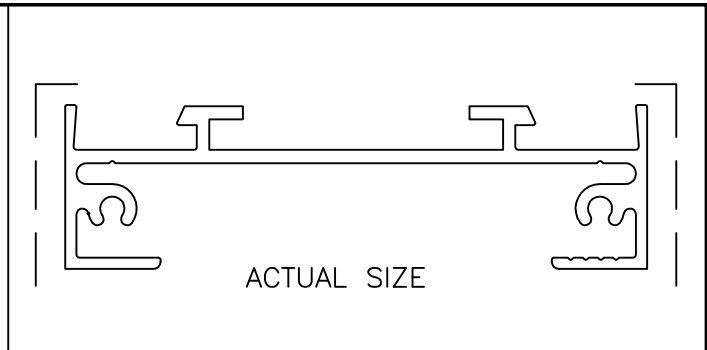
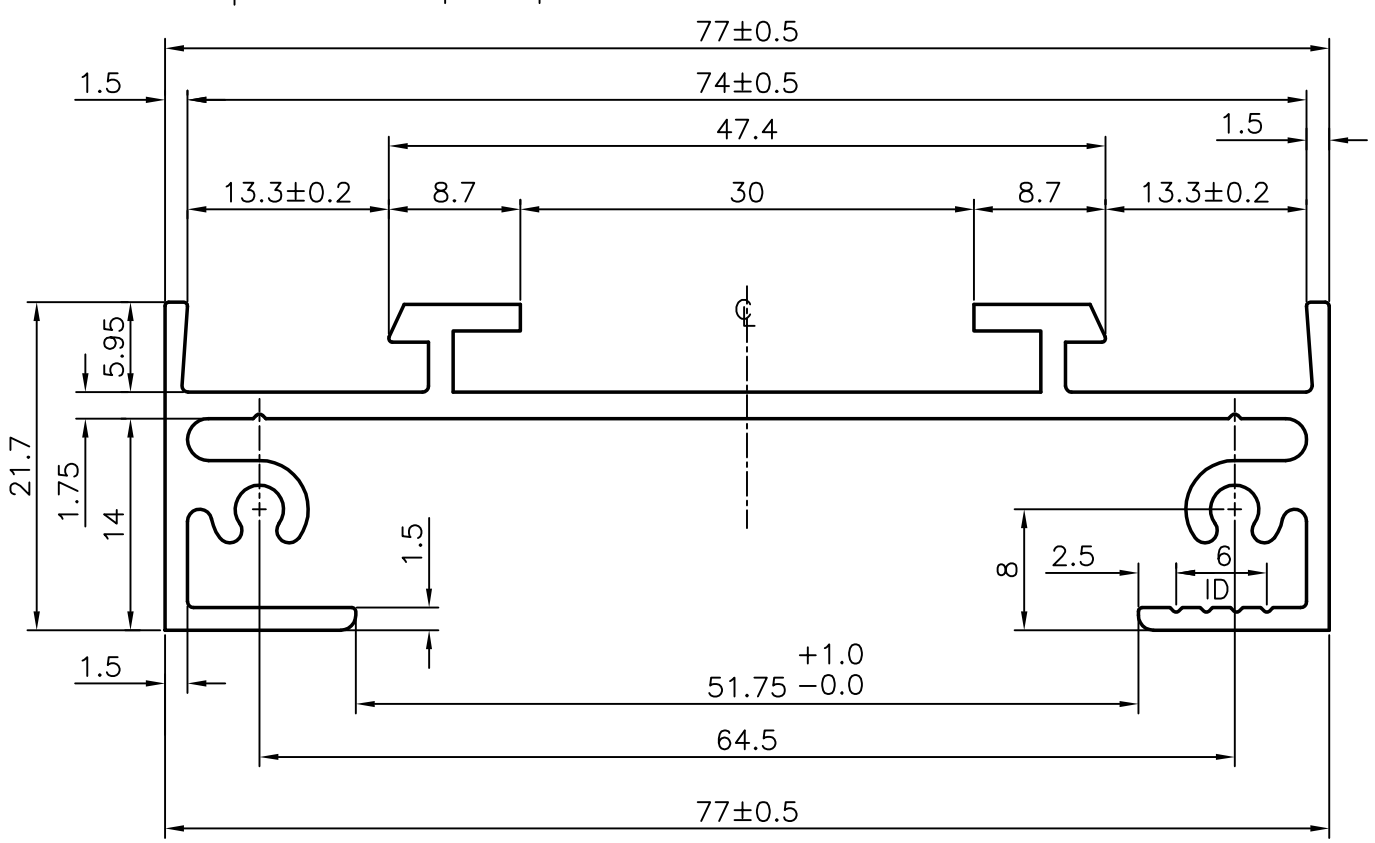
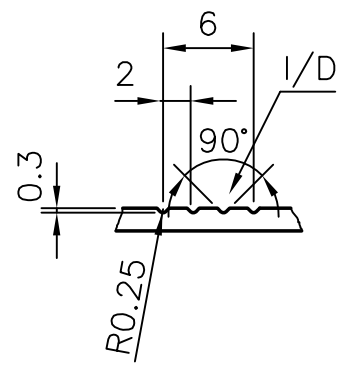


P-4332-1  
 19011  
 21021  
 X1115



A=RAD 0.75  
 B=RAD 0.8  
 C=RAD 0.25  
 D=RAD 1.0  
 V=GROOVE 0.3x90°  
 V=GROOVE 0.3x90°  
 --- =VISIBLE FACES



**JINDAL ALUMINIUM LTD.**  
 BANGALORE-560073 (INDIA)

	NAME	DATE
DRAWN	MALINGAPPA	23.07.2003
CHECKED		
APPROVED		
SCALE		1:1/2:1
AREA mm <sup>2</sup>		325.46
PERIMETER mm.		375
WEIGHT kg/m		0.878
DRAWING No.	SECTION No.	
P-4332-1	-	
19011	19011	
21021	21021	
X1115	X1115	

1. ALL DIMENSIONS ARE IN mm. 2. ROUND OFF ALL SHARP CORNERS WITH 0.40 mm. 3. TOLERANCES WILL BE AS PER BS: 1474-1987 UNLESS OTHERWISE SPECIFIED	
PARTY'S NAME	KOMFORT OFFICE ENVIRONMENTS PLC UNITED KINGDOM
PARTY'S DRAWING No.	D3/TF340
ALLOY & TEMPER	6063-T6
DESCRIPTION	77mm VERTICAL/DG