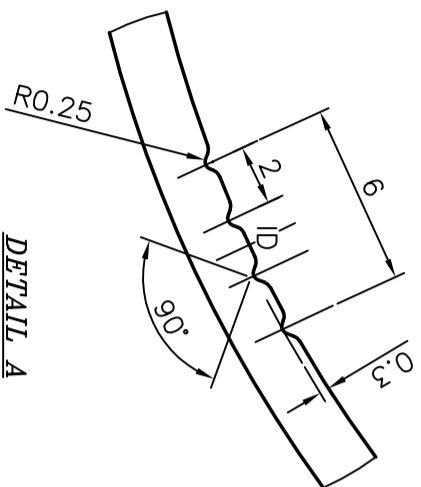
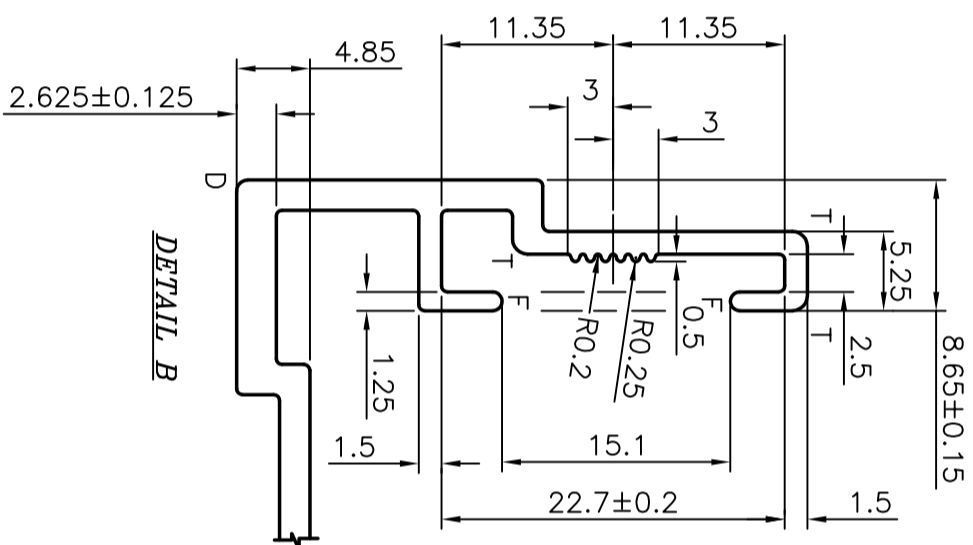


P-4336
19013
21023
X1116

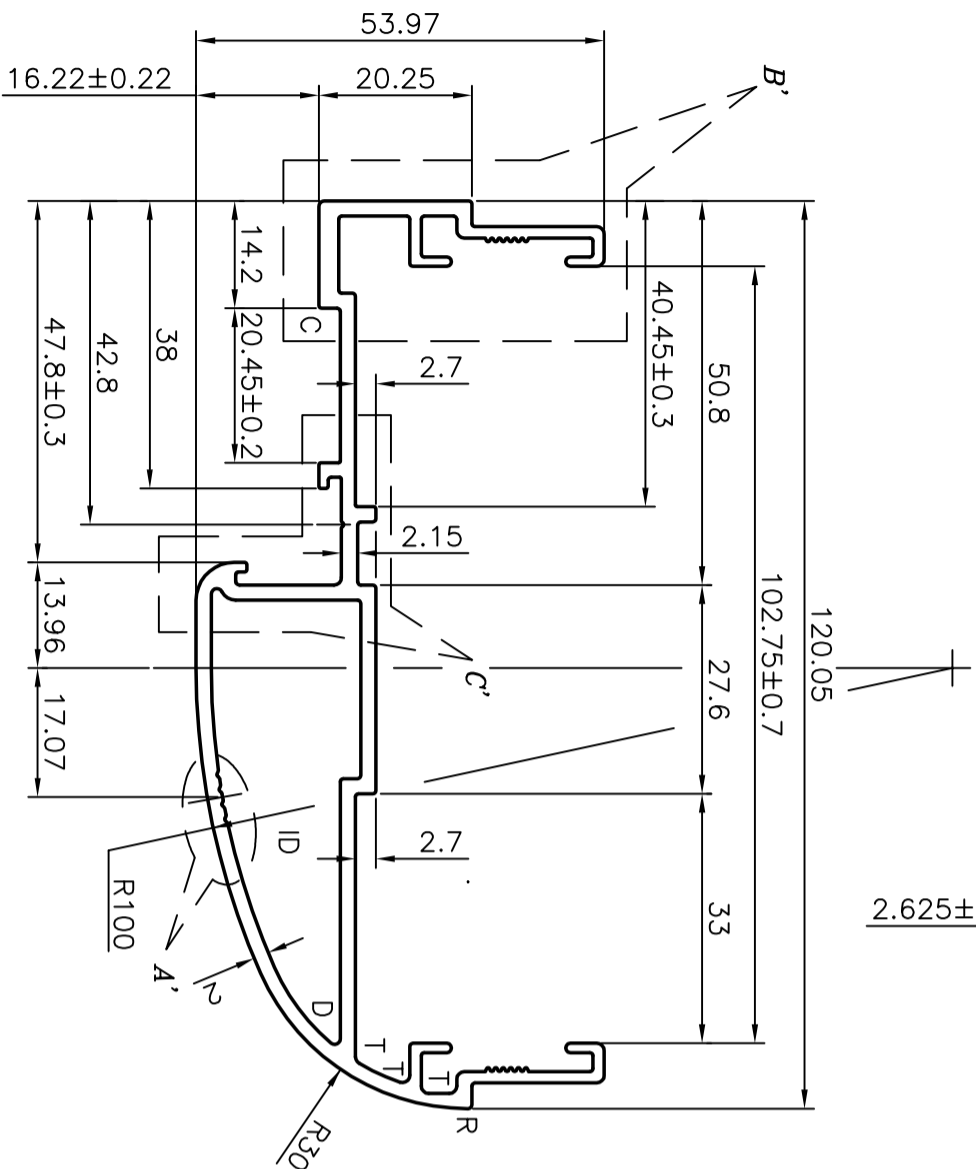


DETAIL A

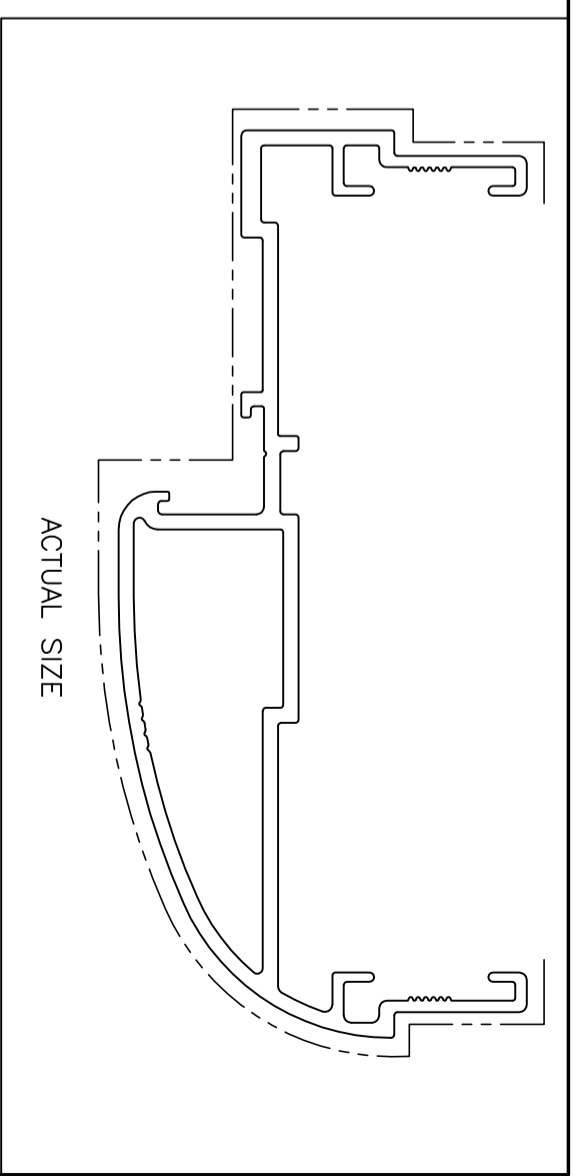
C	0.25 RAD
D	0.75 RAD
E	2.0 RAD
F	FULL RAD
R	0.5 RAD
T	1.0 RAD



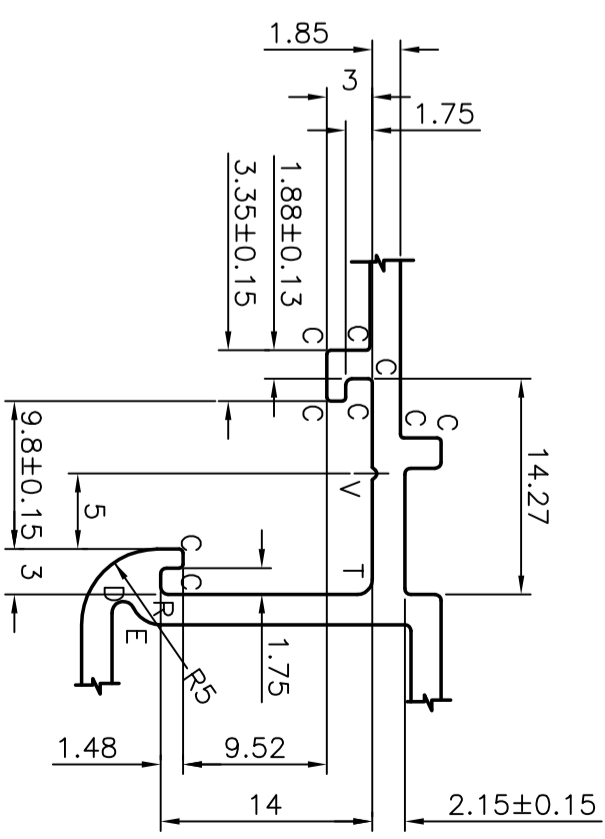
DETAIL B




V = VEE GROOVE 0.5 DEEP x90°
UNSTATED THICKNESS 2.0MM
--- VISIBLE FACES



ACTUAL SIZE



DETAIL C

 SYMBOL OF QUALITY AN ISO 9002 COMPANY		JINDAL ALUMINIUM LTD. BANGALORE-560073 (INDIA)		DRAWN	NAME	DATE
				CHECKED	MALINGAPPA	10.12.2003
1. ALL DIMENSIONS ARE IN mm. 2. ROUND OFF ALL SHARP CORNERS WITH 0.40 mm. 3. TOLERANCES WILL BE AS PER BS: 1474-1987 UNLESS OTHERWISE SPECIFIED		PARTY'S NAME KOMFORT OFFICE ENVIRONMENTS PLC UNITED KINGDOM		APPROVED		
				SCALE	1:1 & 2:1	
PARTY'S DRAWING No. D4/CPDF7		AREA mm ² 629.48		WEIGHT kg/m		1.699
				PERIMETER mm.		509.48
ALLOY & TEMPER 6063-T6		DESCRIPTION WIDE RADIUS DOOR FRAME		DRAWING No.		SECTION No.
				P-4336		-
				DRAWING No.		SECTION No.
				19013		19013
				DRAWING No.		SECTION No.
				21023		21023
				DRAWING No.		SECTION No.
				X1116		X1116