

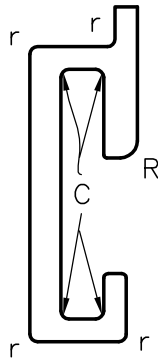
P-4575-2

19017

21027

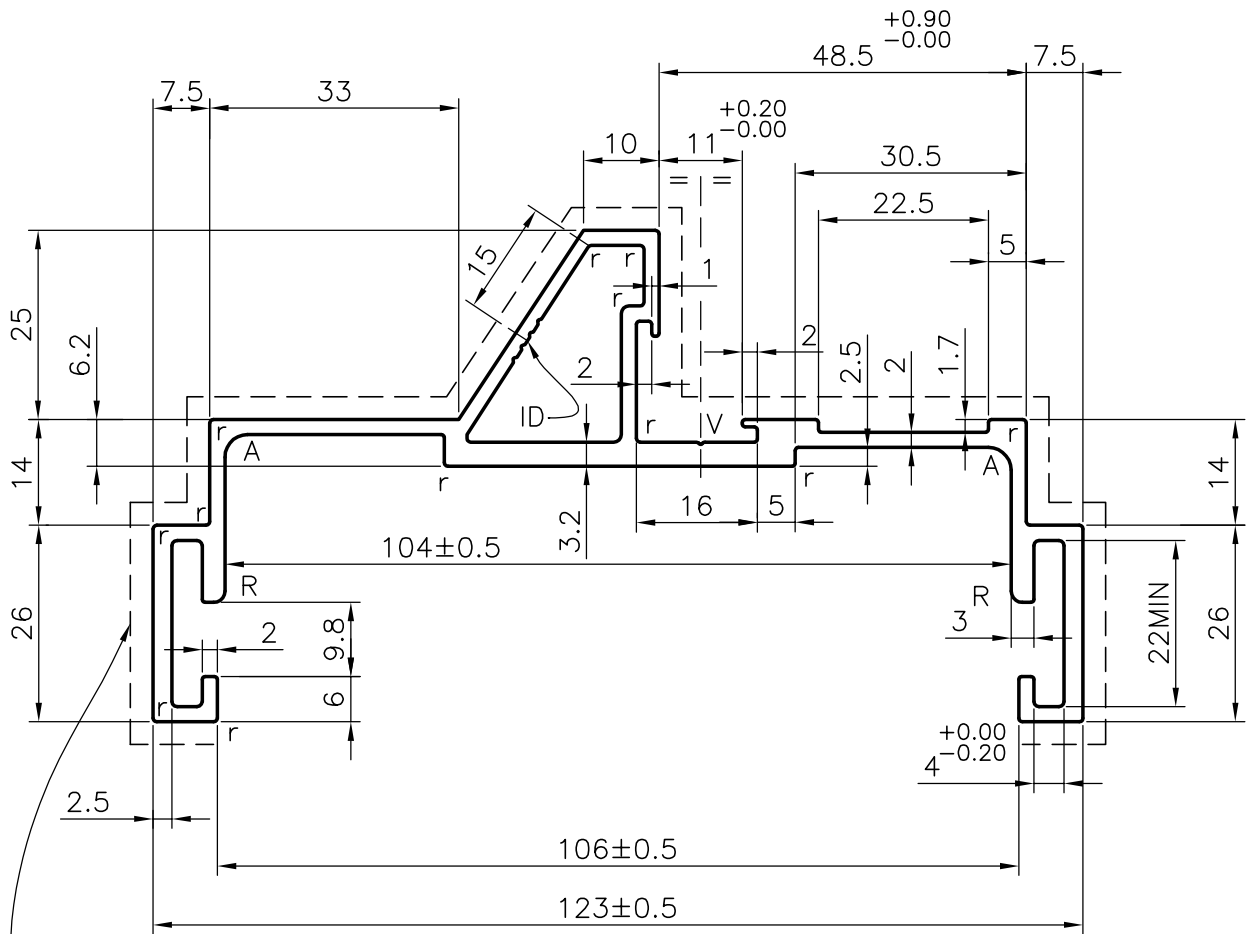
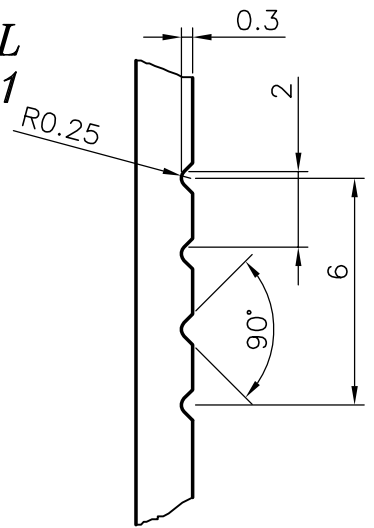
X1119

**ID DETAIL**  
**SCALE 5:1**



GENERAL WALL THICKNESS :- 2 mm.

1. A = 3.00 RADIUS (2)
2. C = 0.70 RADIUS (8)
3. R = 1.50 RADIUS (2)
4. r = 0.50 mm.RADIUS (16)
5. V GROOVES 0.3 DEEP x 90°



EXPOSED SURFACE BETTER FINISH REQUIRED



SYMBOL OF QUALITY  
AN ISO 9001 COMPANY

**JINDAL ALUMINIUM LTD.**  
**BANGALORE-560073 (INDIA)**

	NAME	DATE
DRAWN	RAGHAVENDRA	10-12-2003
CHECKED		
APPROVED		
SCALE		1:1
AREA mm <sup>2</sup>		741.73
PERIMETER mm.		528.79
WEIGHT kg/m		2.003
DRAWING No.	SECTION No.	
P-4575-2	-	
19017	19017	
21027	21027	
X1119	X1119	

1. ALL DIMENSIONS ARE IN mm.
2. ROUND OFF ALL SHARP CORNERS WITH 0.40 mm.
3. TOLERANCES WILL BE AS PER BS: 1474-1987 UNLESS OTHERWISE SPECIFIED

PARTY'S NAME	KOMFORT OFFICE ENVIRONMENTS PLC UNITED KINGDOM
PARTY'S DRAWING No.	AS PER DRAWING (D4/826K/0000/ISSUE-3)
ALLOY & TEMPER	6063 TF
DESCRIPTION	100mm DOOR FRAME