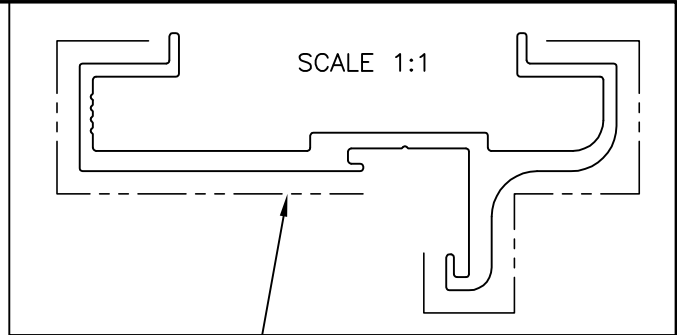
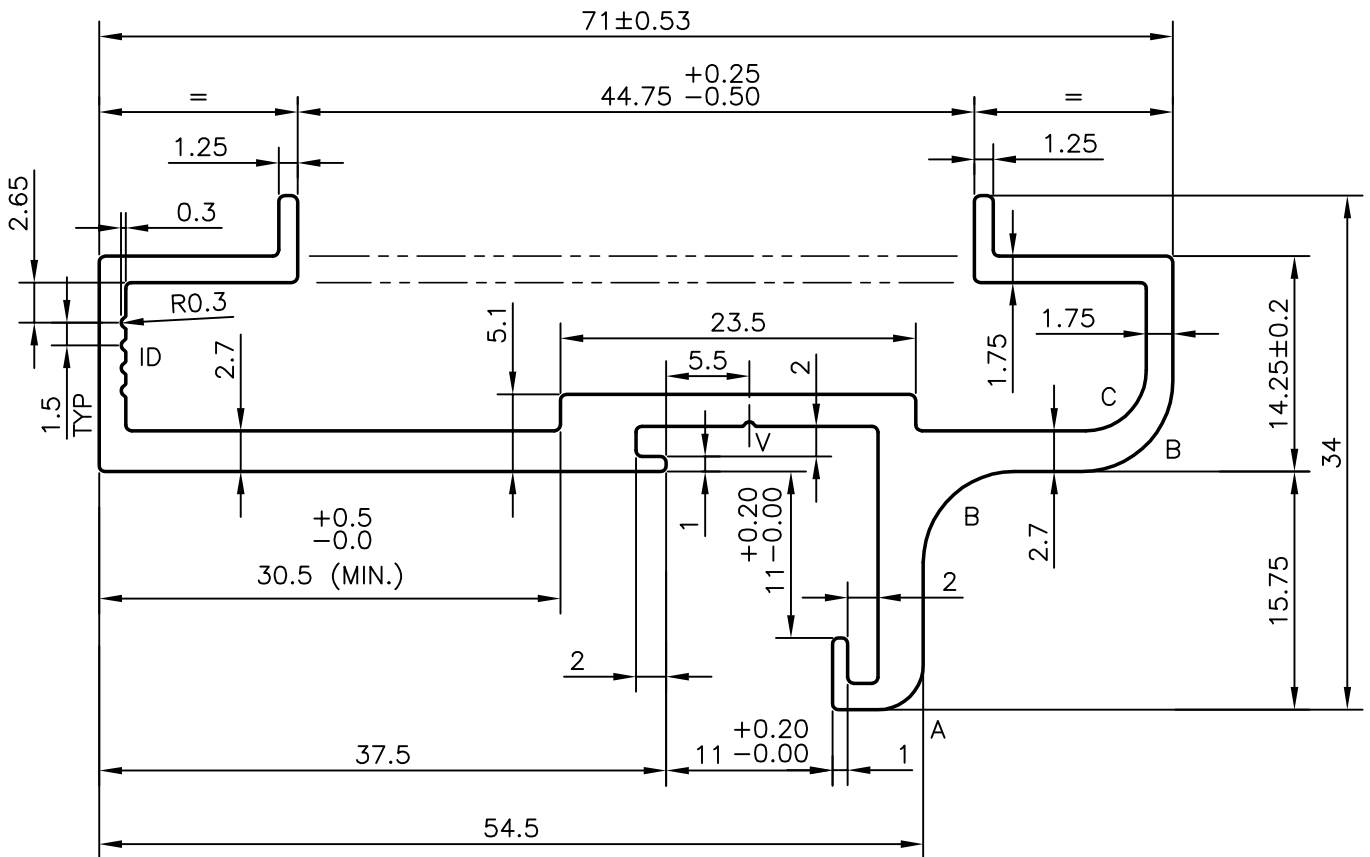



P-6724
21168
X1126



EXPOSED SURFACE
BETTER FINISH REQUIRED



A = 3.00mm RADIUS (1 PLACE)
 B = 6.00mm RADIUS (2 PLACES)
 C = 4.00mm RADIUS (1 PLACE)
 V = VEE GROOVE 0.30x90° (1 PLACE)
 ALL UNSPECIFIED RADIUS TO BE 0.40mm

 SYMBOL OF QUALITY AN ISO 9001 COMPANY	JINDAL ALUMINIUM LTD. BANGALORE-560073 (INDIA)	NAME	DATE
		DRAWN	RAGHAVENDRA 12-10-2006
		CHECKED	
1. ALL DIMENSIONS ARE IN mm. 2. ROUND OFF ALL SHARP CORNERS WITH 0.40 mm. 3. TOLERANCES WILL BE AS PER BS:EN-755 UNLESS OTHERWISE SPECIFIED		SCALE	2:1
		AREA mm ²	348.399
PARTY'S NAME		PERIMETER mm.	301.552
		WEIGHT kg/m	0.941
PARTY'S DRAWING No.		DRAWING No.	SECTION No.
		P-6724	-
ALLOY & TEMPER		21168	21168
		X1126	X1126
DESCRIPTION			
KOMFORT OFFICE ENVIRONMENTS PLC-U.K			
D4/629/0000 ISSUE-2			
6063 TF			
600 ROUNDED DOOR FRAME			