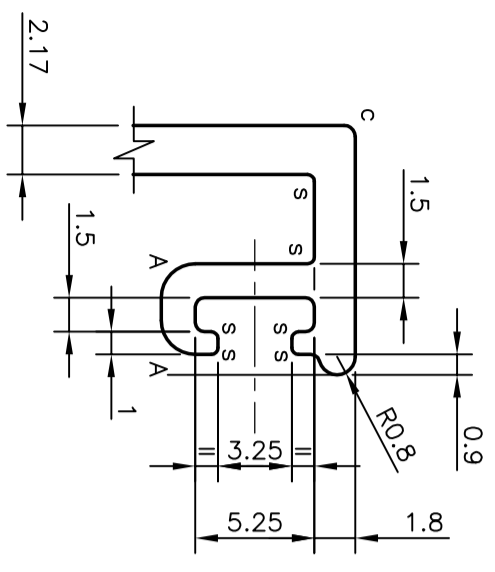
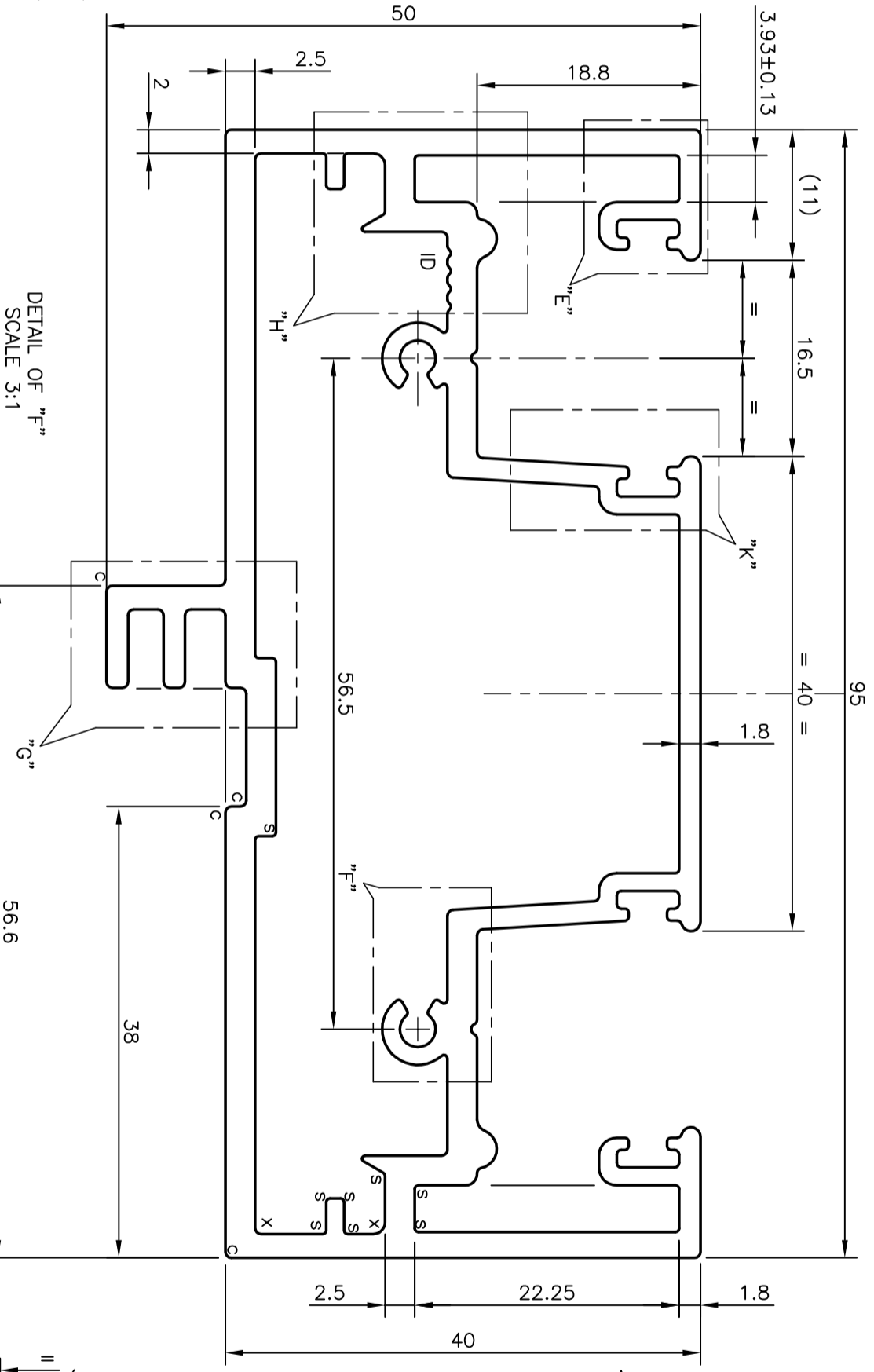
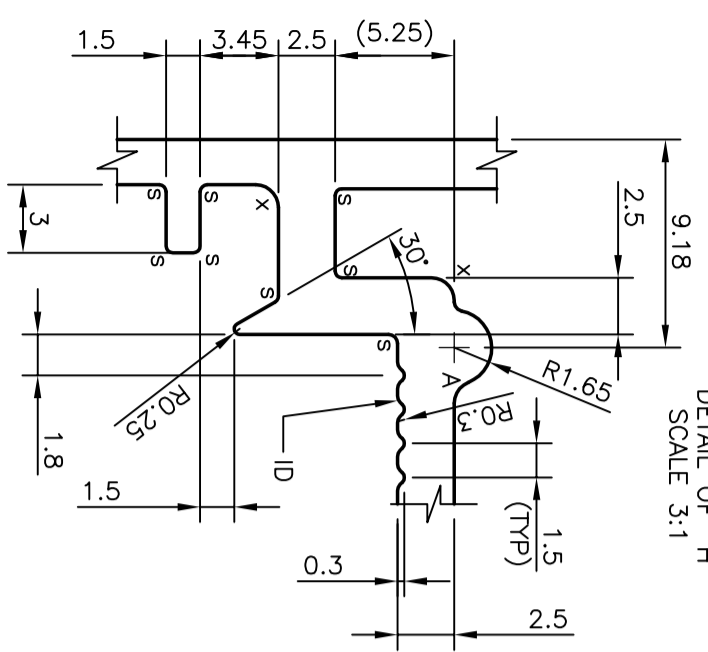


P-7670-1  
22409  
X1147

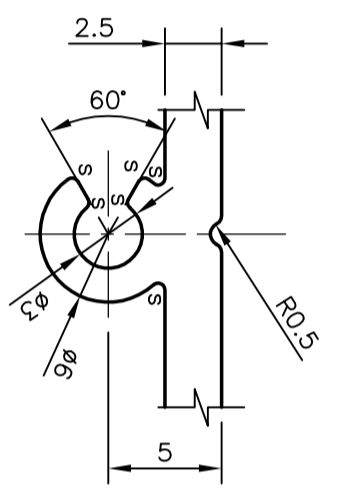
DETAIL OF "E"  
SCALE 3:1



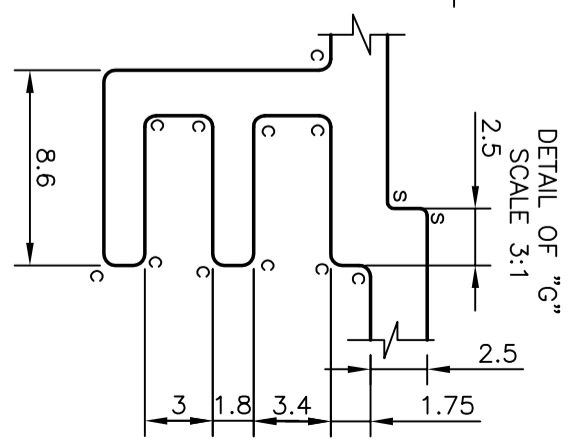
DETAIL OF "H"  
SCALE 3:1



DETAIL OF "F"  
SCALE 3:1

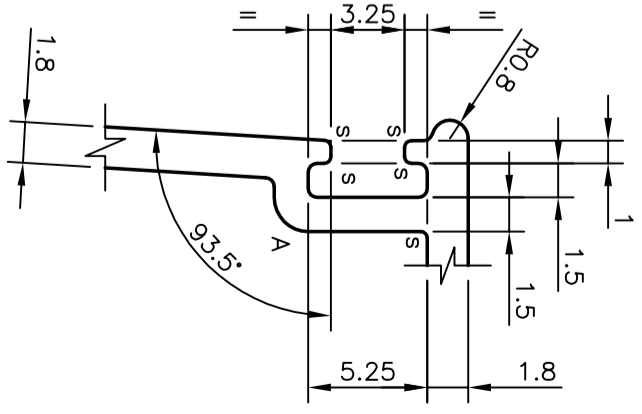


DETAIL OF "K"  
SCALE 3:1

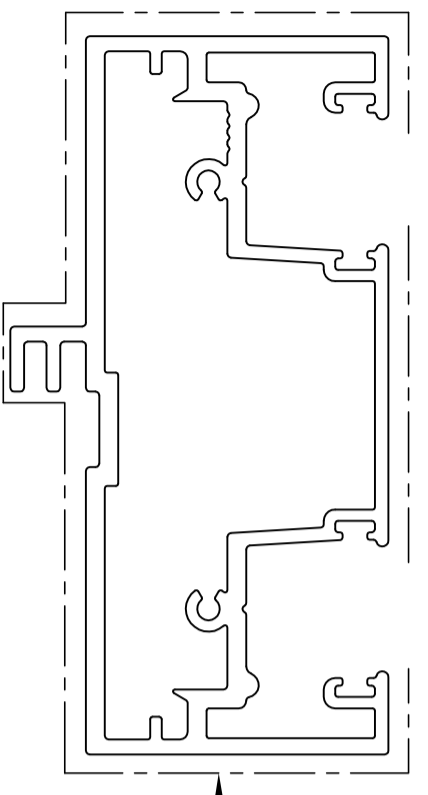


NOTE:-

1. UNSPECIFIED WALL THICKNESS = 1.80 mm
2. A = R1.50 mm (8 PLACES)
3. S = R0.30 mm (54 PLACES)
4. C = R0.50 mm (22 PLACES)
5. X = R1.00 mm (4 PLACES)



EXPOSED FACES



**JINDAL ALUMINIUM LTD.**  
BANGALORE-560073 (INDIA)

SYMBOL OF QUALITY  
AN ISO 9001 COMPANY

1. ALL DIMENSIONS ARE IN mm.
2. ROUND OFF ALL SHARP CORNERS WITH 0.40 mm.
3. TOLERANCES WILL BE AS PER: EN-755 UNLESS OTHERWISE SPECIFIED

PARTY'S NAME	KOMFORT OFFICE ENVIRONMENTS PLC RHIO, U.K	
PARTY'S DRAWING No.	D4-DGP25-ISSUE-2	
ALLOY & TEMPER	6063 T6	
DESCRIPTION	POLAR DG SQUARE DOOR FRAME SECTION	
NAME	J.P. KAUSHIK	DATE
DRAWN		24-11-2007
CHECKED		
APPROVED		
SCALE	2:1	
AREA mm <sup>2</sup>	865.118	
PERIMETER mm.	503.495	
WEIGHT kg/m	2.336	
DRAWING No.	P-7670-1	SECTION No.
	22409	
	X1147	