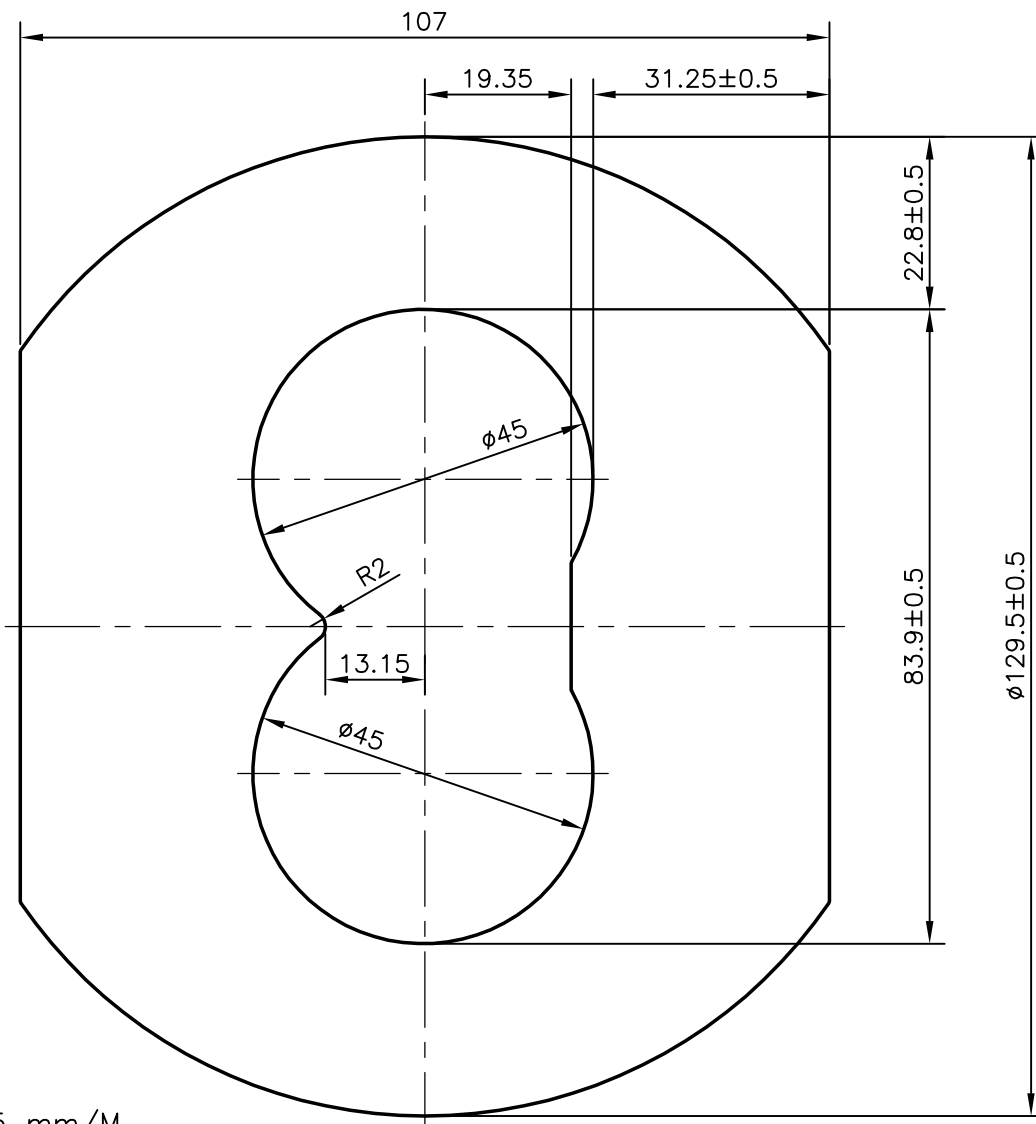


P-9347

X1196



BEND:- 1.5 mm/M  
0.6mm/300 mm

TWIST:- 2 mm/M  
3.5mm/3000 mm



SYMBOL OF QUALITY  
AN ISO 9001 COMPANY

**JINDAL ALUMINIUM LTD.**  
BANGALORE-560073 (INDIA)

	NAME	DATE
DRAWN	PRASANNA.H	26-06-2009
CHECKED		
APPROVED		

1. ALL DIMENSIONS ARE IN mm.
2. ROUND OFF ALL SHARP CORNERS WITH 0.40 mm.
3. TOLERANCES WILL BE AS PER BS:EN-755 UNLESS OTHERWISE SPECIFIED

SCALE	1:1
AREA mm <sup>2</sup>	8909.98
PERIMETER mm.	397.722
WEIGHT kg/m	24.057

PARTY'S NAME	HEMA ENDUSTRI A.S.- TURKEY
PARTY'S DRAWING No.	2P1-3000-350
ALLOY & TEMPER	6351 T6 (HE30 WP)
DESCRIPTION	PUMP BODY SECTION

DRAWING No.	SECTION No.
P-9347	-
X1196	X1196