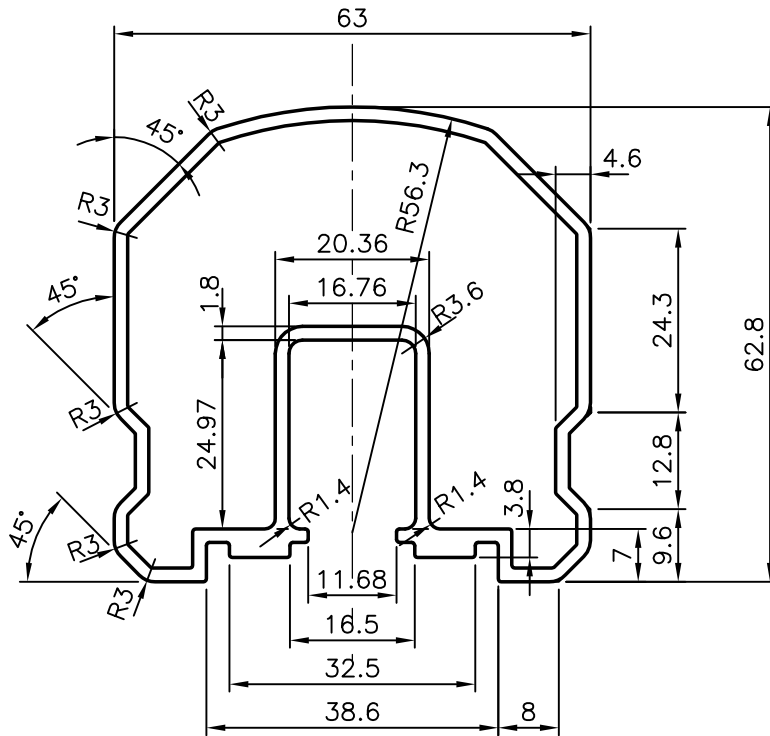


P-9452-1

X1202

-



GENERAL WALL THICKNESS:- 1.8 mm.



SYMBOL OF QUALITY  
AN ISO 9001 COMPANY

**JINDAL ALUMINIUM LTD.**  
BANGALORE-560073 (INDIA)

	NAME	DATE
DRAWN	J.P.KAUSHIK	02-09-2009
CHECKED		
APPROVED		

1. ALL DIMENSIONS ARE IN mm.
2. ROUND OFF ALL SHARP CORNERS WITH 0.4mm.
3. TOLERANCES WILL BE AS PER BS:EN-755 UNLESS OTHERWISE SPECIFIED

SCALE	1:1
AREA mm <sup>2</sup>	556.019
PERIMETER mm.	305.835
WEIGHT kg/m	1.501

PARTY'S NAME	PROSOURCE INDUSTRIAL SOLUTIONS INC.
PARTY'S DRAWING No.	AS PER SAMPLE & CUSTOMER REQUIREMENT
ALLOY & TEMPER	6063 T6
DESCRIPTION	HAND RAIL SECTION

DRAWING No.	SECTION No.
P-9452-1	-
X1202	X1202
-	-