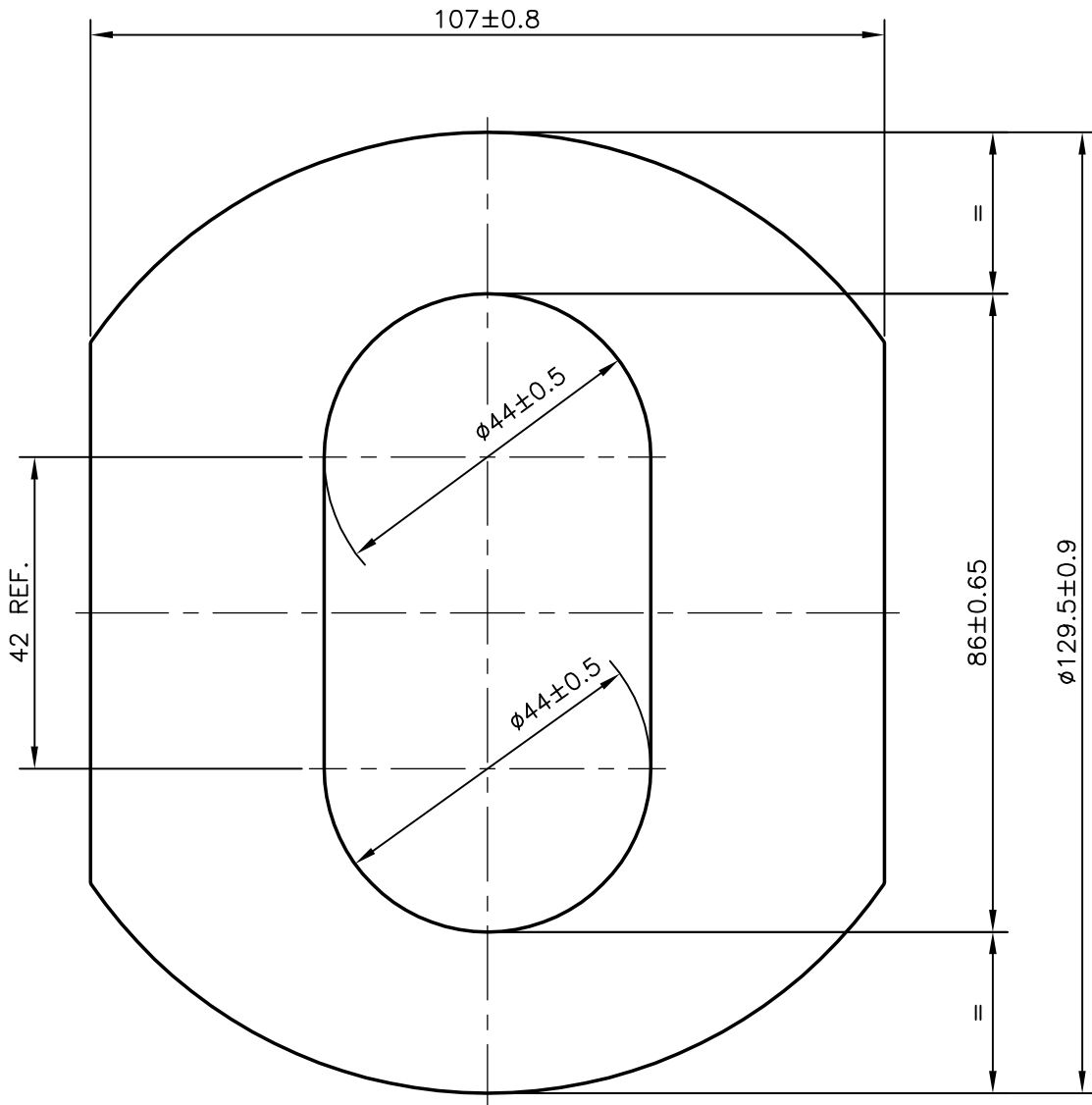


P-9887

X1318



BEND:- 1.5 mm/M
0.6mm/300 mm

TWIST:- 2 mm/M
3.5mm/3000 mm



SYMBOL OF QUALITY
AN ISO 9001 COMPANY

JINDAL ALUMINIUM LTD.
BANGALORE-560073 (INDIA)

	NAME	DATE
DRAWN	J.P.KAUSHIK	13-03-2010
CHECKED		
APPROVED	S.S.GARG	26-06-2010

1. ALL DIMENSIONS ARE IN mm.
2. ROUND OFF ALL SHARP CORNERS WITH 0.40 mm.
3. TOLERANCES WILL BE AS PER BS:EN-755, UNLESS OTHERWISE SPECIFIED

SCALE	1:1
AREA mm ²	8688.038
PERIMETER mm.	397.722
WEIGHT kg/m	23.458

PARTY'S NAME HEMA ENDUSTRI A.S.- TURKEY

PARTY'S DRAWING No. 1.5PH-3000-004

ALLOY & TEMPER HE30 TF

DESCRIPTION PUMP BODY SECTION

DRAWING No.	SECTION No.
P-9887	-
X1318	X1318