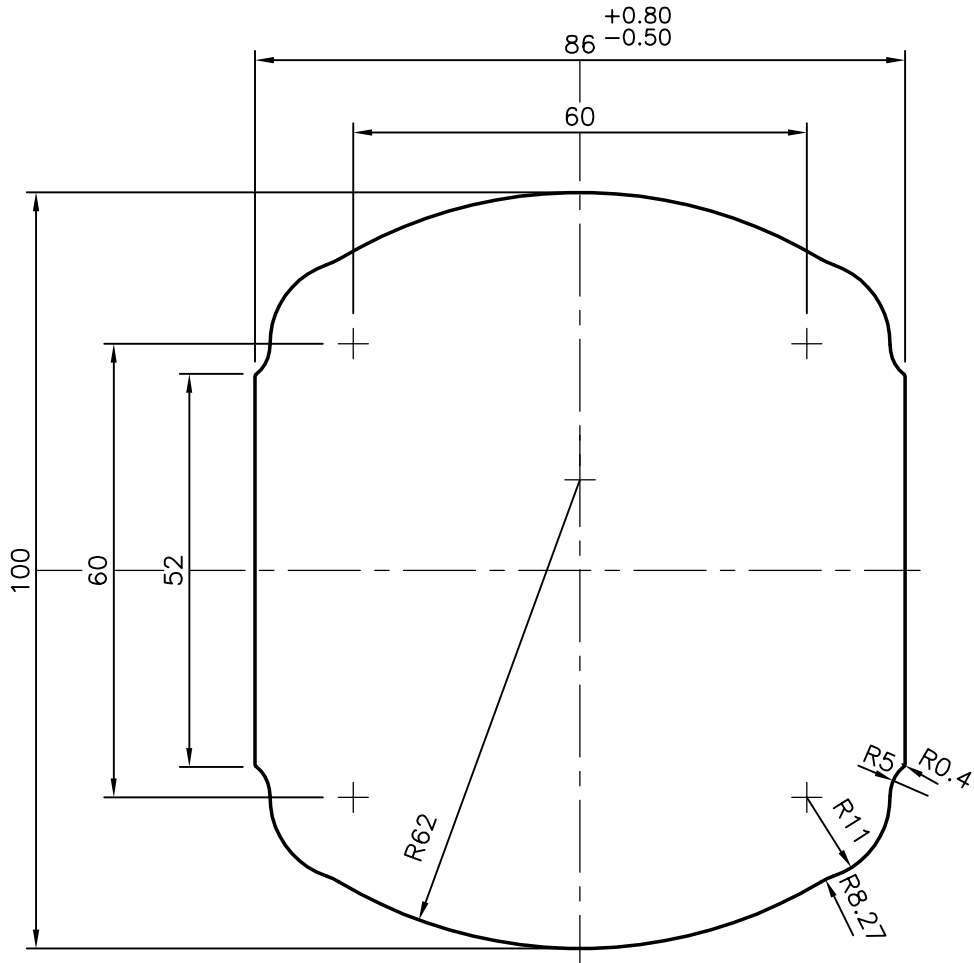


P-9888

X1319



BEND:- 1.5 mm/M
0.6mm/300 mm

TWIST:- 2 mm/M
3.5mm/3000 mm



SYMBOL OF QUALITY
AN ISO 9001 COMPANY

JINDAL ALUMINIUM LTD.
BANGALORE-560073 (INDIA)

	NAME	DATE
DRAWN	J.P.KAUSHIK	13-03-2010
CHECKED		
APPROVED	S.S.GARG	26-06-2010
SCALE		1:1
AREA mm ²		7621.188
PERIMETER mm.		318.394
WEIGHT kg/m		20.577
DRAWING No.	SECTION No.	
P-9888	-	
X1319	X1319	

1. ALL DIMENSIONS ARE IN mm.
2. ROUND OFF ALL SHARP CORNERS WITH 0.40 mm.
3. TOLERANCES WILL BE AS PER BS:EN-755, UNLESS OTHERWISE SPECIFIED

PARTY'S NAME	HEMA ENDUSTRI A.S.- TURKEY
PARTY'S DRAWING No.	1PN-100-234
ALLOY & TEMPER	HE30 TF
DESCRIPTION	PUMP BODY