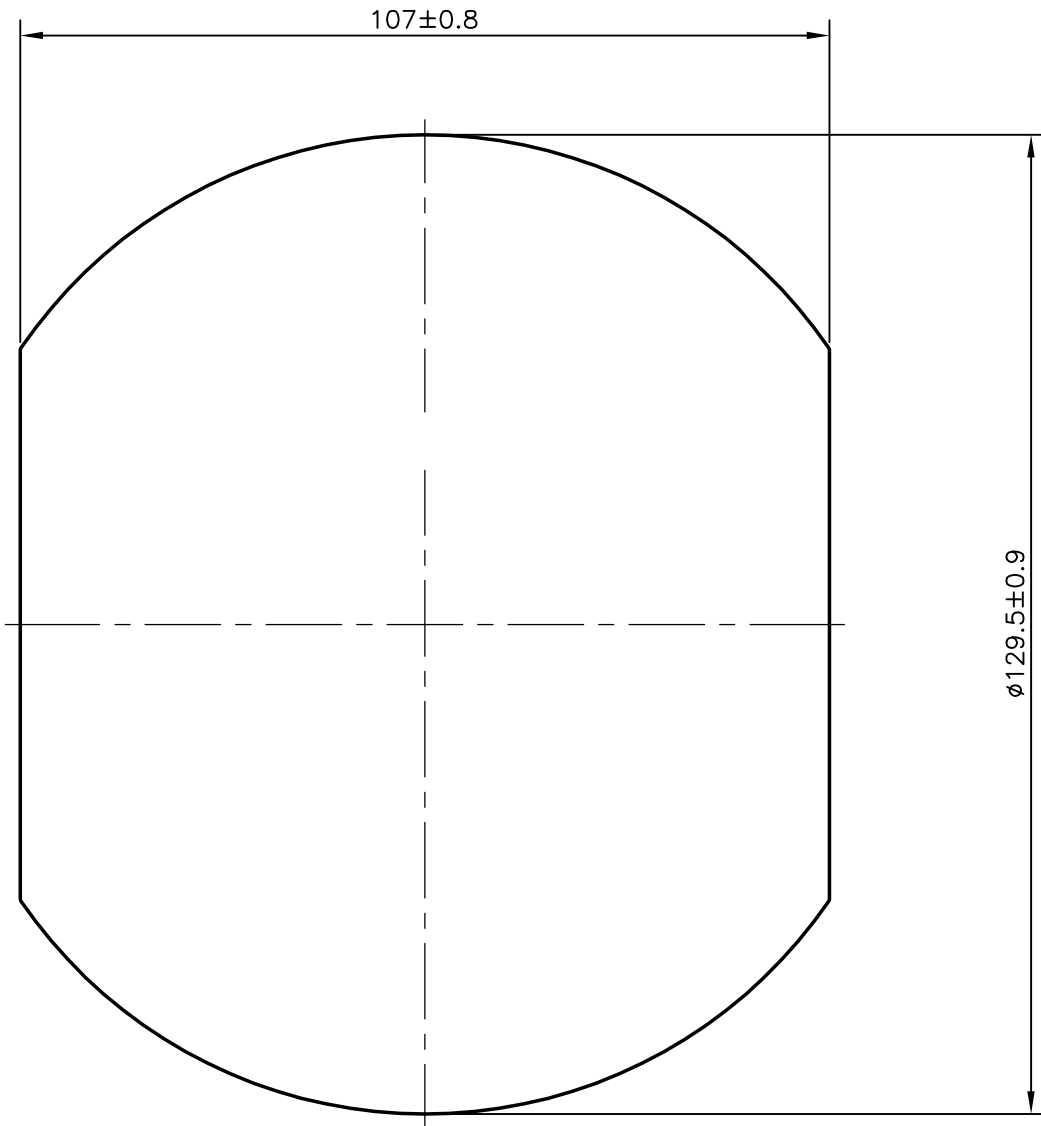


P-9889

X1320



BEND:- 1.5 mm/M  
0.6mm/300 mm

TWIST:- 2 mm/M  
3.5mm/3000 mm



SYMBOL OF QUALITY  
AN ISO 9001 COMPANY

**JINDAL ALUMINIUM LTD.**  
**BANGALORE-560073 (INDIA)**

	NAME	DATE
DRAWN	J.P.KAUSHIK	13-03-2010
CHECKED		
APPROVED	S.S.GARG	26-06-2010

1. ALL DIMENSIONS ARE IN mm.
2. ROUND OFF ALL SHARP CORNERS WITH 0.40 mm.
3. TOLERANCES WILL BE AS PER BS:EN-755, UNLESS OTHERWISE SPECIFIED

SCALE	1:1
AREA mm <sup>2</sup>	12056.569
PERIMETER mm.	397.722
WEIGHT kg/m	32.553

PARTY'S NAME	HEMA ENDUSTRI A.S.- TURKEY	DRAWING No.	P-9889	SECTION No.	-
PARTY'S DRAWING No.	2P1-3000-351		X1320		X1320
ALLOY & TEMPER	HE30 TF				
DESCRIPTION	PUMP BODY SECTION				