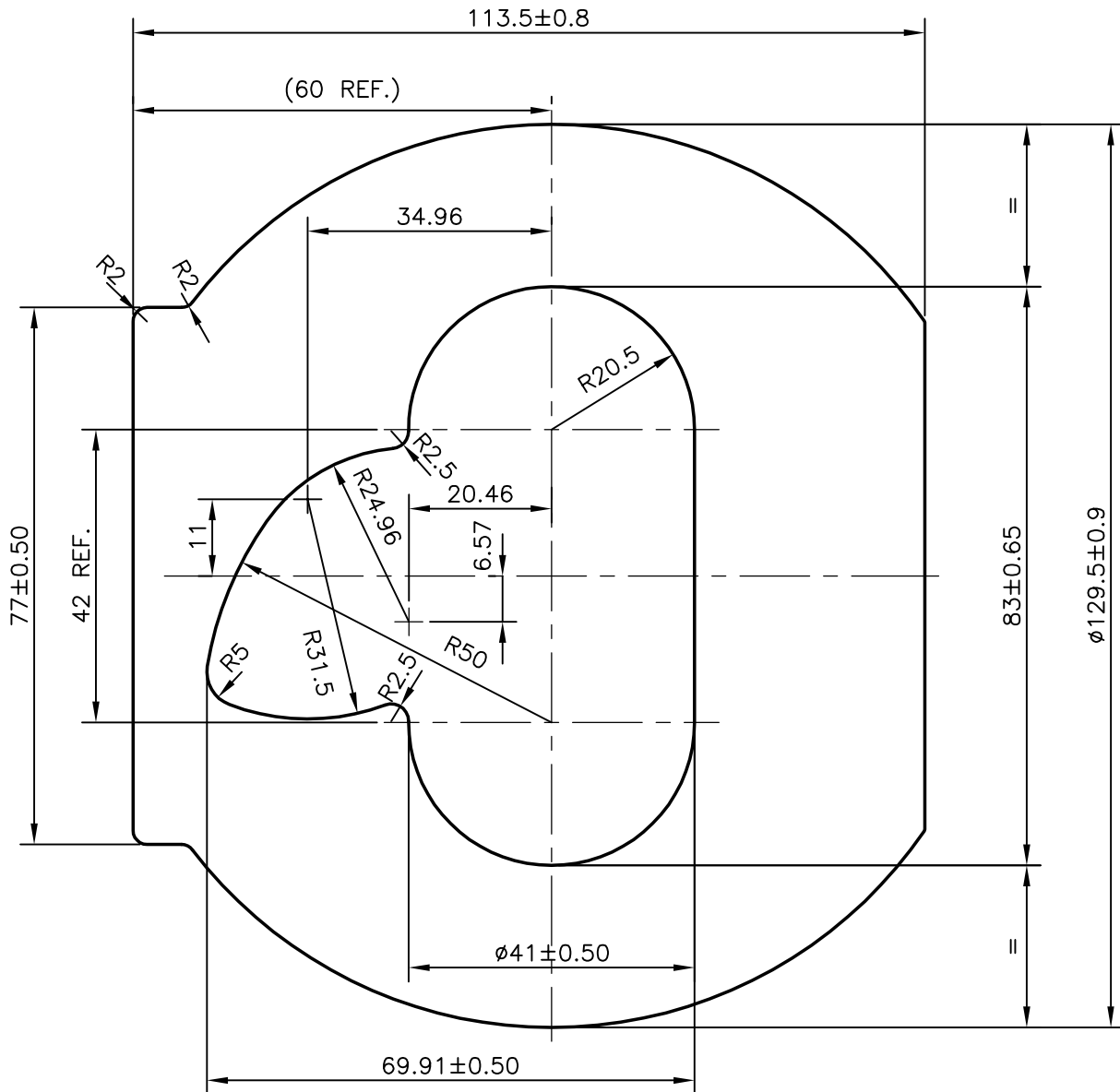


P-9896

X1321



BEND:- 1.5 mm/M
 0.6mm/300 mm
 TWIST:- 2 mm/M
 3.5mm/3000 mm



SYMBOL OF QUALITY
 AN ISO 9001 COMPANY

JINDAL ALUMINIUM LTD.
 BANGALORE-560073 (INDIA)

	NAME	DATE
DRAWN	J.P.KAUSHIK	17-03-2010
CHECKED		
APPROVED	S.S.GARG	26-06-2010
SCALE		1:1
AREA mm ²		8647.794
PERIMETER mm.		410.691
WEIGHT kg/m		23.349

1. ALL DIMENSIONS ARE IN mm.
2. ROUND OFF ALL SHARP CORNERS WITH 0.40 mm.
3. TOLERANCES WILL BE AS PER BS:EN-755 UNLESS OTHERWISE SPECIFIED

PARTY'S NAME	HEMA ENDUSTRI A.S.- TURKEY	DRAWING No.	P-9896	SECTION No.	-
PARTY'S DRAWING No.	1.5PH-3000051		X1321		X1321
ALLOY & TEMPER	6082 T6 (HE30 TF)				
DESCRIPTION	PUMP BODY SECTION				