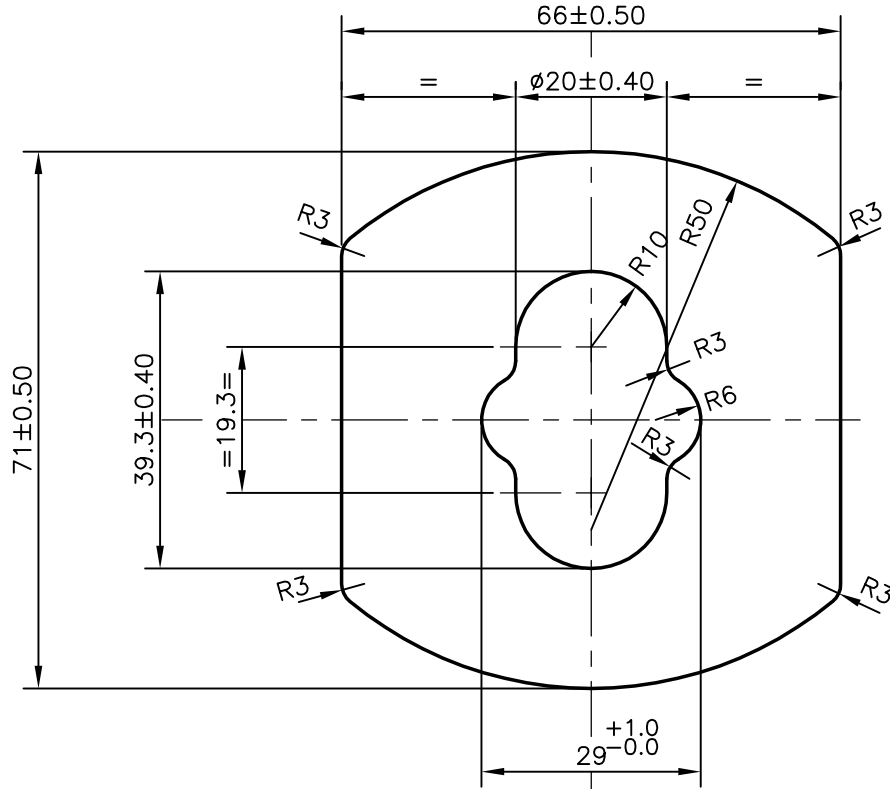


P-9897

X1322



BEND:- 1.5 mm/M
 0.6mm/300 mm
 TWIST:- 2 mm/M
 3.5mm/3000 mm



SYMBOL OF QUALITY
 AN ISO 9001 COMPANY

JINDAL ALUMINIUM LTD.
 BANGALORE-560073 (INDIA)

	NAME	DATE
DRAWN	J.P.KAUSHIK	16-03-2010
CHECKED		
APPROVED	S.S.GARG	29-06-2010

1. ALL DIMENSIONS ARE IN mm.
2. ROUND OFF ALL SHARP CORNERS WITH 0.40 mm.
3. TOLERANCES WILL BE AS PER BS:EN-755 UNLESS OTHERWISE SPECIFIED

SCALE	1:1
AREA mm ²	3388.116
PERIMETER mm.	235.72
WEIGHT kg/m	9.148

PARTY'S NAME	HEMA ENDUSTRI A.S.- TURKEY
PARTY'S DRAWING No.	0.5P-100-004
ALLOY & TEMPER	6082 T6 (HE30 TF)
DESCRIPTION	PUMP BODY SECTION

DRAWING No.	SECTION No.
P-9897	-
X1322	X1322