

P-10667

X1454

127

121.41

26.67(REF.)

10.54, 11.43

76.71(REF.)

R6.35

26.51

23.27

2.03 TYP

11.43

1.91

2.29

7.24

20.78

28.5

8.64

4.06

6.35

2.03

7.37

18.54

146.05

143.51

"A"

"B"

"C"

R1.52

R1.52

R3.05

R3.96

R3.05

R1.52

R3.96

R3.05

R1.52

R3.96

R3.05

R1.52

R3.96

R3.05

R1.52

R3.96

R3.05

R1.52

R3.96

R3.05

R1.52

R3.96

R3.05

R1.52

R3.96

DETAIL OF "B"
SCALE 3:1

11.68

9.78

5.97

1.91

11.43

7.11

1.91

11.43

7.11

1.91

11.43

7.11

1.91

11.43

7.11

1.91

11.43

7.11

1.91

11.43

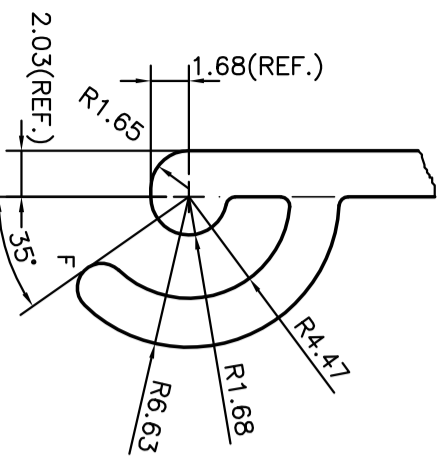
7.11

1.91

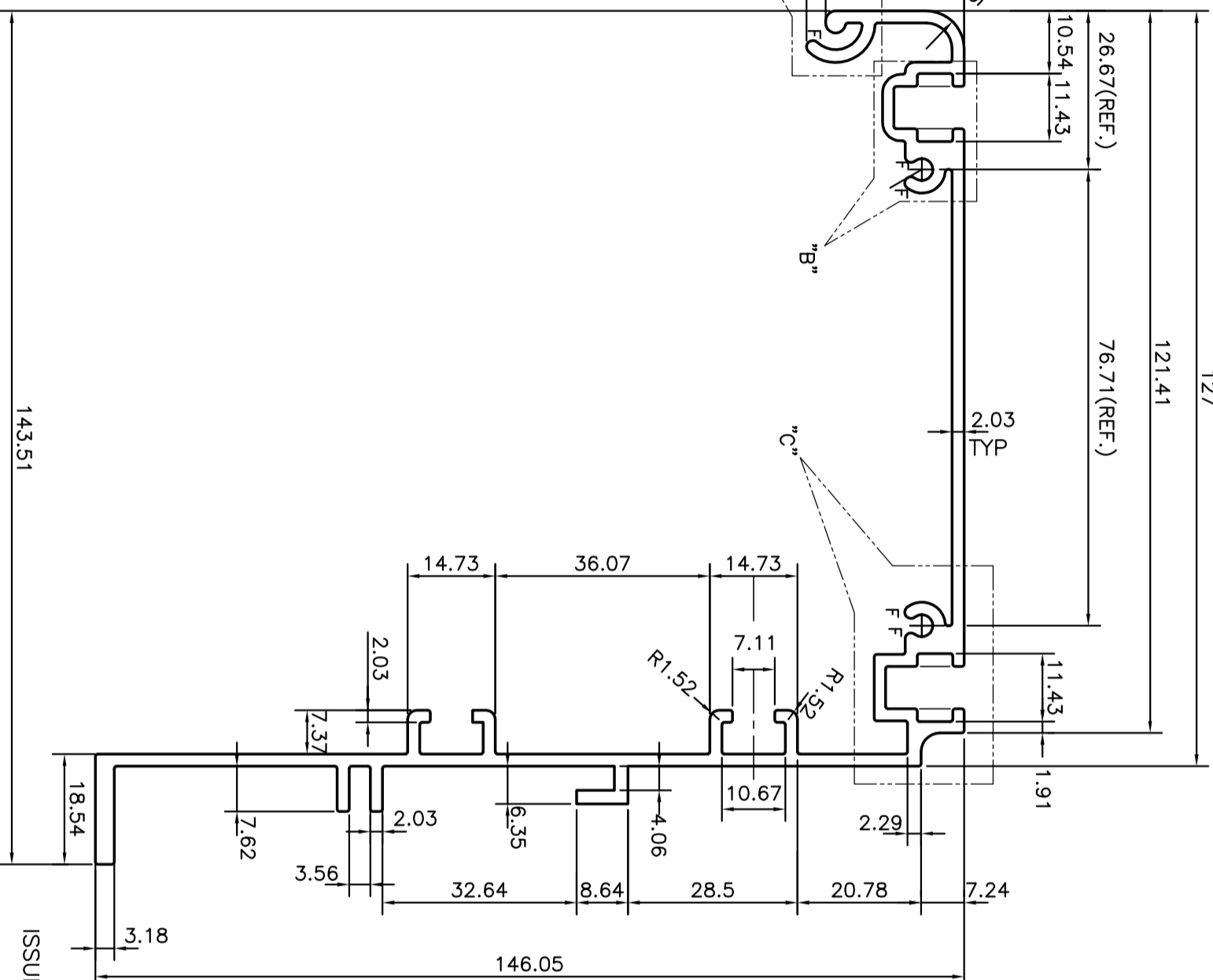
11.43

7.11

1.91

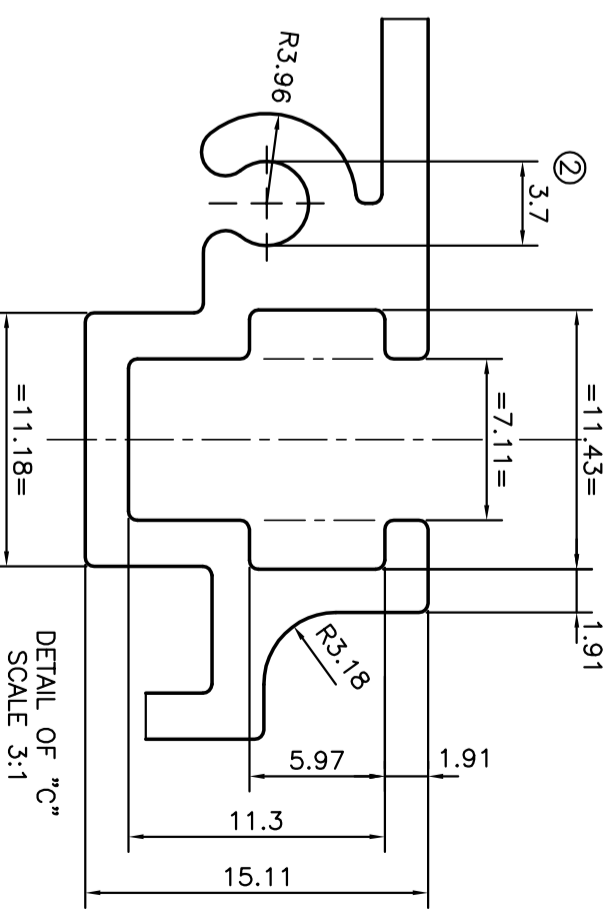


DETAIL OF "A"
SCALE 3:1

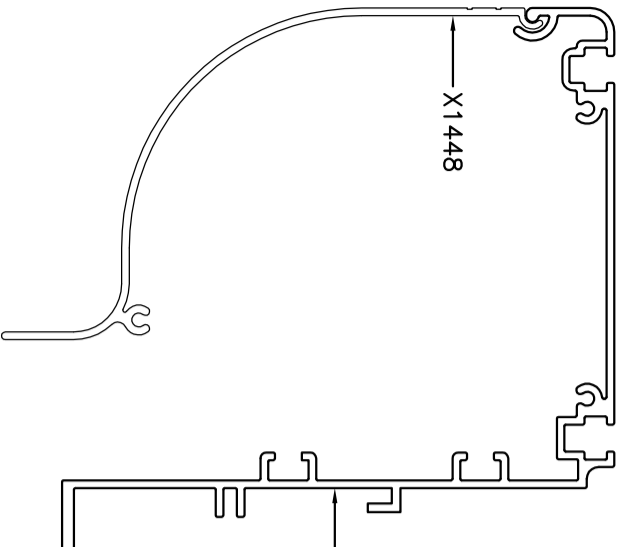


ISSUE-2

F = FULL RADIUS (5 PLACES)
 UNSPECIFIED WALL THICKNESS 2.03 mm
 SCREW BOX SIZE I D CHANGED FROM ϕ 3.96 TO ϕ 3.70 mm
 WEIGHT ALSO CHANGED FROM 2.595 kg/M TO 2.602 kg/M



DETAIL OF "C"
SCALE 3:1



X1454 (ISSUE-2)



SYMBOL OF QUALITY
AN ISO 9001 COMPANY

JINDAL ALUMINIUM LTD.
 BANGALORE-560073 (INDIA)

1. ALL DIMENSIONS ARE IN mm.
2. ROUND OFF ALL SHARP CORNERS WITH 0.40 mm.
3. TOLERANCES WILL BE AS PER BS:EN-755-9 UNLESS OTHERWISE SPECIFIED

PARTY'S NAME	DA-LITE SCREEN COMPANY, INC USA.	NAME	J.P. KAUSHIK	DATE	28-02-2012
PARTY'S DRAWING No.	89315	CHECKED		APPROVED	S.S. GARG
ALLOY & TEMPER	6063 T6	SCALE	1:1	AREA	963.585
DESCRIPTION	MISC. SECTION	PERIMETER	884.78	WEIGHT	2.602
		DRAWING No.	P-10667	SECTION No.	
			X1454		X1454(ISSUE-2)