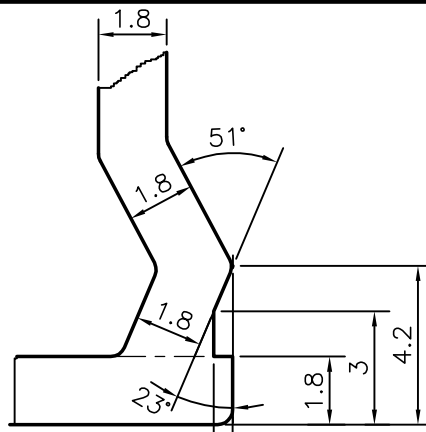
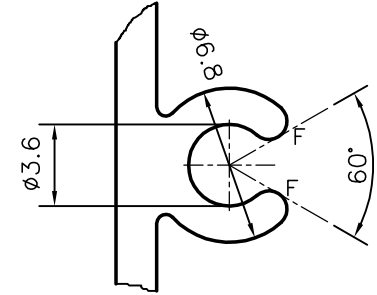


P-10772-1

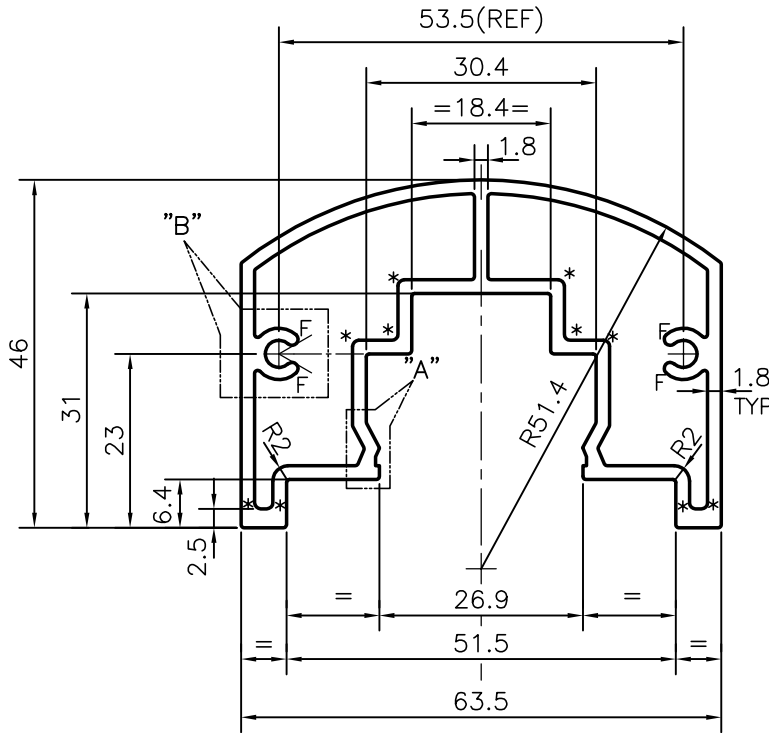
X1479



DETAIL OF "A"  
SCALE 5:1



DETAIL OF "B"  
SCALE 3:1



ISSUE-3 :-

SHAPE CHANGED & SCREW BOX ADDED

\* = 0.8 RADIUS (10 PLACES )

F = FULL RADIUS (4 PLACES )



SYMBOL OF QUALITY  
AN ISO 9001 COMPANY

**JINDAL ALUMINIUM LTD.**  
BANGALORE-560073 (INDIA)

	NAME	DATE
DRAWN	J.P.KAUSHIK	21-02-2011
CHECKED		
APPROVED	S.S.GARG	25-02-2011
SCALE		1:1
AREA mm <sup>2</sup>		538.002
PERIMETER mm.		267.057
WEIGHT kg/m		1.453
DRAWING No.	SECTION No.	
P-10772-1	-	
X1479	X1479(ISSUE-3)	

1. ALL DIMENSIONS ARE IN mm.
2. ROUND OFF ALL SHARP CORNERS WITH 0.40 mm.
3. TOLERANCES WILL BE AS PER, BS:EN-755-9 UNLESS OTHERWISE SPECIFIED

PARTY'S NAME	PROSOURCE INDL. SOLUTIONS, CANADA
PARTY'S DRAWING No.	AS PER DRAWING
ALLOY & TEMPER	6063 T5
DESCRIPTION	HAND RAIL SECTION