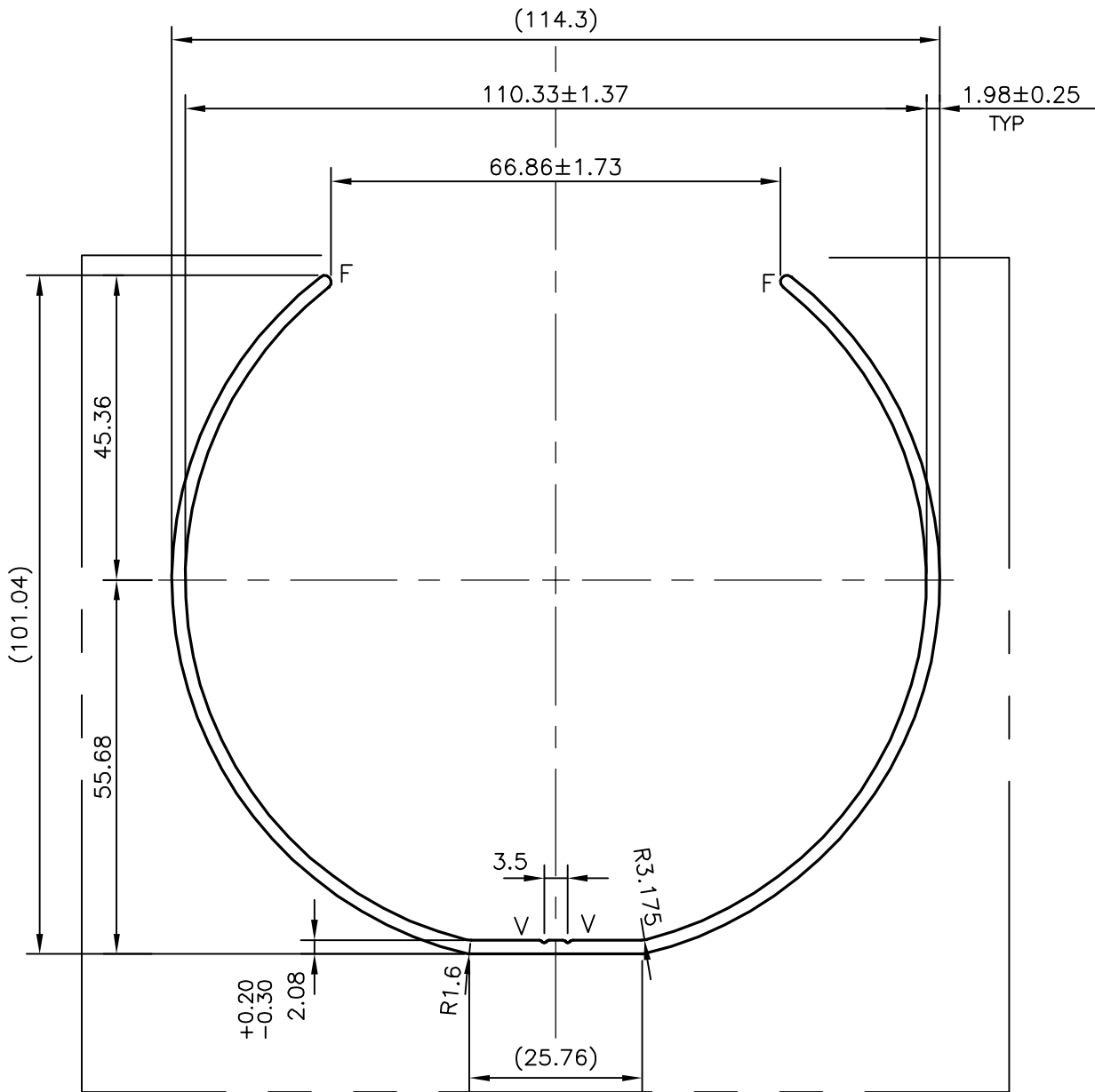


P-10968

X1543



EXPOSED SURFACE

F = FULL RADIUS (2 PLACES)
V = V GROOVE 0.4x90° (2 PLACES)



SYMBOL OF QUALITY
AN ISO 9001 COMPANY

JINDAL ALUMINIUM LTD.
BANGALORE-560073 (INDIA)

	NAME	DATE
DRAWN	J.P.KAUSHIK	19-05-2011
CHECKED		
APPROVED	S.S.GARG	22-07-2011
SCALE		1:1
AREA mm ²		557.796
PERIMETER mm.		563.741
WEIGHT kg/m		1.506
DRAWING No.	SECTION No.	
P-10968	-	
X1543	X1543	

1. ALL DIMENSIONS ARE IN mm.
2. ROUND OFF ALL SHARP CORNERS WITH 0.40 mm.
3. TOLERANCES WILL BE AS PER, ANSI:H35.2-2009 UNLESS OTHERWISE SPECIFIED

PARTY'S NAME	ON THE HOOK USA
PARTY'S DRAWING No.	AS PER DRAWING
ALLOY & TEMPER	6063 T6
DESCRIPTION	MISC. SECTION